

OPTIONS

Door/Drawer Handles

Several different styles of door/drawer handles that are offered to suit specific customer requirements. Please use the option numbers below to specify the handle of your choice.

Option Code	Description
16	Ship handles not installed
18	Horizontally mounted handles
29	Other customer specified hinge**
69	Other customer specified handle**
6A	Recessed stainless steel tapered pull

Notes: *Available at an additional charge

**Provide complete specification and source for all special options ordered.



OPTION 62 (Standard)
4" Brushed Aluminum Pull



OPTION 60
4" Black Nylon Pull



*OPTION 61
4" Stainless Steel Wire Pull
OPTION 68
4" Aluminum Wire Pull



OPTION 63
4" Chrome Pull



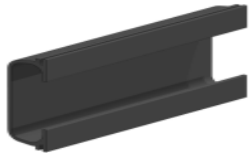
OPTION 64
5" Black Flush ABS Pull
64B Beige, 64G Gray,
64W White



OPTION 65
4" Flush Aluminum Pull
For Sliding Doors



OPTION 65
4" Flush Aluminum Pull
For Doors and Drawers



OPTION 66
4" Black Flush PVC Pull
For Sliding Doors



OPTION 66
4" Black Flush PVC Pull
For Doors and Drawers



*OPTION 67
Flush Full Width Pull

Door Hinges

Mott cabinets come with durable 14 gauge, five knuckle hinges. Hinges are available in black powder coat, chrome plated or stainless steel finishes. Please use the option numbers below to specify the hinge of your choice.



OPTION 21 (Standard) Chrome Hinge
OPTION 22 Black Hinge
*OPTION 23 Stainless Steel Hinge



*OPTION 20
Dull Chrome Overlay Hinge
*OPTION 24
Stainless Steel Overlay Hinge

*Available at an additional charge

Drawer Body & Suspension

Drawer bodies are one piece, full access and reinforced. Drawer fronts include sound deadening material. Drawers are available in powder coated cold rolled steel or stainless steel.

Standard drawer suspension is 100 lbs with 3/4 extension runners, optional suspension systems are available. Nylon tire suspended drawers are self closing during the last 6" of travel for effortless use and reliable safety.

Option Code	Description
00	Modified door/drawer configuration
50	304 stainless steel drawer bodies on powder coated steel cabinet
01	Full extension drawer runners
26	200lb full extension drawer runners
F26	File drawer with 200lb full extension drawer runners
I01	Full extension drawer runners with interlock
I26	200lb full extension drawer runners with interlock
S01	Full extension soft close drawer runners
S26	200 lb full extension soft close drawer runners
59	Customer specified drawer runners (customer details required)