

heavy duty ergonomic strength

The Harvard Series fume hood is designed with enhanced standard features such as a heavy duty steel frame that adds strength to the hood structure. This hood has ergonomically angled front posts that point the service handles and electrical outlets towards the operator. A glass by-pass panel is standard in order to provide full sight lines within the hood. Also standard are high-performance stainless steel airfoils and durable chain and sprocket sash systems. The hood is ideally suited for use with VAV exhaust systems.



heavy duty

Face Velocities

Designed for 80-100 fpm face velocity. Tested to ASHRAE 110 guidelines.

Sash Counterbalance System

Chain and sprocket sash delivers the smoothest and most reliable operation available and has an exceptionally long life span.

Full Viewing Sash with Bypass View Panel

Provides a clear and unobstructed side to side view of fume hood interior, with a 41" high viewing area.

Lower Airfoil

The stainless steel lower airfoil ensures optimum airflow and delivers unequaled durability and style.

Chemical Resistant Liner

Standard fiberglass reinforced polyester liner has excellent strength and chemical resistance; additional liner materials are also available.

Angled Service Posts

Stylish ergonomic positioning for plumbing and electrical fixtures.

Electrical Services

Two UL approved duplex receptacles are provided for 120 volt service. UL approved fluorescent light fixture mounted outside the fume chamber provides increased safety, longer life and easy maintenance. This fume hood is UL 1805 Classified.

Duct Collar

Bell shaped Type 316 stainless steel collar easily and directly interfaces with the building ventilation system.

Plumbing Services

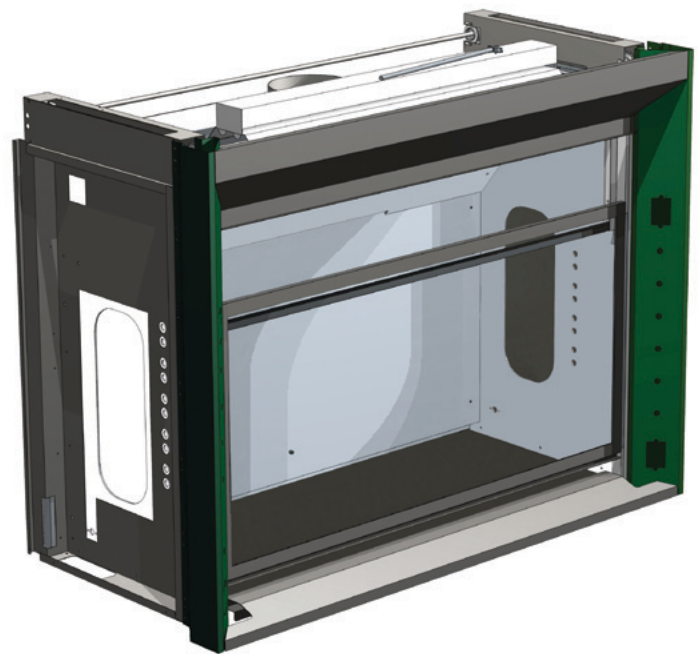
Front post is pre-punched to accept six plumbing fixtures per side. Factory pre-plumbing of front-loaded remote fixtures is an available option.

Hood Types

Our hoods come in a variety of types designed for specific applications and can be made to match your specific size requirements in height and depth. These types include: bench, floor mounted, ADA, distillation, teaching and double sided.

Hood Options

- Automatic Sash Closing System
- Self-lowering Sash System
- Stainless Steel Construction
- Sash Configurations
- VAV or CAV
- ADA Setup



Chain and sprocket sash



Bypass view panel