

# high performance energy savings

The RFV2 (Reduced Face Velocity) Series hood is designed for high performance and energy efficiency. It has been tested to standard and modified ASHRAE procedures at face velocities as low as 50 fpm. The unique baffle system, performance sash handle and downwardly vectored airflow provide safe containment at low face velocity without using mechanical baffle systems or fans. Other features include a flush containment sill, and a reliable self-lowering chain and sprocket sash system.



# high performance

## Face Velocities

Designed for 50-80 fpm face velocity. Tested to ASHRAE 110 Guidelines.

## Downwardly Vected Upper By-Pass

Prevents contaminated air build up behind the open sash. Supplementary mechanical fans or moveable baffles not required.

## Self-lowering Sash System

Sash latch temporarily secures the sash in the full open position for setup equipment. When the latch is freed, the sash automatically returns to the operational position for energy conservation and safety.

## Sash Counterbalance System

Chain and sprocket sash system delivers the smoothest and most reliable operation available and has an exceptionally long life span.

## Full Viewing Sash

Provides a clear and unobstructed side to side view of fume hood interior, with a 34" high viewing area.

## Low Profile Hinged Airfoil

Flush with the work surface to provide easy access to the hood interior. Spill trough is designed to provide secondary containment in the event a spill escapes the primary containment worktop. Air foil is hinged for easy cleaning.

## Chemical Resistant Liner

Standard fiberglass reinforced polyester liner has excellent strength and chemical resistance; additional liner materials are also available.

## Duct Collar

Rectangular Type 316 stainless steel collar with optional transition to easily interface with the building ventilation system.

## Electrical Services

Two UL approved duplex receptacles are provided for 120 volt service. UL approved fluorescent light fixture mounted outside the fume chamber provides increased safety, longer life and easy maintenance. This fume hood is UL 1805 Classified.

## Plumbing Services

Front posts are pre-punched to accept four plumbing fixtures per side. Factory pre-plumbing of front-loaded or rod-driven remote fixtures is an available option.

## Hood Options

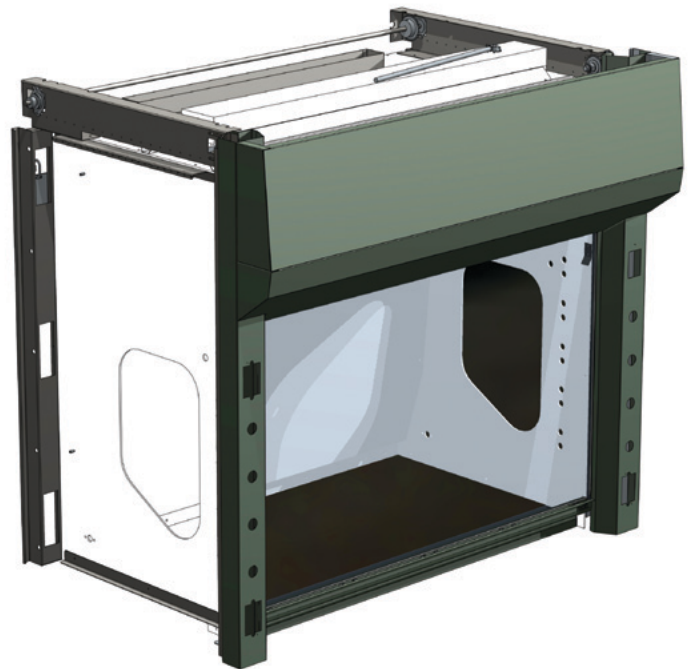
- Automatic Sash Closing System
- Stainless Steel Construction
- Sash Configurations
- VAV or CAV
- ADA Setup



Low profile hinged airfoil



Performance sash handle



RFV2™ is trademarked and produced by Mott Manufacturing