

Table Systems

Tables are an excellent way to create a flexible furniture system. The Cambridge Series table system features several workstation styles, all constructed of heavy-duty welded steel. Workstations are available as stationary or mobile assemblies, as well as fixed or adjustable in height. The table system can be integrated into our furniture system or used as freestanding units. Cabinets, shelving, keyboard trays, outlets, and other accessories can be added to the workstations to meet a variety of needs. Table systems may be the best solution when flexibility is a priority.



► Cambridge Series

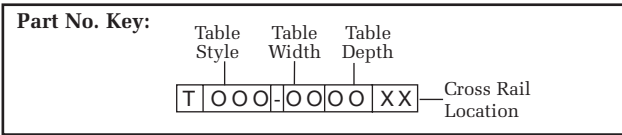


Table Style:

- 100 = Standard Standing Height Workstation
- 110 = Standard Sitting Height Workstation
- 200 = Cantilever Standing Height Workstation
- 210 = Cantilever Sitting Height Workstation
- 300 = Ergonomic Workstation
- 400 = Hydraulic Workstation
- 500 = Adjustable Height Workstation

Table size:

The table part number refers to work surface size. The table frame is 2" smaller in depth than the work surface and 4" smaller in length. Custom sizes are available upon request.

Cross Rail:

The location of the cross rail on all series 100, 110, 400, and 500 must be specified.

- Rear = RR
- Center = CR

Worksurface:

Cambridge Series Tables are available with a variety of worksurfaces. See page 8-5 for options.



Table Systems

CAMBRIDGE SERIES

- ▶ **100 - Standard Standing Height Workstation**
- ▶ **110 - Standard Sitting Height Workstation**



* Please Specify Cross Rail Location - Rear or Center

The 100 and 110 Series tables are strong and versatile. Their all-welded construction uses 16 gauge formed aprons, 2" square tubing, and welded bottom cross members to create a full perimeter frame capable of supporting an evenly distributed 1,000 pound load. Micro adjusting levelers are standard and provide a stable work surface on uneven floors.

100 Series: 36" Standing Height

30" Deep	
Part No.	Description
T100-4830	48" W x 30" DP x 36" H
T100-6030	60" W x 30" DP x 36" H
T100-7230	72" W x 30" DP x 36" H
T100-9630	96" W x 30" DP x 36" H

36" Deep	
Part No.	Description
T100-4836	48" W x 36" DP x 36" H
T100-6036	60" W x 36" DP x 36" H
T100-7236	72" W x 36" DP x 36" H
T100-9636	96" W x 36" DP x 36" H

110 Series: 30" Sitting Height

30" Deep	
Part No.	Description
T110-4830	48" W x 30" DP x 30" H
T110-6030	60" W x 30" DP x 30" H
T110-7230	72" W x 30" DP x 30" H
T110-9630	96" W x 30" DP x 30" H

36" Deep	
Part No.	Description
T110-4836	48" W x 36" DP x 30" H
T110-6036	60" W x 36" DP x 30" H
T110-7236	72" W x 36" DP x 30" H
T110-9636	96" W x 36" DP x 30" H

- ▶ **200 - Cantilever Standing Height Workstation**
- ▶ **210 - Cantilever Sitting Height Workstation**



* Workstation shown with optional modesty panel.

The cantilevered design makes the 200 and 210 Series a perfect choice in applications requiring operator clearance beneath the work surface. Their all-welded construction uses 16 gauge formed aprons, 2" square tubing and welded bottom cross members to create a full perimeter frame capable of supporting an evenly distributed 500 pound load. Micro adjusting levelers are standard and provide a stable work surface on uneven floors.

200 Series: 36" Standing Height

30" Deep	
Part No.	Description
T200-4830	48" W x 30" DP x 36" H
T200-6030	60" W x 30" DP x 36" H
T200-7230	72" W x 30" DP x 36" H
T200-9630	96" W x 30" DP x 36" H

36" Deep	
Part No.	Description
T200-4836	48" W x 36" DP x 36" H
T200-6036	60" W x 36" DP x 36" H
T200-7236	72" W x 36" DP x 36" H
T200-9636	96" W x 36" DP x 36" H

210 Series: 30" Sitting Height

30" Deep	
Part No.	Description
T210-4830	48" W x 30" DP x 30" H
T210-6030	60" W x 30" DP x 30" H
T210-7230	72" W x 30" DP x 30" H
T210-9630	96" W x 30" DP x 30" H

36" Deep	
Part No.	Description
T210-4836	48" W x 36" DP x 30" H
T210-6036	60" W x 36" DP x 30" H
T210-7236	72" W x 36" DP x 30" H
T210-9636	96" W x 36" DP x 30" H

Table Systems

CAMBRIDGE SERIES

▶ 300 - Ergonomic Workstation



The Ergonomic 300 Series features hand-crank, hydraulic telescoping legs, and a wide range of accessories. The 300 Series is well suited for light manufacturing uses and is capable of supporting an evenly distributed 500-pound load. Note: 12" height adjustment range is standard from 30-42" high. Other ranges are available upon request.

30" Deep	
Part No.	Description
T300-4830	48" W x 30" DP x Adj. H
T300-6030	60" W x 30" DP x Adj. H
T300-7230	72" W x 30" DP x Adj. H

36" Deep	
Part No.	Description
T300-4836	48" W x 36" DP x Adj. H
T300-6036	60" W x 36" DP x Adj. H
T300-7236	72" W x 36" DP x Adj. H

▶ 400 - Hydraulic Workstation



Designed with hydraulic leveling technology, our Cambridge 400 Series enables positive height adjustment with the simple turn of a handle. Elastomer floor contacts insure strong, steady, and level operation in even the most demanding applications. Total capacity is an evenly distributed 1,000 pound load. Note: 12" height adjustment range is standard from 30" 42" high. Other ranges are available upon request.

30" Deep	
Part No.	Description
T400-4830	48" W x 30" DP x Adj. H
T400-6030	60" W x 30" DP x Adj. H
T400-7230	72" W x 30" DP x Adj. H
T400-9630	96" W x 30" DP x Adj. H

36" Deep	
Part No.	Description
T400-4836	48" W x 36" DP x Adj. H
T400-6036	60" W x 36" DP x Adj. H
T400-7236	72" W x 36" DP x Adj. H
T400-9636	96" W x 36" DP x Adj. H

* Please specify cross rail location - rear or center.

▶ 500 - Adjustable Height Workstation



Pushpin construction makes the 500 Series easy to raise and lower. This system is the economic choice when height adjustment is required. Note: 12" height adjustment range is standard from 30-42" high. Other ranges are available upon request.

30" Deep	
Part No.	Description
T500-4830	48" W x 30" DP x Adj. H
T500-6030	60" W x 30" DP x Adj. H
T500-7230	72" W x 30" DP x Adj. H
T500-9630	96" W x 30" DP x Adj. H

36" Deep	
Part No.	Description
T500-4836	48" W x 36" DP x Adj. H
T500-6036	60" W x 36" DP x Adj. H
T500-7236	72" W x 36" DP x Adj. H
T500-9636	96" W x 36" DP x Adj. H

* Workstation shown with optional casters.

* Please specify cross rail location - rear or center.

Table Systems

CAMBRIDGE SERIES

► Table Work Surfaces

► Plastic Laminate Work Surface



The Plastic Laminate Work Surface is the economic choice for the Cambridge table systems. It is constructed from medium density particle core, .050 high-pressure laminate, phenolic backer sheet, and a variety of edge treatments. This durable work surface is available in a wide selection of colors. Please indicate edge treatment.

Part No.	Description
__ 4830	48" W x 30" DP
__ 6030	60" W x 30" DP
__ 7230	72" W x 30" DP
__ 9630	96" W x 30" DP
__ 4836	48" W x 36" DP
__ 6036	60" W x 36" DP
__ 7236	72" W x 36" DP
__ 9636	96" W x 36" DP

TM = T-mold edgebanding
 SE = Plastic laminate self edge
 3M = 3mm PVC edgebanding
 HB = 90P Postform, self edge
 FB = 180P Postform, self edge

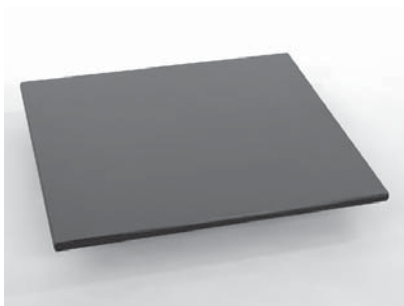
► Epoxy Resin Work Surface



The Epoxy Resin Work Surface is the durable choice of the Cambridge table systems. It is resistant to heat, stains, and the corrosive effects of most laboratory chemicals. Epoxy work surface is 1" black.

Part No.	Description
ER 4830	48" W x 30" DP
ER 6030	60" W x 30" DP
ER 7230	72" W x 30" DP
ER 9630	96" W x 30" DP
ER 4836	48" W x 36" DP
ER 6036	60" W x 36" DP
ER 7236	72" W x 36" DP
ER 9636	96" W x 36" DP

► Phenolic Work Surface



The Phenolic Resin Work Surface is the outstanding choice to meet all of your laboratory needs. It is resistant to moisture, scratches, and the corrosive effects of most laboratory chemicals. A variety of surface colors are available.

Part No.	Description
PH 4830	48" W x 30" DP
PH 6030	60" W x 30" DP
PH 7230	72" W x 30" DP
PH 9630	96" W x 30" DP
PH 4836	48" W x 36" DP
PH 6036	60" W x 36" DP
PH 7236	72" W x 36" DP
PH 9636	96" W x 36" DP

► Stainless Steel Work Surface



Resistant to heat, stains, and corrosives, stainless steel is easy to clean and can have a visual impact on your laboratory. It is constructed from 16-gauge type 304 stainless steel with a #4 satin finish and features all metal hat channel supports. Type 316 stainless steel is also available upon request. Marine edge and back splash are optional.

Part No.	Description
SS 4830	48" W x 30" DP
SS 6030	60" W x 30" DP
SS 7230	72" W x 30" DP
SS 9630	96" W x 30" DP
SS 4836	48" W x 36" DP
SS 6036	60" W x 36" DP
SS 7236	72" W x 36" DP
SS 9636	96" W x 36" DP

*Worksurface shown with optional marine edge and back splash.

www.newenglandlab.com

Table Systems

CAMBRIDGE SERIES

► Accessories

► Casters



Casters can be added to most Cambridge Series tables to make mobile workstations. Our standard 4" x 1 1/4" polyurethane wheels provide smooth rolling. All Casters are swivel type and include a dual locking mechanism for locking both swivel and wheel. Capacity is 250 pounds per caster.

Part No.	Description
9450	set of (4) 4" Dia Swivel Casters

► Vertical Uprights



Our Vertical Uprights are manufactured of 1 5/8" x 1 5/8" x 12 gauge channel. Vertical uprights bolt to the rear of the workstation for infinite adjustment of accessories above the work surface (12" required below the work surface for mounting). Priced per pair.

Part No.	Description
9455	36" Uprights
9460	48" Uprights
9470	60" Uprights

► Flat Overhead Shelf



Our Flat Overhead Shelf is manufactured to be 1 1/4" thick with a high-pressure laminate surface, plastic edgebanding, and includes a heavy-duty welded support frame. All shelves are infinitely adjustable on our vertical uprights. Other shelving materials are available upon request.

Part No.	Description
9200	48"W x 12"DP
9203	60"W x 12"DP
9206	72"W x 12"DP
9209	96"W x 12"DP

► Sloped Overhead Shelf



The Sloped Overhead Shelf is manufactured to be 1 1/4" thick with a high-pressure plastic laminate surface, plastic edgebanding, painted metal retainers on three sides, and includes a heavy duty welded support frame. All shelves are infinitely adjustable on our vertical uprights. Other shelving materials are available upon request.

Part No.	Description
9224	48" W x 12" DP
9227	60" W x 12" DP
9230	72" W x 12" DP
9233	96" W x 12" DP

Table Systems

CAMBRIDGE SERIES

► Accessories

► Lower Shelf



Our 12" deep Lower Shelf is manufactured to be 1 1/4" thick with a high-pressure laminate surface, and vinyl T-mold edgbanding. Other shelving materials are available upon request.

Part No.	Description
9320	48" W x 12" DP Lower Shelf
9325	60" W x 12" DP Lower Shelf
9330	72" W x 12" DP Lower Shelf
9335	96" W x 12" DP Lower Shelf

► Full Depth Lower Shelf



Our Full-Depth Lower Shelf is manufactured to be 1 1/4" thick with a high-pressure laminate surface, and vinyl T-mold edgbanding. Other shelving materials are available upon request.

Part No.	Description
9340	48" Bench x DP
9341	60" Bench x DP
9342	72" Bench x DP
9343	96" Bench x DP

► Tubular Instrument Shelf



Our heavy-duty Tubular Instrument Shelf offers ample support for heavy equipment and easily fastens to the work surface. Standard construction is 18" high x 10" deep with a 1 1/4" plastic laminate shelf and plastic edgebanding. Other shelving materials, heights and depths are available upon request.

Part No.	Description
9149	48"W x 12"DP x 18"H
9154	60"W x 12"DP x 18"H
9159	72"W x 12"DP x 18"H
9164	96"W x 12"DP x 18"H

► Modesty Panel



Our Modesty Panel is available for added privacy at the workstation. Each panel fastens to the rear legs and is finished in decorative white melamine with Black vinyl T-mold edgbanding.

Part No.	Description
9350	48" Modesty Panel
9351	60" Modesty Panel
9352	72" Modesty Panel
9353	96" Modesty Panel

► Accessories

► Light Frame Assembly



Our Overhead Light Frame Assembly includes a dual bulb light fixture with on/off switch and 9' power cord. The frame is welded construction and is infinitely adjustable on our vertical uprights.

Part No.	Description
9500	48" Light Frame/36" Light
9505	60" Light Frame/48" Light
9510	72" Light Frame/48" Light
9515	96" Light Frame/48" Light

► Task Light



Lights can be mounted to the underside of any of our shelves. An on/off switch and a 9' power cord are included. (Shelf not included)

Part No.	Description
TL36	36" Task Light
TL48	48" Task Light

► Electrical Strip Assembly



Our standard Electrical Strip is 15 amperes, 125 volts with an on/off switch, circuit breaker, power indicator light, and a 6' power cord. Color is grey. Mounting rail is included and is infinitely adjustable on our vertical uprights.

Part No.	Description
ES48	48" L (8) Outlets
ES60	60" L (8) Outlets
ES72	72" L (8) Outlets
ES96	96" L (8) Outlets

► Book Stop Rail



Our Book Stop Rail is manufactured of heavy gauge, formed steel and mounts to uprights at the desired height above the shelf.

Part No.	Description
9545	48" Book Stop
9550	60" Book Stop
9555	72" Book Stop
9560	96" Book Stop

Table Systems

CAMBRIDGE SERIES

► Accessories

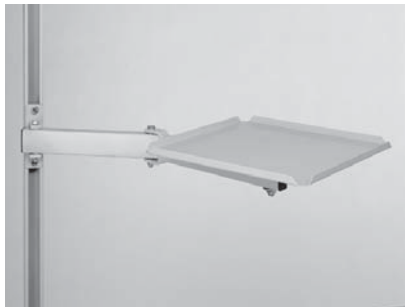
► Book Ends



Bookends are fabricated of 13-gauge steel with painted finish and are mechanically fastened to the underside of the shelf. Priced per pair.

Part No.	Description
9362	11 3/4" DP x 5" H

► Monitor Arm



Our standard Monitor Arm comes with a 13" x 13" tray with 360° swivel rotation and a dual pivot arm assembly. A clip-on keyboard tray (not shown) is optional.

Part No.	Description
9621	Monitor Arm Assembly
9622	Clip-on Keyboard Tray

► Keyboard Tray



Our pullout Keyboard Tray provides 7" height adjustment, 360° swivel, +15°/-15° tilt adjustment, and a 23" x 11" keyboard platform.

Part No.	Description
7400	Keyboard Tray

Table Systems

CAMBRIDGE SERIES

► CPU Holder



The CPU holds most computer towers and pulls out for easy access. A 1/2" lip at the rear prevents the CPU from sliding backwards when the holder is pulled out. 20" H x 10 1/2" W x 22" D.

Part No.	Description
CPU1	CPU Holder

► Pencil Drawer



The pencil drawer is 2 1/2" high and can be positioned anywhere between the legs of the table. It comes with full extension ball bearing slides.

Part No.	Description
PD20	Pencil Drawer

► Pull Out Writing Tablet



The writing tablet is 2 1/2" high and can be positioned anywhere between the legs of the table. The unit has a steel writing surface on full extension ball bearing slides.

Part No.	Description
PT20	Pull Out Writing Tablet

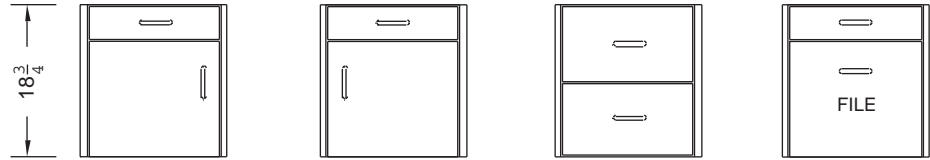
Table Systems

CAMBRIDGE SERIES

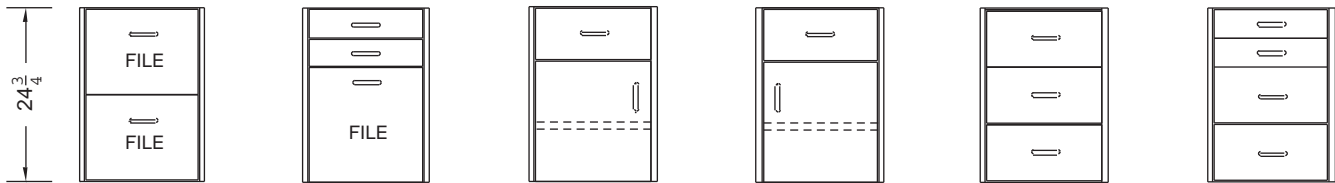
► Suspended Metal Cabinets



The Cambridge Series offers a wide variety of suspended storage solutions. The 22" deep painted metal cabinets are available in two widths, two heights, and a range of drawer and drawer/door configurations. All suspended metal cabinets hang on pre-installed metal cross rails, allowing no tool installation and easy side-to-side relocation. All cabinets are supplied with finished backs. A range of colors is available from New England Lab's color chart.



Part No.	Width	Part No.	Width	Part No.	Width	Part No.	Width
1960222-15	15" W	1960022-15	15" W	1960044-15	15" W	1960177-15	15" W
1160222-15	18" W	1160022-15	18" W	1160044-15	18" W	1160177-15	18" W
1260222-15	24" W	1260022-15	24" W	1260044-15	24" W	1260177-15	24" W

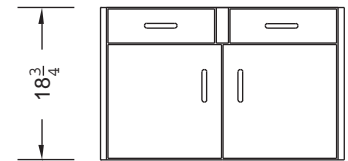


Part No.	Width	Part No.	Width	Part No.	Width	Part No.	Width	Part No.	Width	Part No.	Width
1950122-15	15" W	1950188-15	15" W	1950222-15	15" W	1950022-15	15" W	1950044-15	15" W	1950055-15	15" W
1150122-15	18" W	1150188-15	18" W	1150222-15	18" W	1150022-15	18" W	1150044-15	18" W	1150055-15	18" W
1250122-15	24" W	1250188-15	24" W	1250222-15	24" W	1250022-15	24" W	1250044-15	24" W	1250055-15	24" W

► Suspended Metal Cabinets



For maximum storage, wider models are also available in four widths, two heights, and a variety of drawer and drawer/door configurations. A range of colors is available from New England Lab's color chart.



Part No.	Width
1360022-15	30" W
1460022-15	36" W
1860022-15	42" W
1560022-15	48" W



Part No.	Width	Part No.	Width	Part No.	Width
1350044-15	30" W	1350055-15	30" W	1350022-15	30" W
1450044-15	36" W	1450055-15	36" W	1450022-15	36" W
1850044-15	42" W	1850055-15	42" W	1850022-15	42" W
1550044-15	48" W	1550055-15	48" W	1550022-15	48" W

Table Systems

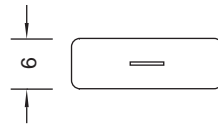
CAMBRIDGE SERIES

► Suspended Cabinets - Plastic Laminate

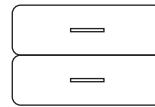


For economical storage solutions, the Cambridge Series offers a variety of suspended plastic laminate cabinets. All cabinets are constructed of white thermoset melamine board with black vinyl T-mold edgebanding and measure 18" wide by 22" deep.

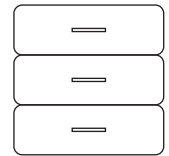
► 6" Drawer Units



Part No.
9100



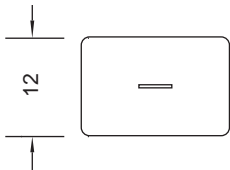
Part No.
9110



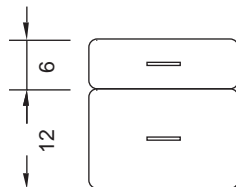
Part No.
9120



► 12" Drawer Units

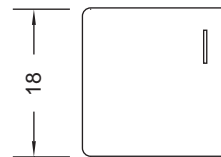


Part No.
9105

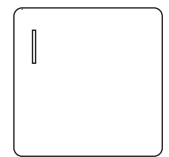


Part No.
9125

► Cupboard Units



Part No.
9120CL



Part No.
9120CR

Table Systems

CAMBRIDGE SERIES

► Specialty Tables

► PC Cart



The PC Cart is a great way to make your computer mobile. The PC cart features durable locking casters, a push handle, an adjustable keyboard tray with swing out mouse pad, and a bottom shelf with room for a computer tower and most printers.

Part No.	Description
PC 3124	31" W x 24" DP x 33" H

► Balance Tables



New England Lab offers a quality balance table utilizing the superior chemical resistance of epoxy resin. This heavy table provides vibration free stability and maximum damping effect for analytical instrument scales. Top and legs are 2 1/2" thick, made of laminated epoxy. 1 1/2" black iron pipe provides additional stability. Standard tables are 30" high. Custom sizes are available. Tables are available in black.

Part No.	Description
DBT2424B	24" W x 24" DP x 30" H
DBT2430B	30" W x 24" DP x 30" H
DBT3030B	30" W x 30" DP x 30" H
DBT3036B	36" W x 30" DP x 30" H

Table Systems

METRO®

► Clean Tables



Clean Table with H-Frame

Built for cleanliness and stability, these tables feature a seamless 14-gauge stainless steel work surface, and support structure that virtually eliminates “drumming.” HD Super™ posts and proven Super Erecta construction throughout. Units are shipped knocked down and can be assembled in minutes with out tools.

All Clean Tables are 34” high with stationary posts and leveling feet.

Standard Make-Up Tables – 30” wide

Part No.	Length inches	Post Material	Bottom Shelf Material	Bottom 3-Sided Frame Material	Bottom H-Frame Material	Approximate Weight - lbs.
WT306FS	60	SS	SS	–	–	121
WT307FS	72	SS	SS	–	–	139
WT309FS	96	SS	SS	–	–	169
WT306FC	60	Chrome	Galvanized	–	–	121
WT307FC	72	Chrome	Galvanized	–	–	139
WT309FC	96	Chrome	Galvanized	–	–	169
WT306US	60	SS	–	SS	–	104
WT307US	72	SS	–	SS	–	121
WT309US	96	SS	–	SS	–	150
WT306HS	60	SS	–	–	SS	104
WT307HS	72	SS	–	–	SS	120
WT309HS	96	SS	–	–	SS	150



Clean Table with 3-Sided Frame

36” wide

Part No.	Length inches	Post Material	Bottom Shelf Material	Bottom 3-Sided Frame Material	Bottom H-Frame Material	Approximate Weight - lbs.
WT306FS	60	SS	SS	–	–	121
WT307FS	72	SS	SS	–	–	139
WT309FS	96	SS	SS	–	–	169
WT306FC	60	Chrome	Galvanized	–	–	121
WT307FC	72	Chrome	Galvanized	–	–	139
WT309FC	96	Chrome	Galvanized	–	–	169
WT306US	60	SS	–	SS	–	104
WT307US	72	SS	–	SS	–	121
WT309US	96	SS	–	SS	–	150
WT306HS	60	SS	–	–	SS	104
WT307HS	72	SS	–	–	SS	120
WT309HS	96	SS	–	–	SS	150

Table Systems

METRO®

► Mobile Clean Tables



Mobile Make-Up Table

All Mobile Clean Tables are 34" high. Mobile units have special posts and four 5" poly casters – 2 swivel/2 brake.

30" wide

Part No.	Length inches	Post Material	Bottom Shelf Material	Bottom 3-Sided Frame Material	Bottom H-Frame Material	Approximate Weight - lbs.
MWT306FS	60	SS	SS	–	–	134
MWT307FS	72	SS	SS	–	–	152
MWT309FS	96	SS	SS	–	–	182
MWT306FC	60	Chrome	Galvanized	–	–	134
MWT307FC	72	Chrome	Galvanized	–	–	152
MWT309FC	96	Chrome	Galvanized	–	–	182
MWT306US	60	SS	–	SS	–	117
MWT307US	72	SS	–	SS	–	134
MWT309US	96	SS	–	SS	–	163
MWT306HS	60	SS	–	–	SS	117
MWT307HS	72	SS	–	–	SS	133
MWT309HS	96	SS	–	–	SS	163

► Clean Tables With Overhead

All Clean Tables with Overhead have rear stationary posts that are approximately 88" high. Posts are fitted with adjustable leveling feet. Cantilever shelves for overhead models are sold separately.

30" wide

Part No.	Length inches	Post Material	Bottom Shelf Material	Bottom 3-Sided Frame Material	Approximate Weight - lbs.
WTC306FS	60	SS	SS	–	132
WTC307FS	72	SS	SS	–	150
WTC309FS	96	SS	SS	–	179
WTC306FC	60	Chrome	Galvanized	–	132
WTC307FC	72	Chrome	Galvanized	–	150
WTC309FC	96	Chrome	Galvanized	–	179
WTC306US	60	SS	–	SS	115
WTC307US	72	SS	–	SS	130
WTC309US	96	SS	–	SS	159