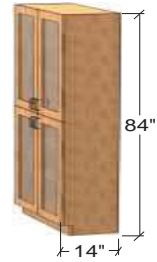


WOOD CASEWORK
FLOOR CABINETS

Open Units



Width	Item Number
18"	6110010W
24"	6210010W
30"	6310010W
36"	6410010W
42"	6610010W
48"	6510010W
513mm	6910010W
1000mm	6810010W

Hinged Framed Door Units



up to 24" wide



30" and wider

Width	Right Hinged	Left Hinged	# of Doors
18"	6110030W	6110230W	2
24"	6210030W	6210230W	2
30"	6310030W	-	4
36"	6410030W	-	4
42"	6610030W	-	4
48"	6510030W	-	4
513mm	6910030W	6910230W	2
1000mm	6810030W	-	4

- Add Option Code 80 to order full height doors.
- Full height door units have a fixed center shelf.

Hinged Door Units



up to 24" wide



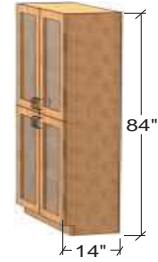
30" and wider

Width	Right Hinged	Left Hinged	# of Doors
18"	6110060W	6110260W	2
24"	6210060W	6210260W	2
30"	6310060W	-	4
36"	6410060W	-	4
42"	6610060W	-	4
48"	6510060W	-	4
513mm	6910060W	6910260W	2
1000mm	6810060W	-	4

- Add Option Code 80 to order full height doors.
- Full height door units have a fixed center shelf.

**WOOD CABINETS
FLOOR CABINETS**

Sliding Glass Door Units



Width	Item Number
30"	6310020W
36"	6410020W
42"	6610020W
48"	6510020W
1000mm	6810020W

- Add Option Code 80 to order full height doors.
- Full height door units have a fixed center shelf.

Sliding Framed Door Units



Width	Item Number
30"	6310040W
36"	6410040W
42"	6610040W
48"	6510040W
1000mm	6810040W

- Add Option Code 80 to order full height doors.
- Full height door units have a fixed center shelf.

Sliding Door Units

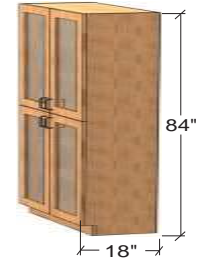


Width	Item Number
30"	6310050W
36"	6410050W
42"	6610050W
48"	6510050W
1000mm	6810050W

- Add Option Code 80 to order full height doors.
- Full height door units have a fixed center shelf.

**WOOD CASEWORK
FLOOR CABINETS**

Open Units



Width	Item Number
18"	6120010W
24"	6220010W
30"	6320010W
36"	6420010W
42"	6620010W
48"	6520010W
513mm	6920010W
1000mm	6820010W

Hinged Framed Door Units



up to 24" wide



30" and wider

Width	Right Hinged	Left Hinged	# of Doors
18"	6120030W	6120230W	2
24"	6220030W	6220230W	2
30"	6320030W	-	4
36"	6420030W	-	4
42"	6620030W	-	4
48"	6520030W	-	4
513mm	6920030W	6920230W	2
1000mm	6820030W	-	4

- Add Option Code 80 to order full height doors.
- Full height door units have a fixed center shelf.

Hinged Door Units



up to 24" wide



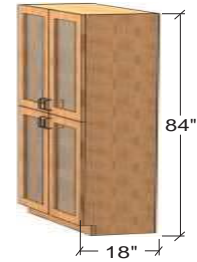
30" and wider

Width	Right Hinged	Left Hinged	# of Doors
18"	6120060W	6120260W	2
24"	6220060W	6220260W	2
30"	6320060W	-	4
36"	6420060W	-	4
42"	6620060W	-	4
48"	6520060W	-	4
513mm	6920060W	6920260W	2
1000mm	6820060W	-	4

- Add Option Code 80 to order full height doors.
- Full height door units have a fixed center shelf.

**WOOD CABINETS
FLOOR CABINETS**

Sliding Glass Door Units



Width	Item Number
30"	6320020W
36"	6420020W
42"	6620020W
48"	6520020W
1000mm	6820020W

- Add Option Code 80 to order full height doors.
- Full height door units have a fixed center shelf.

Sliding Framed Door Units



Width	Item Number
30"	6320040W
36"	6420040W
42"	6620040W
48"	6520040W
1000mm	6820040W

- Add Option Code 80 to order full height doors.
- Full height door units have a fixed center shelf.

Sliding Door Units



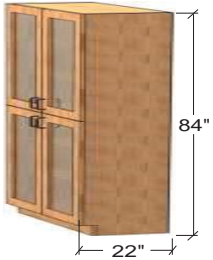
Width	Item Number
30"	6320050W
36"	6420050W
42"	6620050W
48"	6520050W
1000mm	6820050W

- Add Option Code 80 to order full height doors.
- Full height door units have a fixed center shelf.

LABORATORY FURNITURE

**WOOD CASEWORK
FLOOR CABINETS**

Open Units



Width	Item Number
18"	6130010W
24"	6230010W
30"	6330010W
36"	6430010W
42"	6630010W
48"	6530010W
513mm	6930010W
1000mm	6830010W

Hinged Framed Door Units



up to 24" wide

30" and wider

Width	Right Hinged	Left Hinged	# of Doors
18"	6130030W	6130230W	2
24"	6230030W	6230230W	2
30"	6330030W	-	4
36"	6430030W	-	4
42"	6630030W	-	4
48"	6530030W	-	4
513mm	6930030W	6930230W	2
1000mm	6830030W	-	4

- Add Option Code 80 to order full height doors.
- Full height door units have a fixed center shelf.

Hinged Door Units



up to 24" wide

30" and wider

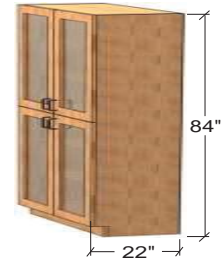
Width	Right Hinged	Left Hinged	# of Doors
18"	6130060W	6130260W	2
24"	6230060W	6230260W	2
30"	6330060W	-	4
36"	6430060W	-	4
42"	6630060W	-	4
48"	6530060W	-	4
513mm	6930060W	6930260W	2
1000mm	6830060W	-	4

- Add Option Code 80 to order full height doors.
- Full height door units have a fixed center shelf.

All dimensions and sizes shown are nominal. Specifications and details are based on product information at the time of printing and may change at any time without notice. Mott Manufacturing reserves the right to change dimensions, specifications and manufacturing details at any time without notice.

**WOOD CABINETS
FLOOR CABINETS**

Sliding Glass Door Units



Width	Item Number
30"	6330020W
36"	6430020W
42"	6630020W
48"	6530020W
1000mm	6830020W

- Add Option Code 80 to order full height doors.
- Full height door units have a fixed center shelf.

Sliding Framed Door Units



Width	Item Number
30"	6330040W
36"	6430040W
42"	6630040W
48"	6530040W
1000mm	6830040W

- Add Option Code 80 to order full height doors.
- Full height door units have a fixed center shelf.

Sliding Door Units

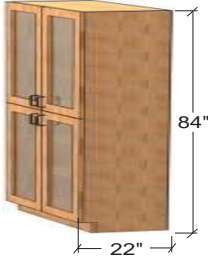


Width	Item Number
30"	6330050W
36"	6430050W
42"	6630050W
48"	6530050W
1000mm	6830050W

- Add Option Code 80 to order full height doors.
- Full height door units have a fixed center shelf.

WOOD CASEWORK
SPECIALTY FLOOR CABINETS

Wardrobe Units



up to 24" wide

30" and wider

Width	Right Hinged	Left Hinged	# of Doors
15"	6A35060W	6A35260W	1
18"	6135060W	6135260W	1
24"	6235060W	6235260W	1
30"	6335060W	-	2
36"	6435060W	-	2
42"	6635060W	-	2
48"	6535060W	-	2

- Wardrobe Units have solid hinged double doors and include one fixed shelf and a clothes rod.
- Units must have a minimum depth of 22" to hold hangers.
- Mirror is not included.



Width	Item Number
30"	6335660W
36"	6435660W
42"	6635660W
48"	6535660W

- Wardrobe Units have solid hinged double doors and include one fixed shelf with attached clothes rod on the left side and four adjustable shelves on the right side.
- Units must have a minimum depth of 22" to hold hangers.
- Mirror is not included.



Width	Item Number
30"	6335760W
36"	6435760W
42"	6635760W
48"	6535760W

- Wardrobe Units have solid hinged double doors and include one fixed shelf with attached clothes rod on the right side and four adjustable shelves on the left side.
- Units must have a minimum depth of 22" to hold hangers.
- Mirror is not included.

WOOD CABINETS
SPECIALTY FLOOR CABINETS

Instrument Storage Units



up to 24" wide



30" and wider

Width	Right Hinged	Left Hinged	# of Doors
18"	61200A0W	61202A0W	2
24"	62200A0W	62202A0W	2
30"	63200A0W	-	4
36"	64200A0W	-	4
42"	66200A0W	-	4
48"	65200A0W	-	4
513mm	69200A0W	69202A0W	2
1000mm	68200A0W	-	4

- The upper section on the Instrument Storage Units has hinged framed glass doors with three adjustable shelves inside.
- The lower section is 34-3/4" high, with hinged solid doors and one adjustable shelf inside.



Width	Item Number
30"	63200B0W
36"	64200B0W
42"	66200B0W
48"	65200B0W
1000mm	68200B0W

- The upper section on the Instrument Storage Units has sliding framed glass doors with three adjustable shelves inside.
- The lower section is 34-3/4" high, with hinged solid doors, one adjustable shelf inside and two bulletin boards.



Width	Item Number
30"	63200C0W
36"	64200C0W
42"	66200C0W
48"	65200C0W
1000mm	68200C0W

- The upper section on the Instrument Storage Units has sliding framed glass doors with three adjustable shelves inside.
- The lower section is 34-3/4" high, with sliding solid doors, one adjustable shelf inside and two bulletin boards.

WOOD CASEWORK
SPECIALTY FLOOR CABINETS

Instrument Storage Units



24" wide

Width	Right Hinged	Left Hinged
24"	6227030W	6227230W

- The 24" wide Instrument Storage Units have a hinged framed glass door with 15 compartments.
- Unit comes with four adjustable shelves.



36" wide

Width	Item Number
36"	6427030W

- The 36" wide Instrument Storage Unit has hinged framed glass double doors with 20 compartments.
- Unit comes with four adjustable shelves.



48" wide

Width	Item Number
48"	6527030W

- The 48" wide Instrument Storage Unit has hinged framed glass double doors with 30 compartments.
- Unit comes with four adjustable shelves.