

**WOOD CASEWORK
SUSPENDED CABINETS**

Open Units



Note: Add Option Code 15 to order a finished back on these units.

Width	Item Number
15"	1950000W
18"	1150000W
24"	1250000W
30"	1350000W
36"	1450000W
42"	1850000W
48"	1550000W
513mm	1650000W
1000mm	1750000W

Full Door Units



up to 24" wide



30" and wider

Width	Right Hinged	Left Hinged	# of Doors
15"	1950011W	1950211W	1
18"	1150011W	1150211W	1
24"	1250011W	1250211W	1
30"	1350011W	-	2
36"	1450011W	-	2
42"	1850011W	-	2
48"	1550011W	-	2
513mm	1650011W	1650211W	1
1000mm	1750011W	-	2

Door/Drawer Units



up to 24" wide



30" and wider

Width	Right Hinged	Left Hinged	# of Doors
15"	1950022W	1950222W	1
18"	1150022W	1150222W	1
24"	1250022W	1250222W	1
30"	1350022W	-	2
36"	1450022W	-	2
42"	1850022W	-	2
48"	1550022W	-	2
513mm	1650022W	1650222W	1
1000mm	1750022W	-	2

- Cabinets up to 24" wide receive one shelf.
- Cabinets over 30" wide do not have a shelf.

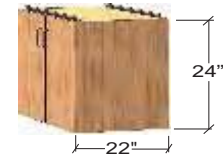


Width	Left Hand	Right Hand
30"	1350014W	1350041W
36"	1450014W	1450041W
42"	1850014W	1850041W
48"	1550014W	1550041W
1000mm	1750014W	1750041W

- Left hand Door/Drawer Unit shown.
- Right hand Door/Drawer Units are reverse of what is shown.

WOOD CASEWORK
SUSPENDED CABINETS

Drawer Units



Note: Add Option Code 15 to order a finished back on these units.



up to 24" wide



30" and wider

Width	Item Number
15"	1950044W
18"	1150044W
24"	1250044W
30"	1350044W
36"	1450044W
42"	1850044W
48"	1550044W
513mm	1650044W
1000mm	1750044W



up to 24" wide



30" and wider

Width	Item Number
15"	1950055W
18"	1150055W
24"	1250055W
30"	1350055W
36"	1450055W
42"	1850055W
48"	1550055W
513mm	1650055W
1000mm	1750055W



up to 24" wide



30" and wider

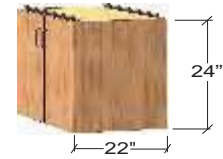
Width	Item Number
15"	1950066W
18"	1150066W
24"	1250066W
30"	1350066W
36"	1450066W
42"	1850066W
48"	1550066W
513mm	1650066W
1000mm	1750066W



Width	Item Number
30"	1350097W
36"	1450097W
42"	1850097W
48"	1550097W
1000mm	1750097W

WOOD CASEWORK
SUSPENDED CABINETS

Drawer Units



Note: Add Option Code 15 to order a finished back on these units.



Width	Item Number
30"	1350098W
36"	1450098W
42"	1850098W
48"	1550098W
1000mm	1750098W

File Drawer Units



up to 24" wide



30" and wider

Width	Item Number
15"	1950122W
18"	1150122W
24"	1250122W
30"	1350122W
36"	1450122W
42"	1850122W
48"	1550122W
513mm	1650122W
1000mm	1750122W



up to 24" wide



30" and wider

Width	Item Number
15"	1950177W
18"	1150177W
24"	1250177W
30"	1350177W
36"	1450177W
42"	1850177W
48"	1550177W
513mm	1650177W
1000mm	1750177W



up to 24" wide

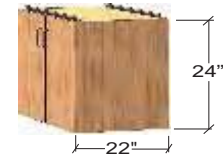


30" and wider

Width	Item Number
15"	1950188W
18"	1150188W
24"	1250188W
30"	1350188W
36"	1450188W
42"	1850188W
48"	1550188W
513mm	1650188W
1000mm	1750188W

**WOOD CASEWORK
SUSPENDED CABINETS**

Sliding Door Units



Note: Add Option Code 15 to order a finished back on these units.

Width	Item Number
30"	1350711W
36"	1450711W
42"	1850711W
48"	1550711W
1000mm	1750711W

Sink Units



up to 24" wide



30" and wider

Width	Right Hinged	Left Hinged	# of Doors
15"	1953011W	1953211W	1
18"	1153011W	1153211W	1
24"	1253011W	1253211W	1
30"	1353011W	-	2
36"	1453011W	-	2
42"	1853011W	-	2
48"	1553011W	-	2
513mm	1653011W	1653211W	1
1000mm	1753011W	-	2

Acid Storage Units



up to 24" wide



30" and wider

Width	Right Hinged	Left Hinged	# of Doors
15"	1951011W	1951211W	1
18"	1151011W	1151211W	1
24"	1251011W	1251211W	1
30"	1351011W	-	2
36"	1451011W	-	2
42"	1851011W	-	2
48"	1551011W	-	2
513mm	1651011W	1651211W	1
1000mm	1751011W	-	2

- Acid Storage Units have an FRP liner.

Solvent Storage Units



up to 24" wide



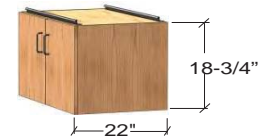
30" and wider

Width	Right Hinged	Left Hinged	# of Doors
15"	1952011W	1952111W	1
18"	1152011W	1152111W	1
24"	1252211W	1252111W	1
30"	1352011W	-	2
36"	1452011W	-	2
42"	1852011W	-	2
48"	1552011W	-	2
513mm	1652011W	1652111W	1
1000mm	1752011W	-	2

- Solvent Units are designed to meet OSHA and NFPA 30 standards.
- Add option code 83 to order self closing/latching doors.
- Add option code FL to order self closing/latching doors with a fusible link.

**WOOD CASEWORK
SUSPENDED CABINETS**

Open Units



Note: Add Option Code 15 to order a finished back on these units.

Width	Item Number
15"	1960000W
18"	1160000W
24"	1260000W
30"	1360000W
36"	1460000W
42"	1860000W
48"	1560000W
513mm	1660000W
1000mm	1760000W



Full Door Unit



up to 24" wide



30" and wider

Width	Right Hinged	Left Hinged	# of Doors
15"	1960011W	1960211W	1
18"	1160011W	1160211W	1
24"	1260011W	1260211W	1
30"	1360011W	-	2
36"	1460011W	-	2
42"	1860011W	-	2
48"	1560011W	-	2
513mm	1660011W	1660211W	1
1000mm	1760011W	-	2

Door/Drawer Units



up to 24" wide



30" and wider

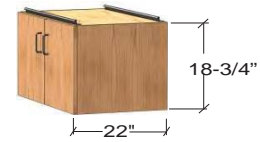
Width	Right Hinged	Left Hinged	# of Doors
15"	1960022W	1960222W	1
18"	1160022W	1160222W	1
24"	1260022W	1260222W	1
30"	1360022W	-	2
36"	1460022W	-	2
42"	1860022W	-	2
48"	1560022W	-	2
513mm	1660022W	1660222W	1
1000mm	1760022W	-	2



Width	Item Number
30"	1360041W
36"	1460041W
42"	1860041W
48"	1560041W
1000mm	1760041W

**WOOD CASEWORK
SUSPENDED CABINETS**

Drawer Units



Note: Add Option Code 15 to order a finished back on these units.



up to 24" wide



30" and wider

Width	Item Number
15"	1960044W
18"	1160044W
24"	1260044W
30"	1360044W
36"	1460044W
42"	1860044W
48"	1560044W
513mm	1660044W
1000mm	1760044W

File Drawer Units



up to 24" wide



30" and wider

Width	Item Number
15"	1960177W
18"	1160177W
24"	1260177W
30"	1360177W
36"	1460177W
42"	1860177W
48"	1560177W
513mm	1660177W
1000mm	1760177W

Sink Units



up to 24" wide



30" and wider

Width	Right Hinged	Left Hinged	# of Doors
15"	1963011W	1963211W	1
18"	1163011W	1163211W	1
24"	1263011W	1263211W	1
30"	1363011W	-	2
36"	1463011W	-	2
42"	1863011W	-	2
48"	1563011W	-	2
513mm	1663011W	1663211W	1
1000mm	1763011W	-	2

Hanging Rails



Width	Item Number
15"	HR00015
18"	HR00018
24"	HR00024
30"	HR00030
36"	HR00036
42"	HR00042
48"	HR00048
513mm	HR00020
1000mm	HR00040

- Pair of Hanging Rails only suitable for wood suspended cabinets.