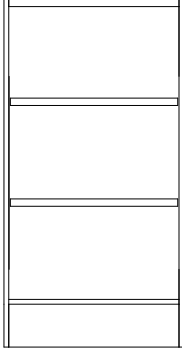


BASE CABINET

STANDARD HEIGHTS - 35" , 33" , 29" (ADD AS SUFFIX)

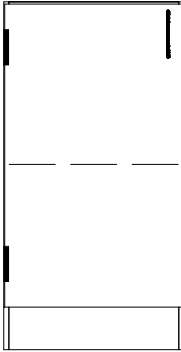
OPEN BASE CABINET



MODEL NUMBER	WIDTH	MODEL NUMBER	WIDTH
100-15	15"	100-30	30"
100-18	18"	100-36	36"
100-21	21"	100-42	42"
100-24	24"	100-48	48"

2 ADJUSTABLE SHELVES

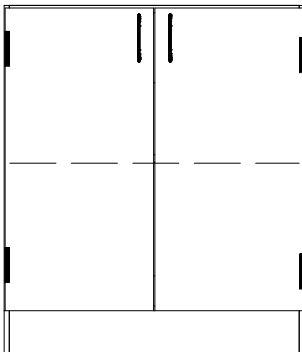
1 DOOR BASE CABINET



MODEL NUMBER	WIDTH	MODEL NUMBER	WIDTH
101-15	15"		
101-18	18"		
101-21	21"		
101-24	24"		

HINGED LEFT OR RIGHT (ADD "L"OR "R" FOR HINGING)
1 ADJUSTABLE SHELF

2 DOOR BASE CABINET



MODEL NUMBER	WIDTH	MODEL NUMBER	WIDTH
102-24	24"	102-48	48"
102-30	30"		
102-36	36"		
102-42	42"		

1 ADJUSTABLE SHELF

BMT/Nelson
CASEWORK

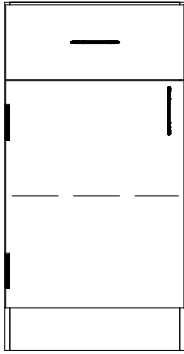
 **newenglandlab**
lab-tested furniture systems

888.635.2080 | newenglandlab.com
Baltimore • Boston • Raleigh • Richmond

BASE CABINET

STANDARD HEIGHTS - 35" , 33" , 29" (ADD AS SUFFIX)

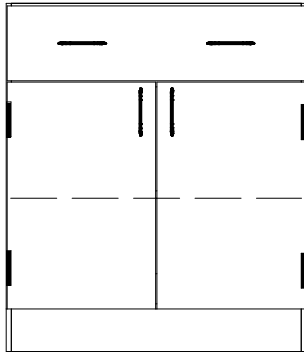
1 DRAWER / 1 DOOR BASE CABINET



MODEL NUMBER	WIDTH	MODEL NUMBER	WIDTH
103-15	15"		
103-18	18"		
103-21	21"		
103-24	24"		

HINGED LEFT OR RIGHT (ADD "L"OR "R" FOR HINGING)
1 ADJUSTABLE SHELF

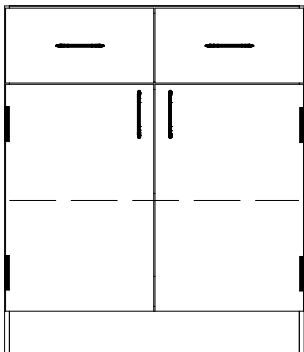
1 DRAWER / 2 DOOR BASE CABINET



MODEL NUMBER	WIDTH	MODEL NUMBER	WIDTH
104-24	24"	104-48	48"
104-30	30"		
104-36	36"		
104-42	42"		

1 ADJUSTABLE SHELF

2 DRAWER / 2 DOOR BASE CABINET



MODEL NUMBER	WIDTH	MODEL NUMBER	WIDTH
105-24	24"	105-48	48"
105-30	30"		
105-36	36"		
105-42	42"		

1 ADJUSTABLE SHELF

BMT/Nelson
CASEWORK

 **newenglandlab**[®]
lab-tested furniture systems

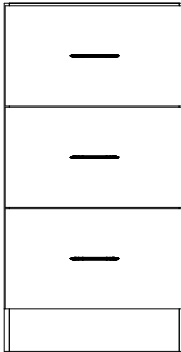
888.635.2080 | newenglandlab.com

Baltimore • Boston • Raleigh • Richmond

BASE CABINET

STANDARD HEIGHTS - 35" , 33" , 29" (ADD AS SUFFIX)

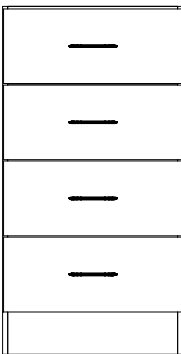
3 DRAWER BASE CABINET



MODEL NUMBER	WIDTH	MODEL NUMBER	WIDTH
106-15	15"	106-30	30"
106-18	18"	106-36	36"
106-21	21"	106-42	42"
106-24	24"	106-48	48"

EQUAL DRAWER SIZE

4 DRAWER BASE CABINET



MODEL NUMBER	WIDTH	MODEL NUMBER	WIDTH
107-15	15"	107-30	30"
107-18	18"	107-36	36"
107-21	21"	107-42	42"
107-24	24"	107-48	48"

EQUAL DRAWER SIZE

5 DRAWER BASE CABINET



MODEL NUMBER	WIDTH	MODEL NUMBER	WIDTH
108-15	15"	108-30	30"
108-18	18"	108-36	36"
108-21	21"	108-42	42"
108-24	24"	108-48	48"

EQUAL DRAWER SIZE

BMT/Nelson
CASEWORK

 **newenglandlab**
 lab-tested furniture systems

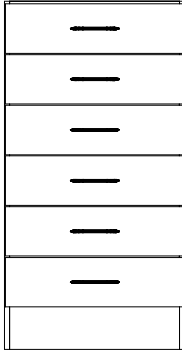
888.635.2080 | newenglandlab.com

Baltimore • Boston • Raleigh • Richmond

BASE CABINET

STANDARD HEIGHTS - 35" , 33" , 29" (ADD AS SUFFIX)

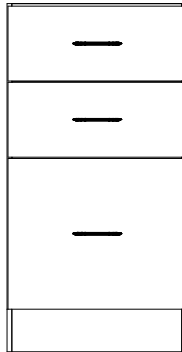
6 DRAWER BASE CABINET



MODEL NUMBER	WIDTH	MODEL NUMBER	WIDTH
109-15	15"	109-30	30"
109-18	18"	109-36	36"
109-21	21"	109-42	42"
109-24	24"	109-48	48"

EQUAL DRAWER SIZE

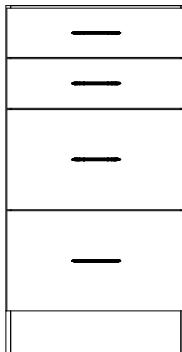
3 DRAWER FILE CABINET



MODEL NUMBER	WIDTH	MODEL NUMBER	WIDTH
110-15	15"	110-30	30"
110-18	18"	110-36	36"
110-21	21"	110-42	42"
110-24	24"	110-48	48"

BOTTOM DRAWER IS FILE DRAWER

4 DRAWER BASE CABINET



MODEL NUMBER	WIDTH	MODEL NUMBER	WIDTH
111-15	15"	111-30	30"
111-18	18"	111-36	36"
111-21	21"	111-42	42"
111-24	24"	111-48	48"

TOP 2 DRAWERS EQUAL
BOTTOM 2 DRAWERS EQUAL

BMT/Nelson
CASEWORK

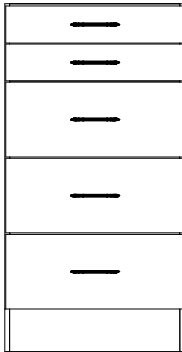
 **newenglandlab®**
lab-tested furniture systems

888.635.2080 | newenglandlab.com
Baltimore • Boston • Raleigh • Richmond

BASE CABINET

STANDARD HEIGHTS - 35" , 33" , 29" (ADD AS SUFFIX)

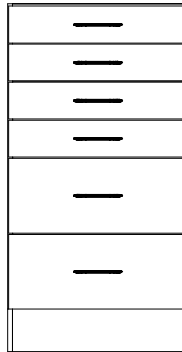
5 DRAWER BASE CABINET



MODEL NUMBER	WIDTH	MODEL NUMBER	WIDTH
112-15	15"	112-30	30"
112-18	18"	112-36	36"
112-21	21"	112-42	42"
112-24	24"	112-48	48"

TOP 2 DRAWERS EQUAL
BOTTOM 3 DRAWERS EQUAL

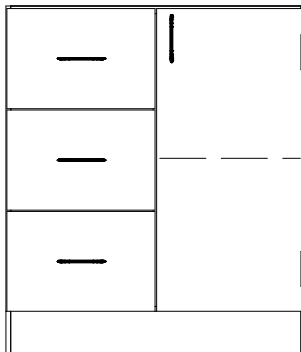
6 DRAWER BASE CABINET



MODEL NUMBER	WIDTH	MODEL NUMBER	WIDTH
113-15	15"	113-30	30"
113-18	18"	113-36	36"
113-21	21"	113-42	42"
113-24	24"	113-48	48"

4 PENCIL DRAWERS ON TOP
WITH 2 STANDARD DRAWERS ON BOTTOM

3 DRAWER / 1 DOOR BASE CABINET



MODEL NUMBER	WIDTH	MODEL NUMBER	WIDTH
114-24	24"	114-48	48"
114-30	30"		
114-36	36"		
114-42	42"		

1 ADJUSTABLE SHELF
3 EQUAL DRAWERS

BMT/Nelson
CASEWORK

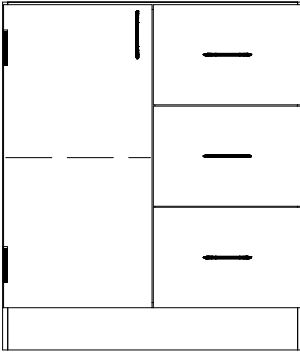
 **new england lab**
lab-tested furniture systems

888.635.2080 | newenglandlab.com
Baltimore • Boston • Raleigh • Richmond

BASE CABINET

STANDARD HEIGHTS - 35" , 33" , 29" (ADD AS SUFFIX)

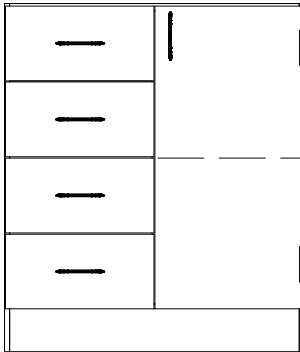
3 DRAWER / 1 DOOR BASE CABINET



MODEL NUMBER	WIDTH	MODEL NUMBER	WIDTH
115-24	24"	115-48	48"
115-30	30"		
115-36	36"		
115-42	42"		

1 ADJUSTABLE SHELF
3 EQUAL DRAWERS

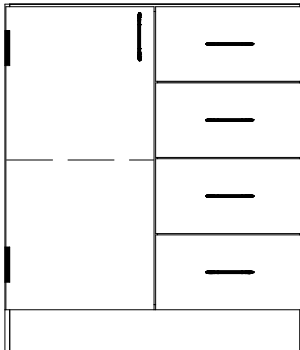
4 DRAWER / 1 DOOR BASE CABINET



MODEL NUMBER	WIDTH	MODEL NUMBER	WIDTH
116-24	24"	116-48	48"
116-30	30"		
116-36	36"		
116-42	42"		

1 ADJUSTABLE SHELF
4 EQUAL DRAWERS

4 DRAWER / 1 DOOR BASE CABINET



MODEL NUMBER	WIDTH	MODEL NUMBER	WIDTH
117-24	24"	117-48	48"
117-30	30"		
117-36	36"		
117-42	42"		

1 ADJUSTABLE SHELF
4 EQUAL DRAWERS

BMT/Nelson
CASEWORK

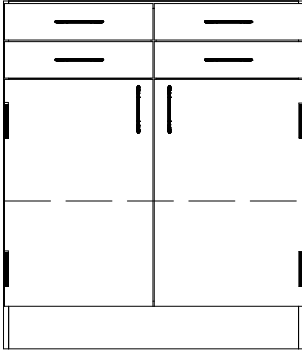
 **newenglandlab**[®]
lab-tested furniture systems

888.635.2080 | newenglandlab.com
Baltimore • Boston • Raleigh • Richmond

BASE CABINET

STANDARD HEIGHTS - 35" , 33" , 29" (ADD AS SUFFIX)

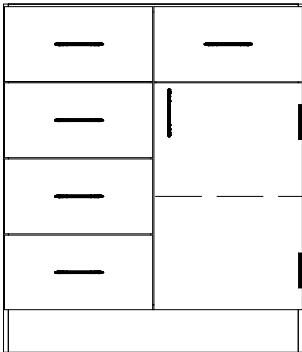
4 DRAWER / 2 DOOR BASE CABINET



MODEL NUMBER	WIDTH	MODEL NUMBER	WIDTH
118-24	24"	118-48	48"
118-30	30"		
118-36	36"		
118-42	42"		

1 ADJUSTABLE SHELF

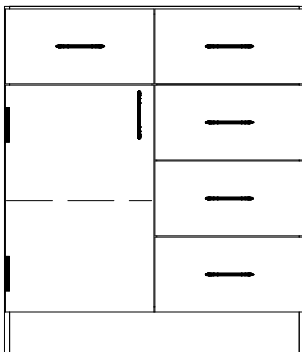
5 DRAWER / 1 DOOR BASE CABINET



MODEL NUMBER	WIDTH	MODEL NUMBER	WIDTH
119-24	24"	119-48	48"
119-30	30"		
119-36	36"		
119-42	42"		

5 EQUAL DRAWERS
1 ADJUSTABLE SHELF

5 DRAWER / 1 DOOR BASE CABINET



MODEL NUMBER	WIDTH	MODEL NUMBER	WIDTH
120-24	24"	120-48	48"
120-30	30"		
120-36	36"		
120-42	42"		

5 EQUAL DRAWERS
1 ADJUSTABLE SHELF

BMT/Nelson
CASEWORK

 **new england lab**
lab-tested furniture systems

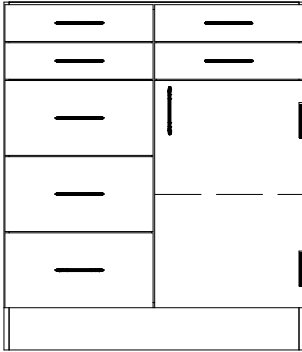
888.635.2080 | newenglandlab.com

Baltimore • Boston • Raleigh • Richmond

BASE CABINET

STANDARD HEIGHTS - 35" , 33" , 29" (ADD AS SUFFIX)

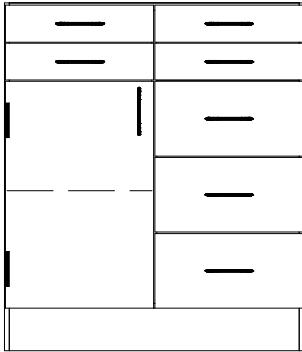
7 DRAWER / 1 DOOR BASE CABINET



MODEL NUMBER	WIDTH	MODEL NUMBER	WIDTH
121-24	24"	121-48	48"
121-30	30"		
121-36	36"		
121-42	42"		

1 ADJUSTABLE SHELF

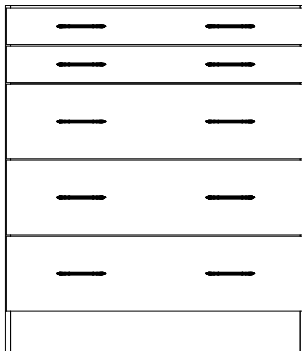
7 DRAWER / 1 DOOR BASE CABINET



MODEL NUMBER	WIDTH	MODEL NUMBER	WIDTH
122-24	24"	122-48	48"
122-30	30"		
122-36	36"		
122-42	42"		

1 ADJUSTABLE SHELF

5 DRAWER BASE CABINET



MODEL NUMBER	WIDTH	MODEL NUMBER	WIDTH
123-24	24"	123-48	48"
123-30	30"		
123-36	36"		
123-42	42"		

BMT/Nelson
CASEWORK

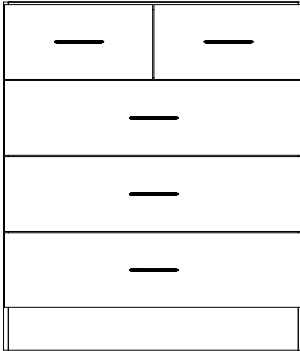
 **new england lab**
 lab-tested furniture systems

888.635.2080 | newenglandlab.com
 Baltimore • Boston • Raleigh • Richmond

BASE CABINET

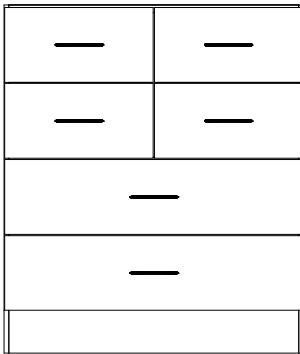
STANDARD HEIGHTS - 35" , 33" , 29" (ADD AS SUFFIX)

5 DRAWER BASE CABINET



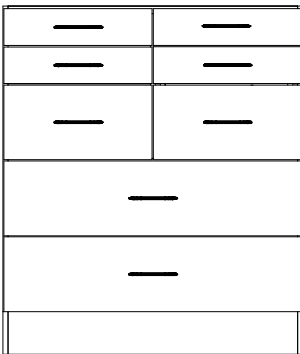
MODEL NUMBER	WIDTH	MODEL NUMBER	WIDTH
124-24	24"	124-48	48"
124-30	30"		
124-36	36"		
124-42	42"		

6 DRAWER BASE CABINET



MODEL NUMBER	WIDTH	MODEL NUMBER	WIDTH
125-24	24"	125-48	48"
125-30	30"		
125-36	36"		
125-42	42"		

8 DRAWER BASE CABINET



MODEL NUMBER	WIDTH	MODEL NUMBER	WIDTH
126-24	24"	126-48	48"
126-30	30"		
126-36	36"		
126-42	42"		

BMT/Nelson

CASEWORK

 **new england lab**
lab-tested furniture systems

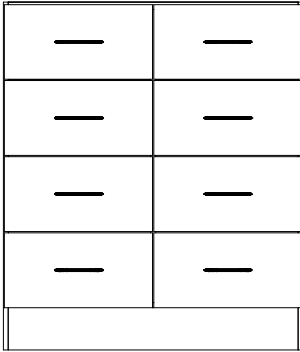
888.635.2080 | newenglandlab.com

Baltimore • Boston • Raleigh • Richmond

BASE CABINET

STANDARD HEIGHTS - 35" , 33" , 29" (ADD AS SUFFIX)

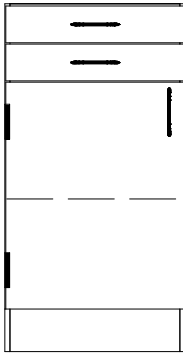
8 DRAWER BASE CABINET



MODEL NUMBER	WIDTH	MODEL NUMBER	WIDTH
127-24	24"	127-48	48"
127-30	30"		
127-36	36"		
127-42	42"		

EQUAL DRAWER SIZE

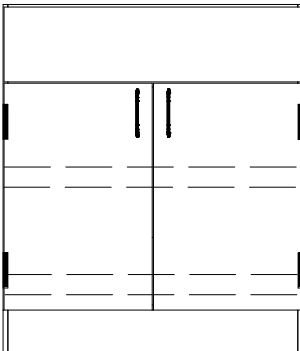
2 DRAWER / 1 DOOR BASE CABINET



MODEL NUMBER	WIDTH	MODEL NUMBER	WIDTH
128-15	15"		
128-18	18"		
128-21	21"		
128-24	24"		

HINGED LEFT OR RIGHT (ADD "L" OR "R" FOR HINGING)
1 ADJUSTABLE SHELF

FUME HOOD CABINET



MODEL NUMBER	WIDTH	MODEL NUMBER	WIDTH
129-24	24"	129-48	48"
129-30	30"		
129-36	36"		
129-42	42"		

2 ADJUSTABLE SHELVES WITH LIPS

BMT/Nelson
CASEWORK

 **new england lab**
lab-tested furniture systems

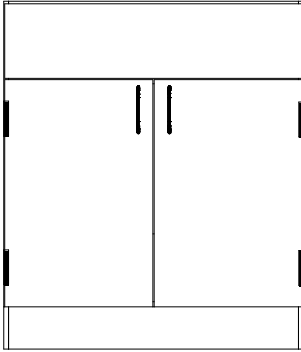
888.635.2080 | newenglandlab.com

Baltimore • Boston • Raleigh • Richmond

BASE CABINET

STANDARD HEIGHTS - 35" , 33" , 29" (ADD AS SUFFIX)

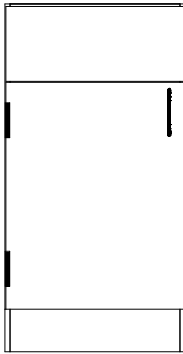
SINK CABINET



MODEL NUMBER	WIDTH	MODEL NUMBER	WIDTH
130-24	24"	130-48	48"
130-30	30"		
130-36	36"		
130-42	42"		

ADD SUFFIX "SH" FOR SINK HANGERS

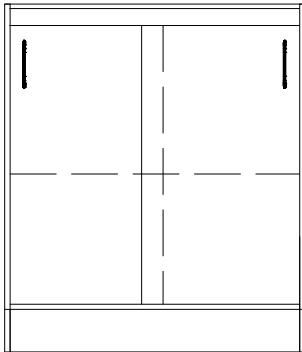
SINK CABINET



MODEL NUMBER	WIDTH	MODEL NUMBER	WIDTH
131-15	15"		
131-18	18"		
131-21	21"		
131-24	24"		

HINGED LEFT OR RIGHT (ADD "L" OR "R" FOR HINGING)
ADD SUFFIX "SH" FOR SINK HANGERS

SLIDING DOOR BASE CABINET



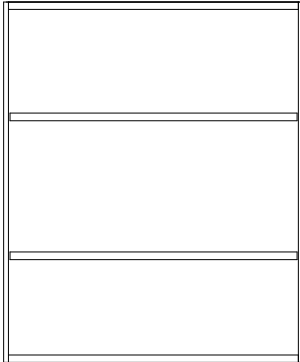
MODEL NUMBER	WIDTH	MODEL NUMBER	WIDTH
132-24	24"	132-48	48"
132-30	30"		
132-36	36"		
132-42	42"		

1 ADJUSTABLE SHELF

WALL CABINET

STANDARD HEIGHTS - 30" , 36" , 48" (ADD AS SUFFIX)

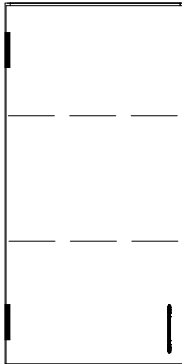
OPEN WALL CABINET



MODEL NUMBER	WIDTH	MODEL NUMBER	WIDTH
401-15	15"	401-30	30"
401-18	18"	401-36	36"
401-21	21"	401-42	42"
401-24	24"	401-48	48"

2 ADJUSTABLE SHELVES

1 DOOR WALL CABINET

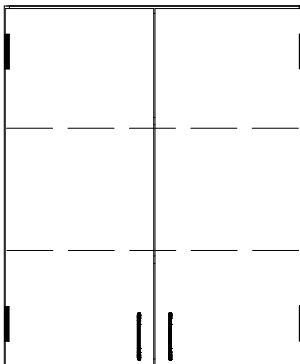


MODEL NUMBER	WIDTH	MODEL NUMBER	WIDTH
402-15	15"		
402-18	18"		
402-21	21"		
402-24	24"		

HINGED LEFT OR RIGHT (ADD "L" OR "R" FOR HINGING)

2 ADJUSTABLE SHELVES

2 DOOR WALL CABINET



MODEL NUMBER	WIDTH	MODEL NUMBER	WIDTH
403-24	24"	403-48	48"
403-30	30"		
403-36	36"		
403-42	42"		

2 ADJUSTABLE SHELVES

BMT/Nelson
CASEWORK

 **new england lab**
 lab-tested furniture systems

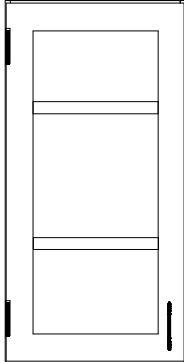
888.635.2080 | newenglandlab.com

Baltimore • Boston • Raleigh • Richmond

WALL CABINET

STANDARD HEIGHTS - 30" , 36" , 48" (ADD AS SUFFIX)

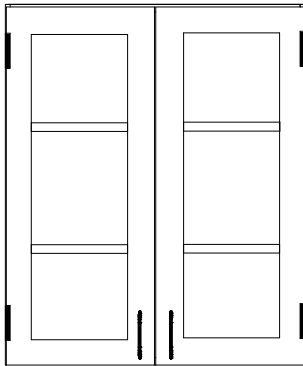
1 GLASS DOOR WALL CABINET



MODEL NUMBER	WIDTH	MODEL NUMBER	WIDTH
404-15	15"		
404-18	18"		
404-21	21"		
404-24	24"		

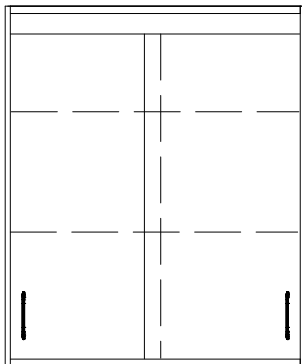
HINGED LEFT OR RIGHT (ADD "L" OR "R" FOR HINGING)
2 ADJUSTABLE SHELVES

2 GLASS DOOR WALL CABINET



MODEL NUMBER	WIDTH	MODEL NUMBER	WIDTH
405-24	24"	405-48	48"
405-30	30"		
405-36	36"		
405-42	42"		

SLIDING DOOR WALL CABINET



MODEL NUMBER	WIDTH	MODEL NUMBER	WIDTH
406-24	24"	406-48	48"
406-30	30"		
406-36	36"		
406-42	42"		

2 ADJUSTABLE SHELVES

BMT/Nelson
CASEWORK

 **new england lab**
lab-tested furniture systems

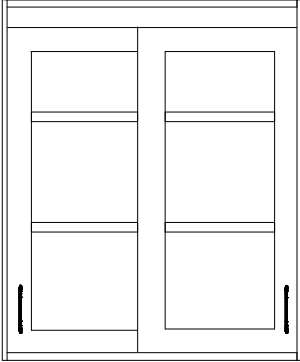
888.635.2080 | newenglandlab.com

Baltimore • Boston • Raleigh • Richmond

WALL CABINET

STANDARD HEIGHTS - 30" , 36" , 48" (ADD AS SUFFIX)

SLIDING GLASS DOOR WALL CABINET



MODEL NUMBER	WIDTH	MODEL NUMBER	WIDTH
407-24	24"	407-48	48"
407-30	30"		
407-36	36"		
407-42	42"		

2 ADJUSTABLE SHELVES

BMT/Nelson
CASEWORK

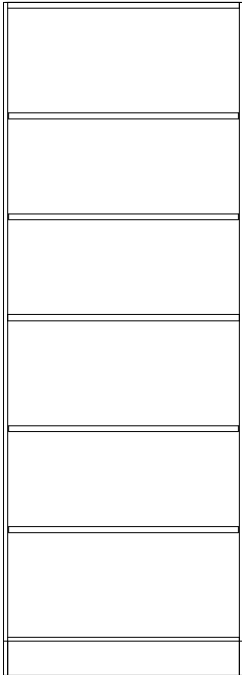
 **newenglandlab**
lab-tested furniture systems

888.635.2080 | newenglandlab.com
Baltimore • Boston • Raleigh • Richmond

TALL CABINET

STANDARD HEIGHTS - 84"

OPEN TALL CABINET



MODEL NUMBER	WIDTH
500-15	15"
500-18	18"
500-21	21"
500-24	24"

MODEL NUMBER	WIDTH
500-30	30"
500-36	36"
500-42	42"
500-48	48"

**1 FIXED SHELF (CENTERED)
4 ADJUSTABLE SHELVES**

BMT/Nelson

CASEWORK

 **new england lab**
lab-tested furniture systems

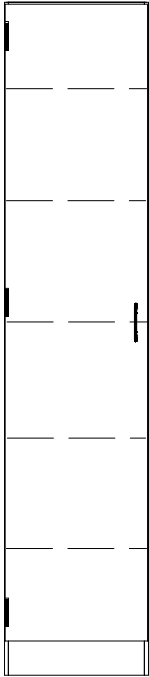
888.635.2080 | newenglandlab.com

Baltimore • Boston • Raleigh • Richmond

TALL CABINET

STANDARD HEIGHT - 84"

1 DOOR TALL CABINET



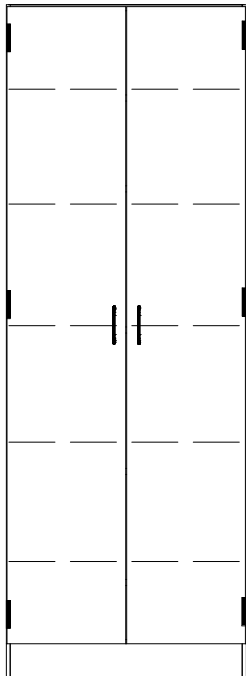
MODEL NUMBER	WIDTH	MODEL NUMBER	WIDTH
501-15	15"		
501-18	18"		
501-21	21"		
501-24	24"		

HINGED LEFT OR RIGHT (ADD "L" OR "R" FOR HINGING)

1 FIXED SHELF (CENTERED)

4 ADJUSTABLE SHELVES

2 DOOR TALL CABINET



MODEL NUMBER	WIDTH	MODEL NUMBER	WIDTH
502-24	24"	502-48	48"
502-30	30"		
502-36	36"		
502-42	42"		

1 FIXED SHELF (CENTERED)

4 ADJUSTABLE SHELVES

BMT/Nelson

CASEWORK

 **new england lab**
lab-tested furniture systems

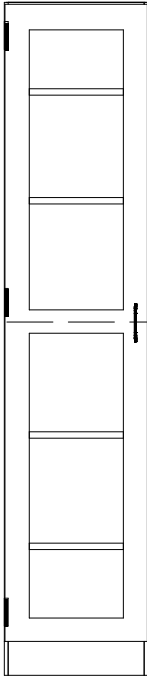
888.635.2080 | newenglandlab.com

Baltimore • Boston • Raleigh • Richmond

TALL CABINET

STANDARD HEIGHTS - 84"

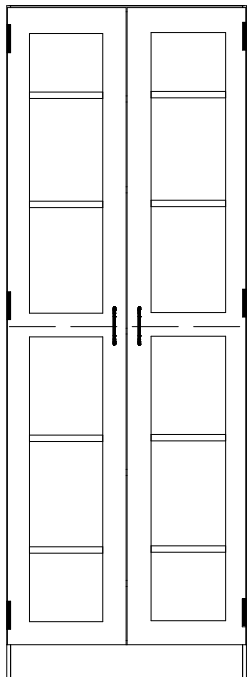
1 GLASS DOOR TALL CABINET



MODEL NUMBER	WIDTH	MODEL NUMBER	WIDTH
503-15	15"		
503-18	18"		
503-21	21"		
503-24	24"		

HINGED LEFT OR RIGHT (ADD "L" OR "R" FOR HINGING)
 1 FIXED SHELF (CENTERED)
 4 ADJUSTABLE SHELVES

2 GLASS DOOR TALL CABINET



MODEL NUMBER	WIDTH	MODEL NUMBER	WIDTH
504-24	24"	504-48	48"
504-30	30"		
504-36	36"		
504-42	42"		

1 FIXED SHELF (CENTERED)
 4 ADJUSTABLE SHELVES

BMT/Nelson

CASEWORK

 **new england lab**
 lab-tested furniture systems

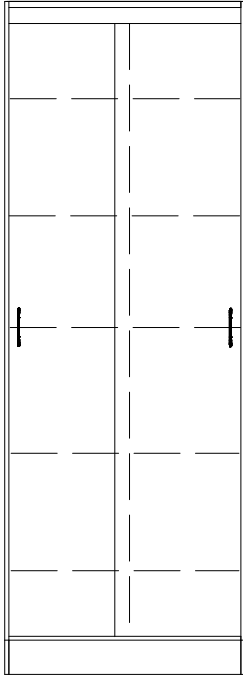
888.635.2080 | newenglandlab.com

Baltimore • Boston • Raleigh • Richmond

TALL CABINET

STANDARD HEIGHTS - 84"

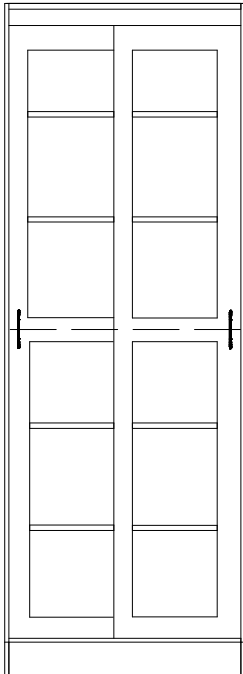
SLIDING DOOR TALL CABINET



MODEL NUMBER	WIDTH	MODEL NUMBER	WIDTH
505-24	24"	505-48	48"
505-30	30"		
505-36	36"		
505-42	42"		

1 FIXED SHELF (CENTERED)
4 ADJUSTABLE SHELVES

SLIDING GLASS DOOR TALL CABINET



MODEL NUMBER	WIDTH	MODEL NUMBER	WIDTH
506-24	24"	506-48	48"
506-30	30"		
506-36	36"		
506-42	42"		

1 FIXED SHELF (CENTERED)
4 ADJUSTABLE SHELVES

BMT/Nelson

CASEWORK

 **new england lab**
lab-tested furniture systems

888.635.2080 | newenglandlab.com

Baltimore • Boston • Raleigh • Richmond