

**ELKAY®**

commercial  
products

**newenglandlab®**  
lab-tested furniture systems

888.635.2080 | [newenglandlab.com](http://newenglandlab.com)

Baltimore • Boston • Raleigh • Richmond

## Commercial Sinks

Discover the  
professional's choice.™



## Stainless Steel Sinks That Set The Industry Standard

When you think of commercial grade stainless steel sinks, the name Elkay most likely comes to mind. After all, we've been manufacturing quality stainless steel sinks for nearly a century. And over those years, our engineering and manufacturing methods have continued to evolve ... and have continued to set the industry standard.

From our foodservice and utility sinks, to our lavatory, scrub and hand wash models, Elkay's ongoing commitment to superior quality, styling and functionality is quite evident. Nearly a century of experience at forming, welding, trimming and polishing goes into every sink we make. And the breadth of our line allows you to select from features, sizes and gauges based on your specific applications and needs. In addition, Elkay stainless steel finishes provide superior bacterial cleanability and are easy to sanitize compared to other sink materials, which is very important in most commercial applications.

From healthcare facilities, schools and stadiums... to restaurants, airports and office buildings, Elkay has the ideal sink for all of the required applications throughout the facility. To find the Elkay sink that's right for you, simply go to the section of this catalog that best describes your type of installation. *Our most popular models are identified in large green type.*



Table of Contents	Page
<b>Foodservice</b>	<b>3-7</b>
<b>Lavatory</b>	<b>8-12</b>
<b>Scrub and Hand wash</b>	<b>13-24</b>
<b>Service and Utility</b>	<b>25-30</b>
<b>Classroom</b>	<b>31-38</b>
<b>General Use</b>	<b>39-47</b>
<b>Custom</b>	<b>48-50</b>
<b>Faucets</b>	<b>51-52</b>
<b>Fittings / Accessories</b>	<b>53-57</b>
<b>Scullery Non Standard Hole Configurations</b>	<b>58-59</b>



Elkay uses only the highest quality 300 Series stainless steel to help ensure long-lasting performance.



Almost 90 years of experience at forming, welding, trimming and polishing goes into every Elkay sink.



## The Elkay Difference

- Furnished with wall hanger and support brackets** to make installation easier
- Uniform satin finish on exposed surfaces** enhances the sinks appearance, provides superior cleanability and makes sanitation easy.
- Coved corners** provide increased styling and making cleaning easier
- High quality, Type 304 stainless steel** won't crack, chip or peel and ensures long-lasting durability
- Underside is sound deadened** for quiet operation

**Note:** Most Elkay commercial stainless steel sinks include the above features (see descriptions specific to each sink family throughout this catalog). Most can also be ordered complete, with an Elkay faucet. In addition to the faucets shown in this catalog, Elkay offers a model for virtually any application. **To learn more please see our full line Commercial Faucets Catalog.**



Member of USBC Green Building Council



For Food Service Application

Visit us at [elkayusa.com](http://elkayusa.com) for most current warranty information.



Elkay **Foodservice Sinks** are designed to withstand the heavy-duty requirements of commercial kitchens in schools, hospitals and retirement homes, as well as restaurants. With our large selection of Weldbilt® and Rigidbilt® free-standing scullery sinks, you can count on Elkay to have the right sink for virtually any commercial kitchen application, including food preparation and dish washing.

## Weldbilt® Single Compartment Scullery Sinks

- Superior quality 14 gauge, Type 304 stainless steel
- Designed to withstand the heavy duty requirements of hotel, restaurant, cafeteria and other commercial kitchens
- Sink compartments are welded 1/4" radius coved corner construction, ground smooth for easy cleaning
- Channel rim design with 2" apron, slanting sanitary turnunder, and inward sloping rim to minimize spillage
- 8" high, full length sloped backsplash resists grime and is 2" thick to allow for plumbing
- Sink polished to a uniform lustrous satin finish
- Drainboard and sink compartments pitched to drain
- 3-1/2" drain opening centered in each compartment
- Stainless steel tubular legs, 1-5/8" O.D. with up to 1" adjustable bullet shaped stainless steel feet
- Carries NSF International certification



WNSF81242



WNSF8124L2



WNSF8136R2



WNSF8130LR2

Model Number	Compartment Size (inches)			Overall Size (inches)		24"	Shipping
	Length	Width	Depth	Length	Width	Drainboard	WT. LBS.
SINGLE COMPARTMENT							
WNSF81242	24	24	14	27	27-1/2	None	80
WNSF8124R2	24	24	14	49-1/2	27-1/2	Right	105
WNSF8124L2	24	24	14	49-1/2	27-1/2	Left	105
WNSF8124LR2	24	24	14	72	27-1/2	Left & Right	190
WNSF81302	30	24	14	33	27-1/2	None	90
WNSF8130R2	30	24	14	55-1/2	27-1/2	Right	115
WNSF8130L2	30	24	14	55-1/2	27-1/2	Left	115
WNSF8130LR2	30	24	14	78	27-1/2	Left & Right	175
WNSF81362	36	24	14	39	27-1/2	None	100
WNSF8136R2	36	24	14	61-1/2	27-1/2	Right	120
WNSF8136L2	36	24	14	61-1/2	27-1/2	Left	120
WNSF8136LR2	36	24	14	84	27-1/2	Left & Right	210

For non-standard hole configuration see page 58-59.

### Optional Detachable Drainboard Model SSD24

Stainless steel, #14 gauge, Type 304. Specially designed cantilever bracket support. Readily removable without tools. Meets sanitary code requirements. Stock size, 24" long. May be used right or left. Ship Wt. 30 lbs.





# Weldbilt® Double Compartment Scullery Sinks


**WNSF8230LR2**

**WNSF8230L2**

**WNSF82422**

**WNSF8260R2**

Model Number	Compartment Size (inches)			Overall Size (inches)		24" Drainboard	Shipping WT. LBS.
	Length	Width	Depth	Length	Width		
DOUBLE COMPARTMENT							
WNSF82302	15	24	14	33	27-1/2	None	95
WNSF8230R2	15	24	14	55-1/2	27-1/2	Right	120
WNSF8230L2	15	24	14	55-1/2	27-1/2	Left	120
WNSF8230LR2	15	24	14	78	27-1/2	Left & Right	200
WNSF82362	18	24	14	39	27-1/2	None	105
WNSF8236R2	18	24	14	61-1/2	27-1/2	Right	130
WNSF8236L2	18	24	14	61-1/2	27-1/2	Left	130
WNSF8236LR2	18	24	14	84	27-1/2	Left & Right	215
WNSF82422	21	24	14	45	27-1/2	None	150
WNSF82482	24	24	14	51	27-1/2	None	120
WNSF8248R2	24	24	14	73-1/2	27-1/2	Right	200
WNSF8248L2	24	24	14	73-1/2	27-1/2	Left	200
WNSF8248LR2	24	24	14	96	27-1/2	Left & Right	225
WNSF82542	27	24	14	57	27-1/2	None	130
WNSF8254R2	27	24	14	79-1/2	27-1/2	Right	215
WNSF8254L2	27	24	14	79-1/2	27-1/2	Left	215
WNSF8254LR2	27	24	14	102	27-1/2	Left & Right	245
WNSF82602	30	24	14	63	27-1/2	None	140
WNSF8260R2	30	24	14	85-1/2	27-1/2	Right	225
WNSF8260L2	30	24	14	85-1/2	27-1/2	Left	225
WNSF8260LR2	30	24	14	108	27-1/2	Left & Right	270

For non-standard hole configuration see pages 58-59.

## Weldbilt® Triple Compartment Scully Sinks



WNSF8345LR4

Model Number	Compartment Size (inches)			Overall Size (inches)		24” Drainboard	Shipping WT. LBS.
	Length	Width	Depth	Length	Width		
TRIPLE COMPARTMENT							
WNSF83454	15	24	14	48	27-1/2	None	125
WNSF8345R4	15	24	14	70-1/2	27-1/2	Right	150
WNSF8345L4	15	24	14	70-1/2	27-1/2	Left	150
WNSF8345LR4	15	24	14	93	27-1/2	Left & Right	240
WNSF83544	18	24	14	57	27-1/2	None	140
WNSF8354R4	18	24	14	79-1/2	27-1/2	Right	170
WNSF8354L4	18	24	14	79-1/2	27-1/2	Left	170
WNSF8354LR4	18	24	14	102	27-1/2	Left & Right	255
WNSF83604	20	24	14	63	27-1/2	None	160
WNSF8360LR4	20	24	14	108	27-1/2	Left & Right	280
WNSF83724	24	24	14	75	27-1/2	None	230
WNSF8372R4	24	24	14	97-1/2	27-1/2	Right	255
WNSF8372L4	24	24	14	97-1/2	27-1/2	Left	255
WNSF8372LR4	24	24	14	120	27-1/2	Left & Right	305



WNSF8345L4



WNSF83544



WNSF8372R4

For non-standard hole configuration see page 58-59.

## RIGIDBILT® Scullery Sinks

- 16 gauge Type 304 stainless steel
- Large die-drawn sink compartments pitched to drain
- Seamless drawn 3-1/2" radius coved corners
- Exposed surfaces blended into a lustrous satin finish
- Steel channel reinforced drainboards have a conical shaped pitch for drainage
- Optional undercoating provides a sound and condensation barrier
- 8" high, full length backsplash with 45° slope top to resist dirt and grime
- Backsplash is 2" thick to allow for plumbing
- Channel rim design with 1" apron, has inward sloping rim to minimize spillage
- 3-1/2" drain opening centered in each compartment
- Stainless steel tubular legs with cross-brace supports, 1-5/8" O.D. with up to 1" adjustable bullet shaped stainless steel feet
- Carries NSF International certification



RNSF8236LR2



RNSF82362



RNSF8118LR2



RNSF83544



RNSF8354LR4

Model Number	Compartment Size (inches)			Overall Size (inches)		18” Drainboard	Shipping WT. LBS.
	Length	Width	Depth	Length	Width		
SINGLE COMPARTMENT							
RNSF81182	18	24	12-3/4	27	29-3/4	None	89
RNSF8118LR2	18	24	12-3/4	57	29-3/4	Left & Right	127
RNSF81242	24	24	12-3/4	33	29-3/4	None	95
RNSF8124LR2	24	24	12-3/4	63	29-3/4	Left & Right	149
DOUBLE COMPARTMENT							
RNSF82362	18	24	12-3/4	47-1/4	29-3/4	None	129
RNSF8236LR2	18	24	12-3/4	77-1/4	29-3/4	Left & Right	174
RNSF82482	24	24	12-3/4	59-1/2	29-3/4	None	157
RNSF8248LR2	24	24	12-3/4	89-1/4	29-3/4	Left & Right	200
TRIPLE COMPARTMENT							
RNSF83544	18	24	12-3/4	67-1/2	29-3/4	None	168
RNSF8354LR4	18	24	12-3/4	97-1/2	29-3/4	Left & Right	211
RNSF83724	24	24	12-3/4	85-1/2	29-3/4	Left	193
RNSF8372LR4	24	24	12-3/4	115-1/2	29-3/4	Left & Right	239

For non-standard hole configuration see page 58-59.



Elkay **Lavatory Sinks** for wash-up applications are available in a variety of styles and sizes. Select from rectangular, oval and wheelchair accessible models, all crafted from Type 304 stainless steel in the Elkay tradition. Elkay's lavatory product offering also includes stainless steel multi-station urinals that are ideal for men's commercial restrooms in high-traffic facilities, such as stadiums and schools.





ELV2219SACC

## Rectangular Compartment Wash-Up Lavatory Sinks

- 18 gauge, Type 304 stainless steel
- 1-3/4" coved corners
- 2-1/2" high backsplash
- 2-1/2" apron front and sides
- Front and side decks with raised rim
- Exposed surfaces hand-blended to a uniform lustrous satin finish
- Sound absorbing pads applied to dampen sound
- Rear centered outlet
- 1-5/8" drain opening
- Furnished with wall hanger and integral stainless steel support brackets
- Meets ADA requirements
- Carries NSF International certification



ELV2219SACMC



ELV2219CS3



ELVWO2219SACC



ELVWO2219CS3

Model Number	Package Detail*				Shipping WT. LBS.
	Faucet	Handle	Power	Mixing Valve	
ELV2219SACC	LKB721C	Sensor	AC/Battery	-	24
ELV2219SACMC	LKB721C	Sensor	AC/Battery	Mechanical	25
ELV2219SACTMC	LKB721C	Sensor	AC/Battery	Thermostatic	26
ELV22191	Sink Only - 1 faucet hole				16
ELV22193	Sink Only - (3) 1-1/2" faucet holes on 4" centers				16
ELV2219CS3	Sink Only - (3) 1-1/4" faucet holes on 2" centers				16
WITH OVERFLOW					
ELVWO2219SACC	LKB721C	Sensor	AC/Battery	-	25
ELVWO2219SACMC	LKB721C	Sensor	AC/Battery	Mechanical	26
ELVWO2219SACTMC	LKB721C	Sensor	AC/Battery	Thermostatic	27
ELVWO22191	Sink Only - 1 faucet hole				17
ELVWO22193	Sink Only - (3) 1-1/2" faucet holes on 4" centers				17
ELVWO2219CS3	Sink Only - (3) 1-1/4" faucet holes on 2" centers				17

### Dimensions for all listed units (inches)

OVERALL SIZE		BASIN		
LENGTH	WIDTH	LENGTH	WIDTH	DEPTH
22	19	16	11-1/2	5-1/2

\* Refer to pages 51-52 for complete descriptions of faucets and mixing valves.

Oval Compartment  
Wash-Up Lavatory Sinks

- 18 gauge, Type 304 stainless steel.
- Anti-splash rim
- 5-1/2" high Backsplash
- 2" wide Apron
- Exposed surfaces hand blended to a uniform lustrous satin finish
- Undercoated for maximum sound deadening
- 1-5/8" drain opening
- Furnished with stainless steel wall support brackets
- Meets ADA requirements



ELV18173

Model Number	Description	Shipping WT. LBS.
ELV18173	Sink Only - (3) 1-1/2" faucet holes on 4" centers	17
ELV1817CS3	Sink Only - (3) 1-1/4" faucet holes on 2" centers	17

Dimensions for all listed units (inches)				
OVERALL SIZE		BASIN		
LENGTH	WIDTH	LENGTH	WIDTH	DEPTH
18	17	13-5/8	10-1/8	5-13/16



ELV1817CS3

## Wheelchair Wash-Up Lavatory Sinks



WCL1923OSDC

- 18 gauge, Type 304 stainless steel
- Uniform lustrous satin finish
- 1-3/4" coved corners
- 2-1/2" apron, front and sides
- 2-1/2" high backsplash
- Wide top deck with raised rim
- Sound absorbing pads applied to dampen sound
- Rear centered outlet
- 1-5/8" drain opening
- Sinks with overflow include LKAD174 drain
- Sinks without overflow include LKAD174LO drain
- Furnished with wall hangers and integral stainless steel support brackets
- Meets ADA requirements
- Carries NSF International certification



WCL1923OSDSBMC



WCL1923OSD3



WCLWO1923OSDSBTMC



WCLWO1923OSD3

Model Number	Package Detail*				Shipping WT. LBS.
	Faucet	Handle	Power	Mixing Valve	
WCL1923OSDC	LKD232SBH5C	5" Wristblade	-	-	22
WCL1923OSDSACC	LKB721C	Sensor	AC/Battery	-	25
WCL1923OSDSACMC	LKB721C	Sensor	AC/Battery	Mechanical	26
WCL1923OSDSACTMC	LKB721C	Sensor	AC/Battery	Thermostatic	27
WCL1923OSD1	Sink Only - 1 faucet hole				17
WCL1923OSD3	Sink Only - (3) 1-1/2" faucet holes on 4" centers				17
WITH OVERFLOW					
WCLWO1923OSDC	LKD232SBH5C	5" Wristblade	-	-	24
WCLWO1923OSDSACC	LKB721C	Sensor	AC/Battery	-	27
WCLWO1923OSDSACMC	LKB721C	Sensor	AC/Battery	Mechanical	28
WCLWO1923OSDSACTMC	LKB721C	Sensor	AC/Battery	Thermostatic	29
WCLWO1923OSD1	Sink Only - 1 faucet hole				19
WCLWO1923OSD3	Sink Only - (3) 1-1/2" faucet holes on 4" centers				19

### Dimensions for all listed units (inches)

OVERALL SIZE		BASIN		
LENGTH	WIDTH	LENGTH	WIDTH	DEPTH
19	23	13-1/2	16	4

\* Refer to pages 51-52 for complete descriptions of faucets and mixing valves.

## Multiple Station Urinals With Exposed Flush Pipe

- 14 gauge, Type 304 stainless steel
- Welded seamless 1/4" covered corners
- Full length sloping backsplash **with flush pipe**
- 1-1/2" wide top channel rims with 2" flat front apron
- Slanted front
- Exposed surfaces polished to a satin finish
- Undercoated for maximum sound deadening
- Furnished with continuous length wall hanger and integral stainless steel mounting brackets
- LK177 strainer included
- Will not crack, chip or discolor
- Easy to clean and sanitize
- Designed for use with any water control-flush valve, time valve, or tank
- Watercontrol valve and trap not included


**EU4814C**

Model Number	Overall Size (inches)			Backsplash Height (inches)	No. of Drains	Shipping WT. LBS.
	Length	Width	Depth			
<b>EU4814C</b>	48	14	8	8	1	61
<b>EU6014C</b>	60	14	8	8	1	71

## Multiple Station Urinals With Integral Hood

- Same features as above but with integral hood to conceal flush pipe


**EUH4814C**

Model Number	Overall Size (inches)			Backsplash Height (inches)	No. of Drains	Shipping WT. LBS.
	Length	Width	Depth			
<b>EUH4814C</b>	48	14	8	8	1	67
<b>EUH6014C</b>	60	14	8	8	1	75



Elkay **Scrub and Hand Wash Sinks** are designed specifically for healthcare applications, including hospitals, medical clinics, dental facilities and doctor's offices. Our offering consists of surgeon's lavatories, scrub-up sinks and wash sinks, including a variety of models equipped with sensor faucets, or knee and foot pedal valves, for the ultimate in hands-free, sanitary activation. Plus, our stainless steel sinks provide superior bacterial cleanability compared to other materials.



## Surgeon's Lavatory with Instrument Trays

- 16 gauge, Type 304 stainless steel
- Integral instrument trays
- 1-3/4" covered corners
- Exposed surfaces are hand-blended to a uniform lustrous satin finish
- Undercoated for maximum sound deadening
- 2" drain opening
- Models with faucets include LK9 grid drain fitting
- Furnished with stainless steel support brackets
- Mount 1-1/2" from wall
- Easy to clean and sanitize
- Will not crack, chip or discolor



ESLV2820W4C

Model Number	Package Detail*				Shipping WT. LBS.
	Faucet	Handle	Power	Mixing Valve	
<b>ESLV2820W4C</b>	LK800GN05T4	4" Wristblade	-	-	37
<b>ESLV2820W6C</b>	LK800GN05T6	6" Wristblade	-	-	37
<b>ESLV2820SACC</b>	LKB721C	Sensor	AC/Battery	-	39
<b>ESLV2820SACMC</b>	LKB721C	Sensor	AC/Battery	Mechanical	40
<b>ESLV2820SACTMC</b>	LKB721C	Sensor	AC/Battery	Thermostatic	41
<b>ESLV2820FC</b>	LK396A	LK398C	Foot	-	42
<b>ESLV2820KC</b>	LK396A	LK397C	Knee	-	47
<b>ESLV28201</b>	Sink Only - 1 faucet hole				30
<b>ESLV28203</b>	Sink Only - (3) 1-1/2" faucet holes on 4" centers				30

Dimensions for all listed units (inches)							
OVERALL SIZE		BASIN SIZE			INSTRUMENT TRAY SIZE		
LENGTH	WIDTH	LENGTH	WIDTH	DEPTH	LENGTH	WIDTH	DEPTH
28	20	14	12	7-1/2	3-3/4	14	1-1/2



ESLV28203



ESLV2820SACMC



ESLV2820KC



ESLV2820FC

\* Refer to pages 51-52 for complete descriptions of faucets and mixing valves.

## Wall Scrub-Up Sinks

- 14 gauge, Type 304 stainless steel
- 1-3/4" radius coved corners
- 1-1/2" rolled rims
- Full length 6" high backsplash
- Exposed surfaces are hand-blended to a uniform lustrous satin finish
- Undercoated for maximum sound deadening
- 3-1/2" drain opening
- Furnished with wall hanger and stainless steel support brackets
- Easy to clean and sanitize
- Will not crack, chip or discolor



EWS2520W4C



EWS25202



EWS2520FC



EWS3120KC



EWS3120SBC

Model Number	Package Detail*				Shipping WT. LBS.
	Faucet	Handle	Power	Mixing Valve	
25 INCH SINKS					
EWS2520W4C	LK940GN08T4H	4" Wristblade	-	-	46
EWS2520W6C	LK940GN08T6H	6" Wristblade	-	-	47
EWS2520SACC	LKB722C	Sensor	AC/Battery	-	50
EWS2520SACMC	LKB722C	Sensor	AC/Battery	Mechanical	51
EWS2520SACTMC	LKB722C	Sensor	AC/Battery	Thermostatic	52
EWS2520FC	LK395A	LK398C	Foot	-	52
EWS2520KC	LK395A	LK397C	Knee	-	57
EWS25201	Sink Only - 1 faucet hole				40
EWS25202	Sink Only - 2 faucet holes				40

### Dimensions for all listed units (inches)

OVERALL SIZE		BASIN		
LENGTH	WIDTH	LENGTH	WIDTH	DEPTH
25	19-1/2	22	16	10-1/2

Model Number	Package Detail*				Shipping WT. LBS.
	Faucet	Handle	Power	Mixing Valve	
31 INCH SINKS					
EWS3120W4C	LK940GN08T4H	4" Wristblade	-	-	56
EWS3120W6C	LK940GN08T6H	6" Wristblade	-	-	57
EWS3120SACC	LKB722C	Sensor	AC/Battery	-	60
EWS3120SACMC	LKB722C	Sensor	AC/Battery	Mechanical	61
EWS3120SACTMC	LKB722C	Sensor	AC/Battery	Thermostatic	62
EWS3120FC	LK395A	LK398C	Foot	-	62
EWS3120KC	LK395A	LK397C	Knee	-	67
EWS31201	Sink Only - 1 faucet hole				50
EWS31202	Sink Only - 2 faucet holes				50

### Dimensions for all listed units (inches)

OVERALL SIZE		BASIN		
LENGTH	WIDTH	LENGTH	WIDTH	DEPTH
31	19-1/2	28	16	10-1/2

\* Refer to pages 51-52 for complete descriptions of faucets and mixing valves.

## Hand Wash-Up Wall Mount

- Type 304 stainless steel basin
- 1-3/4" radius coved corners
- Full length 7" high backsplash with 45° angle sloped top
- Exposed surfaces have a brushed finish
- 2" drain opening
- Models with faucets include LK8 grid drain fitting with 1-1/2" O.D. tailpiece and LK500 satin chrome cast brass "P" trap with clean out
- Will not chip, crack or discolor
- Easy to clean and sanitize
- Furnished with hanger and integral stainless steel support brackets
- Carries NSF International certification



CHS1716C



CHS1716SACC



CHS17162

Model Number	Package Detail*				Shipping WT. LBS.
	Faucet	Handle	Power	Mixing Valve	
<b>CHS1716C</b>	LK940GN04L2H	2" Lever	-	-	18
<b>CHS1716SACC</b>	LKB722C	Sensor	AC/Battery	-	23
<b>CHS1716SACMC</b>	LKB722C	Sensor	AC/Battery	Mechanical	24
<b>CHS1716SACTMC</b>	LKB722C	Sensor	AC/Battery	Thermostatic	25
<b>CHS17161</b>	Sink Only - 1 faucet hole				12
<b>CHS17162</b>	Sink Only - 2 faucet holes				12

Dimensions for all listed units (inches)				
OVERALL SIZE		BASIN		
LENGTH	WIDTH	LENGTH	WIDTH	DEPTH
16-3/4	15-1/2	12	9-1/4	6

### CHS Model Packages on pages 16-18 include:



LK8 Drain Fitting



LK500 P-Trap

\* Refer to pages 51-52 for complete descriptions of faucets and mixing valves.



CHS1716LRS2

## Hand Wash-Up with Side Splashes

- Type 304 stainless steel basin
- 1-3/4" radius coved corners
- Full length 7" high backsplash with 45° angle sloped top
- Exposed surfaces have a brushed finish
- 2" drain opening
- Models with faucets include LK8 grid drain fitting with 1-1/2" O.D. tailpiece and LK500 satin chrome cast brass "P" trap with clean out
- Will not chip, crack or discolor
- Easy to clean and sanitize
- Furnished with hanger and integral stainless steel support brackets
- Carries NSF International certification



CHS1716LRSC

Model Number	Package Detail*				Shipping WT. LBS.
	Faucet	Handle	Power	Mixing Valve	
<b>CHS1716LRSC</b>	LK940GN04L2H	2" Lever	-	-	21
<b>CHS1716LRSSACC</b>	LKB722C	Sensor	AC	-	25
<b>CHS1716LRSSACMC</b>	LKB722C	Sensor	AC	Mechanical	26
<b>CHS1716LRSSACTMC</b>	LKB722C	Sensor	AC	Thermostatic	27
<b>CHS1716LRS1</b>	Sink Only - 1 faucet hole				14
<b>CHS1716LRS2</b>	Sink Only - 2 faucet holes				14

### Dimensions for all listed units (inches)

OVERALL SIZE		BASIN		
LENGTH	WIDTH	LENGTH	WIDTH	DEPTH
16-3/4	15-1/2	12	9-1/4	6



CHS1716LRSSACC

\* Refer to pages 51-52 for complete descriptions of faucets and mixing valves.

## Hand Wash-Up Pedestal Mount

- Type 304 stainless steel basin
- 1-3/4" radius coved corners
- Full length 7" high backsplash with 45° angle sloped top
- Exposed surfaces have a brushed finish
- Will not chip, crack or discolor
- Easy to clean and sanitize
- 2" drain opening
- Includes LK8 grid drain fitting with 1-1/2" O.D. tailpiece and LK500 satin chrome cast brass "P" trap with clean out
- 36" floor to rim
- Carries NSF International certification



CHSP1716C



CHSP1716SACC



CHSP1716LRSC

Model Number	Package Detail*				Shipping WT. LBS.
	Faucet	Handle	Power	Mixing Valve	
WITHOUT SIDE SPLASHES					
CHSP1716C	LK395A	LK399A	Foot	-	20
CHSP1716SACC	LKB722C	Sensor	AC	-	25
CHSP1716SACMC	LKB722C	Sensor	AC	Mechanical	26
CHSP1716SACTMC	LKB722C	Sensor	AC	Thermostatic	27
WITH SIDE SPLASHES					
CHSP1716LRSC	LK395A	LK399A	Foot	-	22
CHSP1716LRSSACC	LKB722C	Sensor	AC	-	27
CHSP1716LRSSACMC	LKB722C	Sensor	AC	Mechanical	28
CHSP1716LRSSACTMC	LKB722C	Sensor	AC	Thermostatic	29

Dimensions for all listed units (inches)				
OVERALL SIZE		BASIN		
LENGTH	WIDTH	LENGTH	WIDTH	DEPTH
16-3/4	15-1/2	12	9-1/4	6

\* Refer to pages 51-52 for complete descriptions of faucets and mixing valves.





CHSB1716C

## Hand Wash-Up Wall Mount

- Type 304 stainless steel basin
- 1-3/4" radius coved corners
- Full length 7" high backsplash with 45° angle sloped top
- Inverted edge on sink rim
- Exposed surfaces have brushed finish
- 2" drain opening
- Model with faucet includes LKBB drain
- Will not chip, crack or discolor
- Easy to clean and sanitize
- Furnished with hanger support bracket
- Carries NSF International certification



Model Number	Package Detail		Shipping WT. LBS.
	Faucet	Handle	
<b>CHSB1716C</b>	LKB400	2" Lever	13.5
<b>CHSB17162</b>	Sink Only - 2 faucet holes		11.0



CHSB17162

### Dimensions for all listed units (inches)

OVERALL SIZE		BASIN		
LENGTH	WIDTH	LENGTH	WIDTH	DEPTH
16-3/4	15-1/2	12	9-1/4	6

\* Refer to pages 51-52 for complete descriptions of faucets and mixing valves.

## Single Station Wash Sink with Right Drainboard

- 14 gauge, Type 304 stainless steel
- Right hand 30" drainboard
- 1/4" radius vertical and horizontal coved corners with 1-1/2" rolled rims
- Full length 8" backsplash with 45° sloped top
- Exposed surfaces are hand-blended to a uniform lustrous satin finish
- Will not crack, chip or discolor
- Easy to clean and sanitize
- 3-1/2" drain opening
- Furnished with wall hanger and stainless steel support brackets
- Models with faucets include LK18B stainless steel grid drain with 1-1/2" O.D. tailpiece
- Carries NSF International certification
- Model ESS4220R is **less backsplash**



ESS4924RW4C

Model Number	Package Detail*				Shipping WT. LBS.
	Faucet	Handle	Power	Mixing Valve	
WITH BACKSPLASH					
ESS4924RW4C	LK940GN08T4H	4" Wrist Blade	-	-	116
ESS4924RW6C	LK940GN08T6H	6" Wrist Blade	-	-	117
ESS4924RSACC	LKB722C	Sensor	AC	-	120
ESS4924RSACMC	LKB722C	Sensor	AC	Mechanical	121
ESS4924RSACTMC	LKB722C	Sensor	AC	Thermostatic	122
ESS4924RFC	LK395A	LK398C	Foot	-	122
ESS4924RKC	LK395A	LK397C	Knee	-	127
ESS4924R1		Sink Only – 1 faucet hole			110
ESS4924R2		Sink Only – 2 faucet holes			110
WITHOUT BACKSPLASH					
ESS4220R	Sink				100



ESS4924RFC



ESS4924RKC



ESS4924SACC



ESS4220R

### Dimensions for all ESS4924 models (inches)

OVERALL SIZE		COMPARTMENT SIZE		
LENGTH	WIDTH	LENGTH	WIDTH	DEPTH
49-1/2	24	18	20-1/2	10

### Dimensions for ESS4220R (inches)

42	20	17	17	6
----	----	----	----	---

\* Refer to pages 51-52 for complete descriptions of faucets and mixing valves.

## Multiple Station Wash Sinks

- 14 gauge, Type 304 stainless steel
- 1/4" coved corners
- 1-1/2" wide inward sloping top channel rims, with 2" flat apron
- Full length 10" high backsplash
- Square rim corners
- Slanted front
- 3-1/2" drain opening
- LK18B drain included on "C" models
- Exposed surfaces are hand-blended to a uniform lustrous finish
- Furnished with wall hangers and stainless steel support brackets
- Will not chip, crack or discolor



EWMA4820C



EWMA4820SACMC



EWMA4820SBTMC



EWMA6020C



EWMA6020SACC

Model Number	Package Detail*				Shipping WT. LBS.
	Faucet	Handle	Power	Mixing Valve	
48 INCH TWO STATION					
EWMA4820C	(2) LK940GN08T4H	4" Wristblade	-	-	87
EWMA4820SACC	(2) LKB722C	Sensor	AC	-	93
EWMA4820SACMC	(2) LKB722C	Sensor	AC	(2) Mechanical	94
EWMA4820SACTMC	(2) LKB722C	Sensor	AC	(2) Thermostatic	95
EWMA48202	Sink Only - 2 faucet holes				75
EWMA48204	Sink Only - 4 faucet holes				75

### Dimensions for all listed units (inches)

OVERALL SIZE		
LENGTH	WIDTH	DEPTH
48	20	8

Model Number	Package Detail*				Shipping WT. LBS.
	Faucet	Handle	Power	Mixing Valve	
60 INCH THREE STATION					
EWMA6020C	(3) LK940GN08T4H	4" Wristblade	-	-	106
EWMA6020SACC	(3) LKB722C	Sensor	AC	-	114
EWMA6020SACMC	(3) LKB722C	Sensor	AC	(3) Mechanical	115
EWMA6020SACTMC	(3) LKB722C	Sensor	AC	(3) Thermostatic	116
EWMA60203	Sink Only - 3 faucet holes				89
EWMA60206	Sink Only - 6 faucet holes				89

### Dimensions for all listed units (inches)

OVERALL SIZE		
LENGTH	WIDTH	DEPTH
60	20	8

\* Refer to pages 51-52 for complete descriptions of faucets and mixing valves.



EWMA7220SACC

Model Number	Package Detail*				Shipping WT. LBS.
	Faucet	Handle	Power	Mixing Valve	
72 INCH THREE STATION					
EWMA7220C	(3) LK940GN08T4H	4" Wristblade	-	-	119
EWMA7220SACC	(3) LKB722C	Sensor	AC	-	127
EWMA7220SACMC	(3) LKB722C	Sensor	AC	(3) Mechanical	128
EWMA7220SACTMC	(3) LKB722C	Sensor	AC	(3) Thermostatic	129
EWMA72203	Sink Only - 3 faucet holes				102
EWMA72206	Sink Only - 6 faucet holes				102

Dimensions for all listed units (inches)			
OVERALL SIZE			
LENGTH	WIDTH	DEPTH	
72	20	8	



EWMA96208

Model Number	Package Detail*				Shipping WT. LBS.
	Faucet	Handle	Power	Mixing Valve	
96 INCH FOUR STATION					
EWMA9620C	(4) LK940GN08T4H	4" Wristblade	-	-	152
EWMA9620SACC	(4) LKB722C	Sensor	AC	-	163
EWMA9620SACMC	(4) LKB722C	Sensor	AC	(4) Mechanical	164
EWMA9620SACTMC	(4) LKB722C	Sensor	AC	(4) Thermostatic	165
EWMA96204	Sink Only - 4 faucet holes				130
EWMA96208	Sink Only - 8 faucet holes				130

Dimensions for all listed units (inches)			
OVERALL SIZE			
LENGTH	WIDTH	DEPTH	
96	20	8	

Note:

LK395A spout with knee or foot pedal valves can also be used with all EWMA stainless steel sinks. See page 47.

\* Refer to pages 51-52 for complete descriptions of faucets and mixing valves.



EWSF39026SACC



EWSFAD13620SACC

## Sensor-Operated Wash Sinks

- 16 gauge, Type 304 stainless steel
- Slant-front design
- Keyed access door(s) to hide plumbing
- Coved corners
- 4" high full length backsplash
- Undercoated for maximum sound deadening
- Wall hanger
- Full enclosure
- Exposed surfaces are polished to a uniform lustrous finish
- 3-1/2" drain opening
- Models with faucets include LK18B drain



Removable Clear Acrylic Compartment Partition

Model Number	Overall Size (inches)			Package Detail*				Shipping WT. LBS.
	Length	Width	Depth	Faucet	Handle	Power	Mixing Valve	
SINGLE COMPARTMENT								
EWSF13026SACC	30	23	26	LKB721C	Sensor	AC	Manual	96
EWSF130261	30	23	26	Sink Only - 1 faucet hole				85
SINGLE COMPARTMENT ADA COMPLIANT								
EWSFAD13620SACC	36	20	24	LKB722C	Sensor	AC	-	115
EWSFAD136201	36	23	26	Sink Only - 1 faucet hole				105
DOUBLE COMPARTMENT								
EWSF26026SACC	60	23	26	(2) LKB721C	Sensor	AC	Manual	172
EWSF260262	60	23	24	Sink Only - 2 faucet holes				150
TRIPLE COMPARTMENT								
EWSF39026SACC	90	23	26	(3) LKB721C	Sensor	AC	Manual	243
EWSF390263	90	23	26	Sink Only - 3 faucet holes				210



EWSF130261

Keyed access doors



EWSF26026SACC

† These models are ADA compliant.

\* Refer to pages 51-52 for complete descriptions of faucets and mixing valves.



## Knee-Operated Wash Sinks

- 16 gauge, Type 304 stainless steel
- Knee operated water and soap push panels
- Latched front panel
- User adjustable water temperature valve
- 4" high full length backsplash
- Coved corners
- Full length backsplash
- Undercoated for maximum sound deadening
- Wall hanger
- Full enclosure
- Exposed surfaces are polished to a satin finish
- 3-1/2" drain opening
- Double and triple compartment models include removable clear acrylic partitions



EWSF39026KWSC

Model Number	Package Detail		Shipping WT. LBS.
	With Knee Operated		
EWSF13026KWSC	Soap & Water	-	85
EWSF13026KWC	-	Water	85

Dimensions for all listed units (inches)		
OVERALL SIZE		
LENGTH	WIDTH	DEPTH
30	23	22



EWSF13026KWSC

Model Number	Package Detail		Shipping WT. LBS.
	With Knee Operated		
EWSF26026KWSC	Soap & Water	-	150
EWSF26026KWC	-	Water	150

Dimensions for all listed units (inches)		
OVERALL SIZE		
LENGTH	WIDTH	DEPTH
60	23	22

Model Number	Package Detail		Shipping WT. LBS.
	With Knee Operated		
EWSF39026KWSC	Soap & Water	-	210
EWSF39026KWC	-	Water	210

Dimensions for all listed units (inches)		
OVERALL SIZE		
LENGTH	WIDTH	DEPTH
90	23	22



EWSF26026KWSC

\* Refer to pages 51-52 for complete descriptions of faucets and mixing valves.



Elkay **Service and Utility Sinks** are ideal for the heavy janitorial requirements in schools, hospitals, industrial facilities and office buildings. Designed to withstand abuse from buckets, mops and other maintenance equipment, Elkay service sinks will provide years of service. Our offering in this category also includes the **Sturdibilt®** line of scullery sinks, making our service and utility lineup one of the most versatile in the industry!

## Wall Service Sinks

- 14 gauge, Type 304 stainless steel
- 1-3/4" coved corners
- 1-1/2" rolled rims
- Full length 12" high backsplash
- Exposed surfaces hand-blended to a uniform lustrous satin finish
- 3-1/2" drain opening
- Furnished with wall hanger and stainless steel support brackets
- Will not crack, chip or discolor
- LK173 cast iron "P" trap standard on "C" models



ESSB2520C



ESS2520C



ESSW2520C



ESS25202

Model Number	Package Detail*			Shipping WT. LBS.
	Faucet	Handle	Spout	
<b>ESS2118C</b>	LK69C	Cross Arm	1 Plain / 1 Threaded Hose Outlet	59
<b>ESS2319C</b>	LK69C	Cross Arm	1 Plain / 1 Threaded Hose Outlet	62
<b>ESS2520C</b>	LK69C	Cross Arm	1 Plain / 1 Threaded Hose Outlet	63
<b>ESSB2118C</b>	LK940BR03L2H	2" Lever	Threaded Hose w/ 3" Bucket Hook	61
<b>ESSB2319C</b>	LK940BR03L2H	2" Lever	Threaded Hose w/ 3" Bucket Hook	65
<b>ESSB2520C</b>	LK940BR03L2H	2" Lever	Threaded Hose w/ 3" Bucket Hook	66
<b>ESSW2118C</b>	LK940BR07L2H	2" Lever	Threaded Hose w/ 7" Bucket Hook	63
<b>ESSW2319C</b>	LK940BR07L2H	2" Lever	Threaded Hose w/ 7" Bucket Hook	67
<b>ESSW2520C</b>	LK940BR07L2H	2" Lever	Threaded Hose w/ 7" Bucket Hook	68
<b>ESS21182</b>	Sink Only - 2 faucet holes			37
<b>ESS23192</b>	Sink Only - 2 faucet holes			41
<b>ESS25202</b>	Sink Only - 2 faucet holes			42

### Dimensions for all 2118 listed units (inches)

OVERALL SIZE		COMPARTMENT SIZE		
LENGTH	WIDTH	LENGTH	WIDTH	DEPTH
21	17-1/2	18	14	12

### Dimensions for all 2319 listed units (inches)

OVERALL SIZE		COMPARTMENT SIZE		
LENGTH	WIDTH	LENGTH	WIDTH	DEPTH
23	18-1/2	20	15	12

### Dimensions for all 2520 listed units (inches)

OVERALL SIZE		COMPARTMENT SIZE		
LENGTH	WIDTH	LENGTH	WIDTH	DEPTH
25	19-1/2	22	16	12

\* Refer to pages 51-52 for complete descriptions of faucets and mixing valves.


**EFS2523C**

## Floor Service Sinks

- 16 gauge, Type 304 stainless steel
- Eliminates high lifting of heavy containers
- Fits into closet corners and limited work spaces
- 1-3/4" covered corners
- Apron on three sides
- Top has 5/32" raised rims
- Exposed surfaces are polished to a lustrous satin finish
- Sound absorbing pads applied to dampen sound
- Furnished with wall hanger and LK43 drain

Model Number	Overall Size (inches)		Compartment Size (inches)			Shipping WT. LBS.
	Length	Width	Length	Width	Depth	
<b>EFS2523C</b>	25	23	20	18	8	42
<b>EFS3321C</b>	33	21	28	16	8	48

## Back and Side Panels For Floor Service Sinks

- For use on EFS model floor sinks
- 18 gauge, Type 304 stainless steel
- 1/2" returns on all sides
- Furnished with concealed wall hangers



Model Number	Overall Size (inches)		Fits Sink Model	Shipping WT. LBS.
	Length	Width		
<b>EFSBP25</b>	25	12	EFS2523C	7
<b>EFSBP33</b>	33	12	EFS3321C	9
<b>EFSSP21</b>	20-3/8	12	EFS3321C	4
<b>EFSSP23</b>	22-3/8	12	EFS2523C	5

Note: Faucets for floor sinks are featured on pages 51-52. Accessories for floor sinks are featured on pages 53-57.

## Sturdibilt® Single Compartment Scullery Sinks

- 14 gauge, Type 304 stainless steel
- Square corner welded compartment construction
- Distinctive channel rim design with 2" apron minimizes spillover
- Straight line styling
- 8" high full length backsplash with 45° slope to resist grime
- 14" deep compartments
- Drainboard and sink compartments pitched to drain
- 3-1/2" drain opening
- Sink polished to a uniform lustrous satin finish
- Sink supported on (4) LK251 stainless steel adjustable tubular legs
- 1-5/8" O.D., with up to 1" adjustable bullet shaped stainless steel feet



SS81242



SS8124L2



SS8130R2



SS8136LR2

Model Number	Compartment Size (inches)			Overall Size (inches)		24" Drainboard	Shipping WT. LBS.
	Length	Width	Depth	Length	Width		
SINGLE COMPARTMENT							
SS81242	24	24	14	27	27-1/2	None	80
SS8124R2	24	24	14	49-1/2	27-1/2	Right	105
SS8124L2	24	24	14	49-1/2	27-1/2	Left	105
SS8124LR2	24	24	14	72	27-1/2	Left & Right	190
SS81302	30	24	14	33	27-1/2	None	90
SS8130R2	30	24	14	55-1/2	27-1/2	Right	115
SS8130L2	30	24	14	55-1/2	27-1/2	Left	115
SS8130LR2	30	24	14	78	27-1/2	Left & Right	175
SS81362	36	24	14	39	27-1/2	None	100
SS8136R2	36	24	14	61-1/2	27-1/2	Right	120
SS8136L2	36	24	14	61-1/2	27-1/2	Left	120
SS8136LR2	36	24	14	84	27-1/2	Left & Right	210

For non-standard hole configuration see pages 58 -59.

### Optional Detachable drainboard Model SSD24

Stainless steel, #14 gauge, Type 304. Specially designed cantilever bracket support. Readily removable without tools. Meets sanitary code requirements. May be used right or left. 24" long. Ship Wt. 30 lbs.





# *Sturdibilt* Double Compartment Scully Sinks



SS82482



SS8236LR2



SS8248L2



SS8260R2

Model Number	Compartment Size (inches)			Overall Size (inches)		24"	Shipping
	Length	Width	Depth	Length	Width	Drainboard	WT. LBS.
DOUBLE COMPARTMENT							
SS82302	15	24	14	33	27-1/2	None	95
SS8230R2	15	24	14	55-1/2	27-1/2	Right	120
SS8230L2	15	24	14	55-1/2	27-1/2	Left	120
SS8230LR2	15	24	14	78	27-1/2	Left & Right	200
SS82362	18	24	14	39	27-1/2	None	105
SS8236R2	18	24	14	61-1/2	27-1/2	Right	130
SS8236L2	18	24	14	61-1/2	27-1/2	Left	130
SS8236LR2	18	24	14	84	27-1/2	Left & Right	215
SS82422	21	24	14	45	27-1/2	None	150
SS82482	24	24	14	51	27-1/2	None	120
SS8248R2	24	24	14	73-1/2	27-1/2	Right	200
SS8248L2	24	24	14	73-1/2	27-1/2	Left	200
SS8248LR2	24	24	14	96	27-1/2	Left & Right	225
SS82542	27	24	14	57	27-1/2	None	130
SS8254R2	27	24	14	79-1/2	27-1/2	Right	215
SS8254L2	27	24	14	79-1/2	27-1/2	Left	215
SS8254LR2	27	24	14	102	27-1/2	Left & Right	245
SS82602	30	24	14	63	27-1/2	None	140
SS8260R2	30	24	14	85-1/2	27-1/2	Right	225
SS8260L2	30	24	14	85-1/2	27-1/2	Left	225
SS8260LR2	30	24	14	108	27-1/2	Left & Right	270

For non-standard hole configuration see pages 58-59.

# Sturdibilt® Triple Compartment Scullery Sinks



SS8354LR4

Model Number	Compartment Size (inches)			Overall Size (inches)		24" Drainboard	Shipping WT. LBS.
	Length	Width	Depth	Length	Width		
TRIPLE COMPARTMENT							
SS83454	15	24	14	48	27-1/2	None	125
★ SS8345R4	15	24	14	70-1/2	27-1/2	Right	150
SS8345L4	15	24	14	70-1/2	27-1/2	Left	150
SS8345LR4	15	24	14	93	27-1/2	Left & Right	240
SS83544	18	24	14	57	27-1/2	None	140
★ SS8354R4	18	24	14	79-1/2	27-1/2	Right	170
★ SS8354L4	18	24	14	79-1/2	27-1/2	Left	170
★ SS8354LR4	18	24	14	102	27-1/2	Left & Right	255
★ SS83604	20	24	14	63	27-1/2	None	160
★ SS8360LR4	20	24	14	108	27-1/2	Left & Right	280
★ SS83724	24	24	14	75	27-1/2	None	230
★ SS8372R4	24	24	14	97-1/2	27-1/2	Right	255
★ SS8372L4	24	24	14	97-1/2	27-1/2	Left	255
★ SS8372LR4	24	24	14	120	27-1/2	Left & Right	305



SS83454



SS8354R4



SS8372L4

For non-standard hole configuration see pages 58-59.



Elkay **Classroom Sinks** provide the versatility and durability required for multitasking in the classroom. Available as **complete packages**, with faucet, Flexi-Guard® Bubbler and strainer included, our classroom sinks are the ideal way to provide hand washing, light clean up and drinking water all in one area.

## Lustertone® Classroom Sinks

- 18 gauge, type 304 nickel bearing stainless steel
- 1-3/4" radius coved corners
- Exposed surfaces hand blended to a lustrous highlighted Lustertone® satin finish
- Underside of sink is fully undercoated
- Recessed bowls and faucet deck
- 3-1/2" drain opening on large bowl
- 2" drain opening on small bowl
- DRKAD models comply with ADA requirements
- Available as sink only or as complete package (with faucet, bubbler and strainer)



†



DRKR3717RC

## Lustertone® Double Bowl Sinks

### Packages include:

- LKD2439C concealed mount faucet; height-10". 45° restricted swing spout with aerator
- LK1141A no-lead Flexi-Guard® bubbler
- LK35 strainer for large bowl
- LK8 grid strainer for small fountain bowl



DRKR3717R4

Model Number	Overall Size (inches)		Each Bowl Size (inches)						Minimum Cabinet Size	Faucet Holes	Shipping WT. LBS.
	L	W	L	W	D	L	W	D			
SINK PACKAGES											
DRKR3717LC	37-1/4	17	9-1/4	12	3-5/8	16	11-1/2	7-5/8	42"	4	27
DRKR3717RC	37-1/4	17	16	11-1/2	7-5/8	9-1/4	12	3-5/8	42"	4	27
† DRKAD3717LC	37-1/4	17	9-1/4	12	3-5/8	16	11-1/2	5-1/2*	42"	4	27
† DRKAD3717RC	37-1/4	17	16	11-1/2	5-1/2*	9-1/4	12	3-5/8	42"	4	27
DRKR3717L	37-1/4	17	9-1/4	12	3-5/8	16	11-1/2	7-5/8	42"	4	18
DRKR3717R	37-1/4	17	16	11-1/2	7-5/8	9-1/4	12	3-5/8	42"	4	18
† DRKAD3717L	37-1/4	17	9-1/4	12	3-5/8	16	11-1/2	5-1/2*	42"	4	18
† DRKAD3717R	37-1/4	17	16	11-1/2	5-1/2*	9-1/4	12	3-5/8	42"	4	18

\* Also available with 6 or 6-1/2 inch bowl depths.



Most classroom sinks featured in this catalog are available with our Quick-Clip® Mounting System. See Elkay Residential Catalog for complete description and ordering information.

Cutout size is 5/8" less than overall size with 1-1/2" radius corners, for all drop-in sinks


**DRKR2217RC**

## Lustertone® Single Bowl, Single Ledge Sinks

### Packages include:

- LKD208513LC single handle, rigid gooseneck spout faucet with aerator; height-13"
- LK1141A no-lead Flexi-Guard® bubbler
- LK35 strainer

### Vandal Resistant Packages include:

- LKDVR208513L faucet with vandal-resistant aerator/handle screws and factory installed anti-rotation pins.
- LKVR1141A no-lead Flexi-Guard® bubbler with anti-rotation feature and metal mouth guard.
- LKVR18 drain fitting with vandal-resistant 3" perforated grid strainer.



†



Model Number	Overall Size (inches)		Bowl Size (inches)			Minimum Cabinet Size	Faucet Holes	Shipping WT. LBS.
	L	W	L	W	D			
SINK PACKAGES								
DRKR2217LC	22	17	16	13-1/2	7-5/8	27"	2	24
DRKR2217RC	22	17	16	13-1/2	7-5/8	27"	2	24
DRKR2217LVRC	22	17	16	13-1/2	7-5/8	27"	2	24
DRKR2217RVRC	22	17	16	13-1/2	7-5/8	27"	2	24
SINK ONLY								
DRKR2217	22	17	16	13-1/2	7-5/8	27"	1 or ②	13
† DRKAD2217	22	17	16	13-1/2	5-1/2*	27"	1 or ②	13

Note: "L" version comes with wing handle on left of faucet.  
"R" version comes with wing handle on right of faucet.


**DRKR2220R4**

## Lustertone® Single Bowl, Rear and Side Ledge Sinks

Model Number	Overall Size (inches)		Bowl Size (inches)			Minimum Cabinet Size	Faucet Holes	Shipping WT. LBS
	L	W	L	W	D			
SINK ONLY								
DRKR2220L	22	19-1/2	16	13-1/2	7-5/8	27"	2, 3 or (4)	14
DRKR2220R	22	19-1/2	16	13-1/2	7-5/8	27"	2, 3 or (4)	14
DRKR2522L	25	22	19	16	7-5/8	30"	2, 3 or (4)	16
DRKR2522R	25	22	19	16	7-5/8	30"	2, 3 or (4)	16
† DRKAD2220L	22	19-1/2	16	13-1/2	5-1/2*	27"	2, 3 or (4)	14
† DRKAD2220R	22	19-1/2	16	13-1/2	5-1/2*	27"	2, 3 or (4)	14
† DRKAD2522L	25	22	19	16	5-1/2*	30"	2, 3 or (4)	16
† DRKAD2522R	25	22	19	16	5-1/2*	30"	2, 3 or (4)	16

† Available in 4 or 6-1/2 inch bowl depths.

○ Indicates standard number of faucet holes.



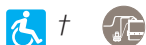
## Lustertone® Single Bowl, Double Ledge Sinks

### DRKR & DRKAD Packages include:

- LKD2439C concealed mount faucet; 45° restricted swing spout with aerator; height-10"
- LK1141A no-lead Flexi-Guard® bubbler
- LK35 strainer

### DRKRC Package includes:

- LKD2432C two-handle concealed mount faucet with swing spout and aerator.
- LK1141A no lead Flexi-Guard® bubbler.
- LKJ35 strainer.



DRKR2517C



DRKRC2220C



DRKAD2517C



DRKAD25224

Model Number	Overall Size (inches)		Bowl Size (inches)			Minimum Cabinet Size	Faucet Holes	Shipping WT. LBS.
	L	W	L	W	D			
SINK PACKAGES								
DRKR2220C	22	19-1/2	13-1/2	16	7-5/8	27"	4	23
DRKR2517C	25	17	16	13-1/2	7-5/8	30"	4	22
DRKR3119C	31	19-1/2	22	16	7-5/8	36"	4	25
DRKRC2220C	22	19-1/2	13-1/2	16	7-5/8	27"	4	23
DRKRC2517C	25	17	16	13-1/2	7-5/8	30"	4	22
DRKRC3119C	31	19-1/2	22	16	7-5/8	36"	4	28
† DRKAD2220C	22	19-1/2	13-1/2	16	5-1/2*	27"	4	23
† DRKAD2517C	25	17	16	13-1/2	5-1/2*	30"	4	22
† DRKAD3119C	31	19-1/2	22	16	5-1/2*	36"	4	25
SINK ONLY								
DRKR2220	22	19-1/2	13-1/2	16	7-5/8	27"	2, 2LM or (4)	14
DRKR2517	25	17	16	13-1/2	7-5/8	30"	2, 2LM or (4)	13
DRKR2522	25	22	16	19	7-5/8	30"	2, 2LM or (4)	16
DRKR3119	31	19-1/2	22	16	7-5/8	36"	2, 2LM or (4)	19
† DRKAD2220	22	19-1/2	13-1/2	16	5-1/2*	27"	2, 2LM or (4)	14
† DRKAD2517	25	17	16	13-1/2	5-1/2*	30"	2, 2LM or (4)	13
† DRKAD2522	25	22	16	19	5-1/2*	30"	2, 2LM or (4)	16
† DRKAD3119	31	19-1/2	22	16	5-1/2*	36"	2, 2LM or (4)	19

† Available in 4 or 6-1/2 inch bowl depths.

○ Indicates standard number of faucet holes.

Cutout size is 5/8" less than overall size with 1-1/2" radius corners, for all drop-in sinks

## Lustertone® Sink Kits and Sets

### DRKR & DRKAD Sink Kits include:

- LKF413945RS faucet; deck mount with remote lever handle; 45° spout rotation; height-11-1/2"
- LK1141A no-lead Flexi-Guard® bubbler
- LK35 strainer

### DRKR & DRKAD Sink Sets include:

- LKD2439C dual handle faucet; deck mount; multi swing spout with restricted flow aerator; height-11"
- LK1141A no-lead Flexi-Guard® bubbler
- LK35 strainer



DRKR23417RC



DRKR24119LC

Model Number	Dimensions (inches)							Minimum Cabinet Size	Faucet Holes	Shipping WT. LBS.
A	B	C	D	E	F	G				
<b>SINK SET KITS</b>										
† DRKR23417LC	19	17	16	11	15	9-1/4	12	42"	4	27
† DRKR23417RC	19	17	16	11	15	9-1/4	12	42"	4	27
†† DRKR24119LC	25	19-1/2	19	16	16	10	14	42"	4	27
†† DRKR24119RC	25	19-1/2	19	16	16	10	14	42"	4	27
<b>ADA COMPLIANT</b>										
† DRKAD23417LC	19	17	16	11	15	9-1/4	12	42"	4	27
† DRKAD23417RC	19	17	16	11	15	9-1/4	12	42"	4	27
†† DRKAD24119LC	25	19-1/2	19	16	16	10	14	42"	4	27
†† DRKAD24119RC	25	19-1/2	19	16	16	10	14	42"	4	27
<b>SINK SETS ONLY</b>										
† DRKR23417L	19	17	16	11	15	9-1/4	12	42"	4	27
† DRKR23417R	19	17	16	11	15	9-1/4	12	42"	4	27
†† DRKR24119L	25	19-1/2	19	16	16	10	14	42"	4	27
†† DRKR24119R	25	19-1/2	19	16	16	10	14	42"	4	27
<b>ADA COMPLIANT</b>										
† DRKAD23417L	19	17	16	11	15	9-1/4	12	42"	4	27
† DRKAD23417R	19	17	16	11	15	9-1/4	12	42"	4	27
†† DRKAD24119L	25	19-1/2	19	16	16	10	14	42"	4	27
†† DRKAD24119R	25	19-1/2	19	16	16	10	14	42"	4	27

† Available in large 7-5/8 and small 3-5/8 inch bowl depths.

†† Available in large 4, 4-1/2, 5, 5-1/2, 6, 6-1/2 and small 3-5/8 inch bowl depths.

Cutout size is 5/8" less than overall size with 1-1/2" radius corners, for all drop-in sinks

## Lustertone® Single Bowl, Triple Ledge Sinks

### Packages include:

- LKF413945RS single-lever Hi-Arc® faucet  
Spout: height-10"; reach- 6-1/2"
- LK1141A no-lead Flexi-Guard® bubbler
- Strainer: DRKR2822-LK35; DRKAD2822-LKAD35



DRKR2822RC



DRKR2822R3

Model Number	Overall Size (inches)		Bowl Size (inches)			Minimum Cabinet Size	Faucet Holes	Shipping WT. LBS.
	L	W	L	W	D			
SINK PACKAGES								
DRKR2822LC	28	22	19	16	7-5/8	33"	3	25
DRKR2822RC	28	22	19	16	7-5/8	33"	3	25
† DRKAD2822LC	28	22	19	16	5-1/2*	33"	3	25
† DRKAD2822RC	28	22	19	16	5-1/2*	33"	3	25
SINK ONLY								
DRKR2822L	28	22	19	16	7-5/8	33"	3	16
DRKR2822R	28	22	19	16	7-5/8	33"	3	16
† DRKAD2822L	28	22	19	16	5-1/2*	33"	3	16
† DRKAD2822R	28	22	19	16	5-1/2*	33"	3	16

\* Also available with 6 or 6-1/2 inch depth.

L & LC models have slotted hole on the left ledge  
R & RC models have slotted hole on the right ledge

Cutout size is 5/8" less than overall size with 1-1/2" radius corners, for all drop-in sinks

PSDKRC2517C



## Pacemaker® Classroom Sinks

- 20 gauge, type 304 nickel bearing stainless steel self-rim design with double ledge
- 1-3/4" radius coved corners
- Exposed surfaces polished to a bright satin finish
- Underside of sink is fully undercoated
- Drain opening size is 3-1/2"
- Recessed bowls and faucet deck
- Standard two faucet holes furnished unless otherwise specified
- PSDKAD models comply with ADA requirements



## PSDKRC2517 Series

### PSDKRC2517 Package includes:

- LKD2085LC single wing handle faucet for hot or cold applications with fixed hi-spout aerator. Outlet height: 8-1/4"
- LK1141A no-lead Flexi-Guard® bubbler
- LKJ35 strainer

### PSDKRC2517 Package includes:

- LKDVR2085LC same as LKDC2085L except with vandal-resistant aerator and handle screw, and factory installed anti-rotation pins
- LKVR1141A same as LK1141A except with anti-rotation feature and metal mouth guard
- LKVR18 drain fitting with vandal-resistant 3" perforated grid strainer

PSDKR2517C



## PSDKRC2517 Series

### PSDKR2517C and PSDKAD2517C Packages include:

- LKD208513LC single handle, rigid gooseneck spout faucet with aerator, 13" high overall
- LK1141A no-lead Flexi-Guard® bubbler
- LK35 strainer

### PSDKR2517VRC and PSDKAD2517VRC Packages include:

- LKDVR208513LC same as LKD208513L except with vandal-resistant aerator and handle screw, and factory installed anti-rotation pins
- LKVR1141A same as LK1141A except with anti-rotation feature and metal mouth guard
- LKVR18 drain fitting with vandal-resistant 3" perforated grid strainer

PSDKR2220L4



Model Number	Overall Size (inches)		Bowl Size (inches)			Minimum Cabinet Size	Faucet Holes	Shipping WT. LBS.
	L	W	L	W	D			
SINK PACKAGES								
PSDKRC2517C	25	17	16	13-1/2	7-1/8	30"	2	16
PSDKRC2517VRC	25	17	16	13-1/2	7-1/8	30"	2	16
SINK PACKAGES								
PSDKR2517VRC	25	17	16	13-1/2	7-1/8	30"	2	23
PSDKR2517C	25	17	16	13-1/2	7-1/8	30"	2	23
† PSDKAD2517C	25	17	16	13-1/2	6-1/2*	30"	2	23
† PSDKAD2517VRC	25	17	16	13-1/2	6-1/2*	30"	2	23
SINK ONLY								
PSDKR2517	25	17	16	13-1/2	7-1/8	30"	②, 2LM or 4	12
† PSDKAD2517	25	17	16	13-1/2	6-1/2	30"	②, 2LM or 4	12
PSDKR2220L	22	19-1/2	16	13-1/2	7-1/8	27"	2, 3 or ④	14
PSDKR2220R	22	19-1/2	16	13-1/2	7-1/8	27"	2, 3 or ④	14

L models have ledge on the left  
R models have ledge on the right

○ Indicates standard number of faucet holes.

Cutout size is 5/8" less than overall size with 1-1/2" radius corners, for all drop-in sinks

## Celebrity® Classroom Sinks

- 20 gauge, type 304 nickel bearing stainless steel
- 3" corner radius
- Single bowl self-rim, with double ledge
- Exposed surfaces polished to a highlighted bright finish
- Underside of sink is fully undercoated
- Drain opening size is 3-1/2"
- Recessed bowl and faucet decks
- Standard two faucet holes furnished unless otherwise specified
- CDKAD models comply with ADA requirements



†



CDKR2517C

## CDKR2517C and CDKAD2517C Series

### CDKR2517C and CDKAD2517C Packages include:

- LKD208513LC single handle, rigid gooseneck spout faucet with aerator, 13" high
- LK1141A no lead Flexi-Guard® bubbler
- LK35 strainer

### CDKR2517VRC and CDKAD2517VRC Packages include:

- LKDVR208513LC same as LKD208513LC except with vandal-resistant aerator and handle screw, and factory installed anti-rotation pins
- LKVR1141A same as LK1141A except with anti-rotation feature and metal mouth guard
- LKVR18 drain fitting with vandal-resistant 3" perforated grid strainer

## CDKRC2517C Series

### CDKRC2517C Package includes:

- LKDC2085LC single wing handle faucet with fixed hi-spout and aerator; height-8-1/4"
- LK1141A no lead Flexi-Guard® bubbler
- LKJ35 strainer



CDKRC2517C

### CDKRC2517VRC Package includes:

- LKDCVR2085LC same as LKDC2085LC except with vandal-resistant aerator and handle screw, and factory installed anti-rotation pins
- LKVR1141A same as LK1141A except with anti-rotation feature and metal mouth guard
- LKVR18 drain fitting with vandal-resistant 3" perforated grid strainer

Model Number	Overall Size (inches)		Bowl Size (inches)			Minimum Cabinet Size	Faucet Holes	Shipping WT. LBS.
	L	W	L	W	D			
SINK PACKAGES								
CDKRC2517C	25	17	15-3/4	14	6-7/8	30"	2	22
CDKRC2517VRC	25	17	15-3/4	14	6-7/8	30"	2	22
CDKR2517C	25	17	15-3/4	14	6-7/8	30"	2	22
CDKR2517VRC	25	17	15-3/4	14	6-7/8	30"	2	22
† CDKAD2517C	25	17	15-3/4	14	6-1/2	30"	2	22
† CDKAD2517VRC	25	17	15-3/4	14	6-1/2	30"	2	22
SINK ONLY								
CDKR2517	25	17	15-3/4	14	6-7/8	30"	②, 2LM or 4	11
† CDKAD2517	25	17	15-3/4	14	6-1/2	30"	②, 2LM or 4	11

○ Indicates standard number of faucet holes.

Cutout size is 5/8" less than overall size with 1-1/2" radius corners, for all drop-in sinks





**Our General Use Sinks** are an ideal choice for those areas that do not require a commercial grade product, but still demand the quality and style that Elkay stainless steel sinks provide. Choose from a wide selection of kitchen and hospitality sinks, in single, double and triple bowl configurations, for the teacher's lounge, kitchenette area and other light-duty applications.

## Lustertone® Undermount General Use Sinks

- 18 gauge, type 304 nickel bearing stainless steel
- Exposed surfaces are hand blended to a lustrous highlighted Lustertone® satin finish
- Heavy duty Sound Guard® undercoating
- Highlighted inside top bowl radius on models with reveal
- Template and countertop mounting clips included with every sink
- 3-1/2" drain opening size (unless otherwise specified)
- **Double** and **Single** bowl models
- PD models have Perfect Drain™ mounting feature



ELUH3118

## Lustertone® Double Bowl Undermount Sinks

Model Number	Overall Size (inches)		Each Bowl Size (inches)						Minimum Cabinet Size	Shipping WT. LBS.
	L	W	L	W	D	L	W	D		
ELUH3118 SERIES										
ELUH3118	30-3/4	18-1/2	13-1/2	16	7-7/8	13-1/2	16	7-7/8	36"	21
ELUH311810	30-3/4	18-1/2	13-1/2	16	10	13-1/2	16	10	36"	23
ELUH3120 SERIES										
ELUH3120L	31-1/4	20-1/2	13-1/2	16	7-7/8	14	18	9-7/8	36"	23
ELUH3120R	31-1/4	20-1/2	14	18	9-7/8	13-1/2	16	7-7/8	36"	23
ELUHAD SERIES										
ELUHAD3118	31-3/4	18-1/2	13-1/2	16	*	13-1/2	16	*	36"	21
ELUHAD3118PD	31-3/4	18-1/2	13-1/2	16	*	13-1/2	16	*	36"	21
ELUHAD3120R	31-1/4	20-1/2	14	18	*	13-1/2	16	*	36"	23
ELUHAD3120RPD	31-1/4	20-1/2	14	18	*	13-1/2	16	*	36"	23
ELUHAD3116	31-1/4	16-1/2	14	14	*	14	14	*	36"	21
ELUHAD3116PD	31-1/4	16-1/2	14	14	*	14	14	*	36"	21
ELUHAD3618	35-3/4	18-1/2	16	16	*	16	16	*	39"	27
ELUHAD4218	41-3/4	18-1/2	19	16	*	19	16	*	45"	27
ELUHAD4618	45-3/4	18-1/4	21	15-3/4	*	21	15-3/4	*	51"	29

L models have small bowl on left  
R models have small bowl on right

\* Available in 4-1/2 to 5-1/2 inch bowl depths.



ELUH3120R



ELUH3120L

For cutout size, use template furnished with sink.  
See specification sheets for detailed information

## CuVerro® Antimicrobial Copper General Use Lavatory Sinks



ELUH9-CU



ELUH1511-CU



LLVR1916-CU



ELVWO2219CS3-CU

- 18 gauge, made with CuVerro® antimicrobial copper
- Registered EPA health claim† for its inherent ability to kill more than 99.9% infectious bacteria†† within 2 hours
- Continuously reduces bacterial contamination††
- Supplements routine cleaning and sanitizing
- Surfaces are hand blended to a lustrous satin finish
- Aesthetically pleasing soft rose hue
- Sound-absorbing pads are applied to dampen sound
- Round and oval models supplied with 1-1/2" drain opening; rectangular models supplied with 1-5/8" drain opening

Model Number	Overall Size (inches)		Each Bowl Size (inches)			Minimum Cabinet Size	Shipping WT. LBS.
	L	W	L	W	D		
UNDERMOUNT WITH REVEAL							
ELUH9-CU	11-3/8 Dia.		9 Dia.		4-3/4	15"	3
ELUH12-CU	14-3/8 Dia.		12 Dia.		6	18"	5
ELUH16-CU	18-3/8 Dia.		16 Dia.		8	24"	13
WITH OVERFLOW							
ELUH12LV-CU	14-3/8 Dia.		12 Dia.		6	18"	6
ELUH16LV-CU	18-3/8 Dia.		16 Dia.		8	24"	13
ELUH1511-CU	18	14	15-1/2	11-3/8	6	21"	10
TOP MOUNT							
WITH OVERFLOW							
LLVR1916-CU	19-5/8	16-11/16	15-1/2	11-3/8	6	24"	12

Model Number	Overall Size (inches)		Each Bowl Size (inches)			Shipping WT. LBS.
	L	W	L	W	D	
WITHOUT OVERFLOW / ADA COMPLIANT						
ELV22191-CU	22	19	16	11-1/2	5-1/2	16
ELV22193-CU	22	19	16	11-1/2	5-1/2	16
ELV2219CS3-CU	22	19	16	11-1/2	5-1/2	16
WITH OVERFLOW						
ELVWO22191-CU	22	19	16	11-1/2	5-1/2	16
ELVWO22193-CU	22	19	16	11-1/2	5-1/2	16
ELVWO2219CS3-CU	22	19	16	11-1/2	5-1/2	16

† The use of CuVerro antimicrobial copper surfaces is a supplement to and not a substitute for standard infection control practices; users must continue to follow all current infection control practices, including those practices related to cleaning and disinfection of environmental surfaces. CuVerro antimicrobial copper has been shown to reduce microbial contamination, but it does not necessarily prevent cross-contamination.

†† Testing demonstrates effective antibacterial activity against Methicillin-Resistant Staphylococcus aureus, Staphylococcus aureus, Enterobacter aerogenes, Pseudomonas aeruginosa, and E. coli 0157:H7.

## CuVerro® Antimicrobial Copper General Use Top Mount Sinks

- 18 gauge, made with CuVerro® antimicrobial copper
- Registered EPA health claim† for its inherent ability to kill more than 99.9% infectious bacteria†† within 2 hours
- Continuously reduces bacterial contamination††
- Supplements routine cleaning and sanitizing
- Surfaces are hand blended to a lustrous satin finish
- Aesthetically pleasing soft rose hue
- Heavy duty Sound Guard® undercoating
- 3-1/2" drain opening

Model Number	Overall Size (inches)		Each Bowl Size (inches)			Shipping WT. LBS.
	L	W	L	W	D	
WITHOUT OVERFLOW						
LR1316-CU	13	16	10	10	7-5/8	9
LR1522-CU	15	22	11-1/2	16	7-5/8	12
LR1722-CU	17	22	13-1/2	16	7-5/8	13
LR1918-CU	19	18	16	11-1/2	7-5/8	13
LR1919-CU	19-1/2	19	16	13-1/2	7-5/8	13
LR2022-CU	19-1/2	22	16	16	7-5/8	13
LR2219-CU	22	19-1/2	18	14	7-5/8	13
LR2222-CU	22	22	19	16	7-5/8	19
DLR172210-CU	17	22	13-1/2	16	10-1/8	15
DLR191910-CU	19-1/2	19	16	13-1/2	10-1/8	14
DLR202210-CU	19-1/2	22	16	16	10-1/8	14
DLR221910-CU	22	19-1/2	18	14	10-1/8	14
ADA COMPLIANT						
LRAD1316-CU	13	16	10	10	*	9
LRAD1522-CU	15	22	11-1/2	16	*	12
LRAD1722-CU	17	22	13-1/2	16	*	13
LRAD1918-CU	19	18	16	11-1/2	*	10
LRAD1919-CU	19-1/2	19	16	13-1/2	*	13
LRAD2022-CU	19-1/2	22	16	16	*	14
LRAD2219-CU	22	19-1/2	18	14	*	13
LRAD2222-CU	22	22	19	16	*	14
LRAD2521-CU	25	21-1/4	21	15-3/4	*	15
LRAD2522-CU	25	22	21	15-3/4	*	15

\* LRAD models are available in 4, 4-1/2, 5, 5-1/2, 6 and 6-1/2 inch bowl depths.



LR1522-CU



DLR172210-CU



LRAD1919-CU

† The use of CuVerro antimicrobial copper surfaces is a supplement to and not a substitute for standard infection control practices; users must continue to follow all current infection control practices, including those practices related to cleaning and disinfection of environmental surfaces. CuVerro antimicrobial copper has been shown to reduce microbial contamination, but it does not necessarily prevent cross-contamination.

†† Testing demonstrates effective antibacterial activity against Methicillin-Resistant Staphylococcus aureus, Staphylococcus aureus, Enterobacter aerogenes, Pseudomonas aeruginosa, and E. coli 0157:H7.

For cutout size, use template furnished with sink.  
See specification sheets for detailed information



ELUH9



ELUH2115

## Lustertone® Single Bowl Undermount Sinks Without Reveal

Model Number	Overall Size (inches)		Bowl Size (inches)			Minimum Cabinet Size	Drain Opening	Shipping WT. LBS.
	L	W	L	W	D			
WITHOUT REVEAL								
ELUH9	11-3/8 Dia.		9 Dia. 4-3/4			15"	2"	7
ELUH12	14-3/8 Dia.		12 Dia. 6			18"	2"	9
ELUH12FB	14-3/8 Dia.		12 Dia. 6			18"	3-1/2"	10
ELUH12LV	14-3/8 Dia.		12 Dia. 6			18"	1-1/2"	6
ELUH16	18-3/8 Dia.		16 Dia. 8			24"	2"	11
ELUH16FB	18-3/8 Dia.		16 Dia. 8			24"	3-1/2"	13
ELUH16LV	18-3/8 Dia.		16 Dia. 8			24"	1-1/2"	13
ELUH1511	18	14	15-1/2	11-3/8	6	21"	1-1/2"	7

## Lustertone® Single Bowl Undermount Sinks With Reveal



ELUH1316



ELUH1511



ELUH281610

Model Number	Overall Size (inches)		Bowl Size (inches)			Minimum Cabinet Size	Drain Opening	Shipping WT. LBS.
	L	W	L	W	D			
WITH REVEAL								
ELUH1316	16	18-1/2	13-1/2	16	7-7/8	21"	3-1/2"	11
ELUH1511	18	14	15-1/2	11-3/8	6	21"	1-1/2"	7
ELUH2115	23-1/2	18-1/4	21	15-3/4	7-1/2	27"	3-1/2"	14
ELUH211510	23-1/2	18-1/4	21	15-3/4	10	27"	3-1/2"	18
ELUH281610	30-1/2	18-1/2	28	16	10	36"	3-1/2"	23
ELUHAD SERIES								
ELUHAD1116	14	18-1/2	11-1/2	16	*	18"	3-1/2"	11
ELUHAD1212	14-1/2	14-1/2	12	12	*	18"	3-1/2"	11
ELUHAD1316	16	18-1/2	13-1/2	16	*	21"	3-1/2"	11
ELUHAD1316PD	16	18-1/2	13-1/2	16	*	21"	3-1/2"	11
ELUHAD1414	16-1/2	16-1/2	14	14	*	21"	3-1/2"	11
ELUHAD1414PD	16-1/2	16-1/2	14	14	*	21"	3-1/2"	11
ELUHAD1418	16-1/2	20-1/2	14	18	*	21"	3-1/2"	11
ELUHAD1418PD	16-1/2	20-1/2	14	18	*	21"	3-1/2"	11
ELUHAD1616	18-1/2	18-1/2	16	16	*	24"	3-1/2"	11
ELUHAD1916	21-1/2	18-1/2	19	16	*	27"	3-1/2"	17
ELUHAD2115	23-1/2	16-1/2	21	15-3/4	*	27"	3-1/2"	15
ELUHAD2115PD	23-1/2	18-1/4	21	15-3/4	*	27"	3-1/2"	15
ELUHAD2816	30-1/2	18-1/2	28	16	*	36"	3-1/2"	21
ELUHAD2816PD	30-1/2	18-1/2	28	16	*	36"	3-1/2"	21

\* Also available with 5 or 5-1/2 inch bowl depths.

For cutout size, use template furnished with sink.  
See specification sheets for detailed information



## Lustertone® General Use Sinks

- 18 gauge, type 304 nickel bearing stainless steel, self rim design
- 1-3/4" radius coved corners
- Exposed surfaces are hand blended to a lustrous highlighted Lustertone® satin finish.
- Underside of sink is fully undercoated
- Highlighted inside top bowl radius
- Standard six faucet holes furnished
- Recessed bowls and faucet deck
- 3-1/2" drain opening
- **Triple, Double** and **Single** bowl models



LTR46226



LTR5422106

## Lustertone® Triple Bowl Sinks

Model Number	Overall Size (inches)		Bowl Size (inches)			Minimum Cabinet Size	Faucet Holes	Shipping WT. LBS.
	L	W	L	W	D			
LTR4622	46	22	13-1/2	16	7-5/8	51"	3, 4, (6), 8	29
LTR542210	54	22	16	19	10	57"	3, 4, (6), 8	33
LTR632210	63	22	19	16	10	66"	3, 4, (6), 8	47

## Lustertone® Double Bowl Sinks

Model Number	Overall Size (inches)		Each Bowl Size (inches)			Cabinet Size	Minimum Faucet Holes	Shipping WT. LBS.
	L	W	L	W	D			
LR3319	33	19-1/2	14	14	7-5/8	36"	1, 2, MR2, 3, (4) or 5	20
LR3321	33	21-1/4	13-1/2	16	7-7/8	36"	1, 2, MR2, 3, (4) or 5	22
LR3322	33	22	13-1/2	16	8-1/8	36"	1, 2, MR2, 3, (4) or 5	23
LRAD250 **	33	22	16	13-1/2	5-1/2*	36"	1, 2, S2, 3, or (4)	21
LRAD2918	29	18	12	12	5-1/2*	33"	1, 2, MR2, 3, (4) or 5	16
LRAD2922	29	22	11-1/2	16	5-1/2*	33"	1, 2, MR2, 3, (4) or 5	17
LRAD3319	33	19-1/2	14	14	5-1/2*	36"	1, 2, MR2, 3, (4) or 5	20
LRAD3321	33	21-1/4	13-1/2	16	5-1/2*	36"	1, 2, MR2, 3, (4) or 5	23
LRAD3322	33	22	13-1/2	16	5-1/2*	36"	1, 2, MR2, 3, (4) or 5	23
LRAD3722	37	22	16	16	5-1/2*	42"	1, 2, MR2, 3, (4) or 5	24
DLR332210	33	22	13-1/2	16	10-1/8	36"	1, 2, MR2, 3, (4) or 5	25



LR33214



LR3322104

\* Also available with 6 or 6-1/2 inch bowl depths.

\*\* LRAD250 right side bowl measures 14 x 18 x 5-1/2 inches.

LR3321 and LR3322 underside is fully protected by heavy duty Sound Guard® undercoating. Other sinks are fully undercoated.

○ Indicates standard number of faucet holes.

Most general use sinks featured in this catalog are available with our Quick-Clip® Mounting System. See Elkay Residential Catalog for complete description and ordering information.

Cutout size is 5/8" less than overall size with 1-1/2" radius corners, for all drop-in sinks

## Lustertone® Single Bowl Sink Packages

- 18 gauge, type 304 nickel bearing stainless steel, self rim design
- 1-3/4" radius coved corners
- Exposed surfaces are hand blended to a lustrous highlighted satin finish.
- Underside of sink is fully undercoated
- Recessed bowls and faucet deck
- 3-1/2" drain opening
- LRAD models comply with ADA requirements



LR1716C



LR1720C



LR2219C



LR2522C

Model Number	Sink Bowl	Faucet	Drain	Trap	Stops	Supplies
<b>LR1716SC</b>	LR17161	LK500GN04T4	LK18	LK500	(2) 75768C	(2) 75747C
<b>LRAD171655SC</b>	LRAD1716551	LK500GN04T4	LK18	LK500	(2) 75768C	(2) 75747C
<b>LRAD171660SC</b>	LRAD1716601	LK500GN04T4	LK18	LK500	(2) 75768C	(2) 75747C
<b>LRAD171665SC</b>	LRAD1716651	LK500GN04T4	LK18	LK500	(2) 75768C	(2) 75747C
<b>LR1720SC</b>	LR17202	LK406GN04T4	LK18	LK500	(2) 75768C	(2) 75747C
<b>LRAD172055SC</b>	LRAD1720551	LK406GN04T4	LK18	LK500	(2) 75768C	(2) 75747C
<b>LRAD172060SC</b>	LRAD1720601	LK406GN04T4	LK18	LK500	(2) 75768C	(2) 75747C
<b>LRAD172065SC</b>	LRAD1720651	LK406GN04T4	LK18	LK500	(2) 75768C	(2) 75747C
<b>LR2219SC</b>	LR22192	LK406GN04T4	LK18	LK500	(2) 75768C	(2) 75747C
<b>LRAD221955SC</b>	LRAD2219552	LK406GN04T4	LK18	LK500	(2) 75768C	(2) 75747C
<b>LRAD221960SC</b>	LRAD2219601	LK406GN04T4	LK18	LK500	(2) 75768C	(2) 75747C
<b>LRAD221965SC</b>	LRAD2219651	LK406GN04T4	LK18	LK500	(2) 75768C	(2) 75747C
<b>LR2522SC</b>	LR25223	LK810GN04T4	LK18	LK500	(2) 75768C	(2) 75747C
<b>LRAD252255SC</b>	LRAD2522553	LK810GN04T4	LK18	LK500	(2) 75768C	(2) 75747C
<b>LRAD252260SC</b>	LRAD2522603	LK810GN04T4	LK18	LK500	(2) 75768C	(2) 75747C
<b>LRAD252265SC</b>	LRAD2522653	LK810GN04T4	LK18	LK500	(2) 75768C	(2) 75747C
<b>LR1716C</b>	LR17161	LK500GN04T4	LK18	—	—	—
<b>LRAD171655C</b>	LRAD1716551	LK500GN04T4	LK18	—	—	—
<b>LRAD171660C</b>	LRAD1716601	LK500GN04T4	LK18	—	—	—
<b>LRAD171665C</b>	LRAD1716651	LK500GN04T4	LK18	—	—	—
<b>LR1720C</b>	LR17202	LK406GN04T4	LK18	—	—	—
<b>LRAD172055C</b>	LRAD1720552	LK406GN04T4	LK18	—	—	—
<b>LRAD172060C</b>	LRAD1720602	LK406GN04T4	LK18	—	—	—
<b>LRAD172065C</b>	LRAD1720652	LK406GN04T4	LK18	—	—	—
<b>LR2219C</b>	LR22192	LK406GN04T4	LK18	—	—	—
<b>LRAD221955C</b>	LRAD2219552	LK406GN04T4	LK18	—	—	—
<b>LRAD221960C</b>	LRAD2219602	LK406GN04T4	LK18	—	—	—
<b>LRAD221965C</b>	LRAD2219652	LK406GN04T4	LK18	—	—	—
<b>LR2522C</b>	LR22192	LK810GN04T4	LK18	—	—	—
<b>LRAD252255C</b>	LRAD2522552	LK810GN04T4	LK18	—	—	—
<b>LRAD252260C</b>	LRAD2522602	LK810GN04T4	LK18	—	—	—
<b>LRAD252265C</b>	LRAD2522652	LK810GN04T4	LK18	—	—	—

For a complete listing of Elkay sink packages for use in a wide variety of general applications, visit [elkay.com](http://elkay.com)

## Lustertone® Single Bowl Sinks



†



Model Number	Overall Size (inches)		Bowl Size (inches)			Minimum Cabinet Size	Faucet Holes	Shipping WT. LBS.
	L	W	L	W	D			
LR1316	13	16	10	10	7-5/8	18"	1, 2, MR2 or (3)	9
LR1517	15	17-1/2	12	12	7-5/8	18"	1, 2, MR2 or (3)	10
LR1716	17	16	14	10	7-5/8	21"	1, 2, MR2, (3) or OS4	8
LR1720	17	20	14	14	7-5/8	21"	1, 2, MR2, (3) or OS4	12
LR1918	19	18	16	11-1/2	7-5/8	24"	1, 2, MR2, (3) or OS4	13
LR1919	19-1/2	19	16	13-1/2	7-1/2	24"	1, 2, MR2, (3) or OS4	13
LR2219	22	19-1/2	18	14	7-5/8	27"	1, 2, MR2, 3, (4) or 5	13
LR2522	25	22	21	15-3/4	8-1/8	30"	1, 2, MR2, 3, (4) or 5	15
LRAD1316	13	16	10	10	5-1/2*	18"	1, 2, MR2 or (3)	10
LRAD1517	15	17-1/2	12	12	5-1/2*	18"	1, 2, MR2 or (3)	10
LRAD1522	15	22	11-1/2	16	5-1/2*	21"	1, 2, MR2, (3) or OS4	12
LRAD1716	17	16	14	10	5-1/2*	21"	1, 2, MR2, (3) or OS4	8
LRAD1720	17	20	17	20	5-1/2*	21"	1, 2, MR2, (3) or OS4	12
LRAD1722	17	22	13-1/2	16	5-1/2*	21"	1, 2, MR2, (3) or OS4	13
LRAD1918	19	18	16	11-1/2	5-1/2*	24"	1, 2, MR2, (3) or OS4	10
LRAD1919	19-1/2	19	16	13-1/2	5-1/2*	24"	1, 2, MR2, (3) or OS4	11
† LRAD2022	19-1/2	22	16	16	5-1/2*	24"	1, 2, MR2, (3) or OS4	15
LRAD2219	22	19-1/2	18	14	5-1/2*	27"	1, 2, MR2, 3, (4) or 5	13
† LRAD2222	22	22	19	16	5-1/2*	30"	1, 2, MR2, (3) or OS4	14
LRAD2521	25	21-1/4	21	15-3/4	5-1/2*	30"	1, 2, MR2, 3, (4) or 5	15
LRAD2522	25	22	21	15-3/4	5-1/2*	30"	1, 2, MR2, 3, (4) or 5	15
LRAD3122	31	22	28	16	5-1/2*	36"	1, 2, MR2, 3, (4) or 5	19
DLR151710	15	17-1/2	12	12	10	18"	1, 2, MR2 or (3)	12
DLR191910	19-1/2	19	16	13-1/2	10-1/8	24"	1, 2, MR2, (3) or OS4	15
† DLR221910	22	19-1/2	18	14	10-1/8	27"	1, 2, MR2, (3), 4 or 5	14
DLR252210	25	22	21	15-3/4	10-1/8	30"	1, 2, MR2, (3), 4 or 5	19
† DLR252212	25	22	21	15-3/4	12-1/8	30"	1, 2, MR2, (3), 4 or 5	19



LR15173



LRAD19193



DLR2522121

LR1716, LR2522, DLR191910 and DLR252210 underside is fully protected by heavy duty Sound Guard® undercoating. Other sinks are fully undercoated.

\* Also available with 6 or 6-1/2 inch bowl depths.

\*\* Not available with our Quick-Clip mounting system.

○ Indicates standard number of faucet holes.

For a complete listing of Elkay sinks for use in a wide variety of general applications, visit [elkay.com](http://elkay.com).

For cutout size, use template furnished with sink.  
See specification sheets for detailed information

## Lustertone® and Pacemaker® Lavatory Sinks



LLVR1916CS3

- 18 gauge stainless steel (model LLVR1916)
- 20 gauge stainless steel (model PSLVR1916)
- Bowl depth: 6"
- With overflow assembly
- Drain opening: 1-1/2"
- Arranged for standard lavatory type drain fitting



PSLVR1916CS3

Model Number	Overall Size (inches)		Bowl Size (inches)			Minimum Cabinet Size	Faucet Holes	Shipping WT. LBS.
	L	W	L	W	D			
<b>LLVR1310</b>	16	12-1/2	13-5/8	10-1/8	5-3/4	21	-	7
<b>LLVR19</b>	19	19	14	14	7	24	1, 2, ③ or CS3	10
<b>LLVR1916</b>	19-5/8	16-3/4	15-1/2	11-3/8	6	24	1, 2, ③ or CS3	8
<b>PSLVR1916</b>	19	17	15-1/2	11-3/8	6	24	1, 2, 3 or ③ CS3	8
<b>PSLVR1917</b>	19	17	16	11-1/2	6-1/8	24	1, 2, 3 or ③ CS3	9-1/2
<b>RLLVR12</b>	14-3/8	12	12	12	6	18	-	7
<b>RLLVR16</b>	18-3/8	16	16	16	8	24	-	13

○ Indicates standard number of faucet holes.

## Specialty Sinks



CUPR4

- 16 gauge, Type 316 stainless steel
- Self-rim design with crimped edges
- Drain is 1-1/2" IPS x 2-1/4" long Type 316 stainless steel
- Available in 3 sizes:
  - CUPR 4 (4" bowl, 6-3/8" overall, 3 lbs.)
  - CUPR 5 (5" bowl, 7-3/8" overall, 3 lbs.)
  - CUPR 6 (6-1/2" bowl, 8-7/8" overall, 4 lbs.)

Model Number	Overall Size (inches)		Bowl Size (inches)			Minimum Cabinet Size	Faucet Holes	Shipping WT. LBS.
	L	W	L	W	D			
<b>CUPR4</b>	6-3/8 Dia.		4	4	4	-	-	3
<b>CUPR5</b>	7-3/8 Dia.		5	5	4	-	-	3
<b>CUPR6</b>	8-7/8 Dia.		6-1/2	6-1/2	5	-	-	4

For a complete listing of Elkay sinks for use in a wide variety of general applications, visit [elkay.com](http://elkay.com).

For cutout size, use template furnished with sink.  
See specification sheets for detailed information



## With Elkay, Anything is Possible

As demonstrated in the pages of this catalog, Elkay offers an extensive line of stainless steel sinks for just about every commercial application. However, sometimes a sink's function and size is far from standard, and a **custom** product is required. With an exacting attention to detail and our superior hand fabrication capabilities, our custom department is able to create almost anything. And as the world's leading stainless steel sink source, we have what it takes to see your one-of-a-kind design through to perfection.





## COUNTERTOPS

Elkay custom counter-tops and custom sink tops are fabricated to your exact specifications from the finest stainless steel. Built to provide the most seamless appearance possible, Elkay Custom Countertops feature one-piece construction, which is welded, ground and polished smooth in place with intersections of 1/4" radius. And our custom countertops and custom sink tops are available with a satin lustrous hand polished or matte finish, each providing a stunning look that stands the test of time.



## SCULLERY

The Elkay scullery sinks in the Foodservice and Service and Utility sections of this catalog can handle most commercial kitchen requirements; but if you need one that is wider or narrower, deeper or shallower, or with a different size drainboard or backsplash, we will make it just for you! **For detailed information on our custom scullery sink capabilities, please contact your Elkay sales representative.** Note: Non-standard hole configurations for our Sturdibilt and Weldbilt models can be seen on page 51.



## MODIFIED STANDARD INSTITUTIONAL

Our custom sink capabilities go beyond countertops and scullery sinks. In fact, it extends throughout our entire commercial line. So if you have a unique application in the lavatory, or need a one-of-a-kind sink for your service area, give us a call. We have the ability to hand fabricate a bowl to the exact size, shape and depth that you require.



## YOU IMAGINE IT. WE BUILD IT.

Elkay offers a revolutionary capability that allows you to design stainless steel, one-of-a-kind creations. Our new Elkay Technology Center sets you free to design plumbing fixtures that turn what your customers envision into reality.



Sacristy Sink

## SPECIALTY SINKS

In addition to our custom sink production abilities, Elkay offers an array of products for special applications including sacristy sinks, cup sinks and **stainless steel cabinet sink tops and lavatory tops** for cabinet, wall mounting or leg support installations.

**Sacristy Sinks** are 18 gauge, Type 304 stainless steel. The cover has a piano type hinge, cross, cylinder lock and keys. Many of our general use models can be modified for use as a sacristy sink.

So if your sink applications stray a bit from the norm, don't worry ... with Elkay, anything is possible. Our custom team will help find the simplest, most cost-effective solutions and provide assistance throughout the process of your order. To learn more **contact your Elkay sales representative**, visit [elkayusa.com](http://elkayusa.com) or call our Custom Department at 630.574.8570.

## Elkay® Custom Solutions General Use Sinks

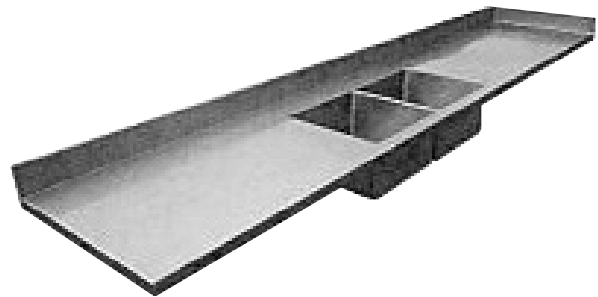
Build on your imagination. Elkay® custom sinks are fabricated to your specifications, from 14, 16 or 18 gauge, Type 304 or 316 stainless steel for durability.

Built to provide the most seamless appearance possible, all feature seamless one-piece construction, welded, ground, and polished by hand to a satin finish for a stunning look that stands the test of time.

### Available Categories

#### Sink tops / Countertops

- Straight
- L-Shaped
- U-Shaped



#### Hand Fabricated Bowls

- Drop-In
- Undermount



#### Custom Commercial Designs (Legs or wall mounted)

- Scullery
- Scrub Sinks
- Floor Mop Sinks



**For a quick quote contact:**

630-574-8570

CIS@elkay.com



LK800GN05T4

## FAUCETS

### LK800GN05T4

Chrome plated deck mount sink faucet with 4" wristblade handles, 5" gooseneck spout and 2.2 GPM vandal resistant aerator standard with .5 GPM insert included. Solid brass construction. Adjustable mounting up to 8" spread. Quarter turn ceramic disc cartridge. Includes spout swing restriction pin. **ADA Compliant.** Ship Wt. 6.5 lbs.  
**Available with 6" wristblade handles (LK800GN05T6)**



LK940GN04L2H

### LK940GN04L2H

Chrome plated 8" centerset wall mount sink faucet with 2" lever handles, 4" gooseneck spout and 2.2 GPM vandal resistant aerator standard with .5 GPM insert included. Solid brass construction. Quarter turn ceramic disc cartridge. Includes spout swing restriction pin. **ADA Compliant.** Ship Wt. 6.25 lbs.



LK940GN08T4H

### LK940GN08T4H

Chrome plated 8" centerset wall mount sink faucet with 4" wristblade handles, 8" gooseneck spout and 2.2 GPM vandal resistant aerator standard with .5 GPM insert included. Solid brass construction. Quarter turn ceramic disc cartridge. Includes spout swing restriction pin. **ADA Compliant.** Ship Wt. 6 lbs.  
**Available with 6" wristblade handles (LK940GN08T6H)**



LK940BR03L2H

### LK940BR03L2H

Rough chrome finish 8" centerset wall mount service sink faucet with 2" lever handles, and threaded hose spout with bucket hook. Solid brass construction. Quarter turn ceramic disc cartridge. 1/2" NPT female inlet. **ADA Compliant.** Ship Wt. 7.5 lbs.



LKB940C

### LK940BR07L2H

Rough chrome finish 8" centerset wall mount service sink faucet with 2" lever handles, threaded hose spout with bucket hook and wall support arm. Solid brass construction. Quarter turn ceramic disc cartridge. 1/2" NPT female inlet. **ADA Compliant.** Ship Wt. 8.75 lbs.



LK69CP

### LK69CP

Chrome plated brass service sink faucet with cross arm handle, 1/2" IPS female flanged inlet, plain outlet. Ship Wt. 1 lb.



LK69CH

### LK69CH

Chrome plated brass service sink faucet with cross arm handle, 1/2" IPS female flanged inlet, 3/4" hose thread outlet. Ship Wt. 1 lb.

### LK69C

(Pair) Includes (1) hose threaded outlet and (1) plain outlet. Chrome plated brass, 1/2" IPS female flange inlets. Ship Wt. 2 lbs.



LKD232SBH5C

### LKD232SBH5C

Chrome plated 8" centerset concealed deck mounted faucet with 5" brass blade handles, 5-5/8" gooseneck spout, 2.2 GPM aerator, removable cartridges, and water saving flow restrictor. **ADA Compliant.** Ship Wt. 7 lbs.

## ELECTRONIC DECK MOUNT

- Dual power AC and battery
- Adjustable sensor range
- Gooseneck spout
- 2.0 gpm laminar flow aerator
- Chrome plated finish
- Solid brass construction
- Vandal-resistant and water-resistant sensor control module
- Adjustable shut-off delay
- Adjustable time-out feature



Model Number	Spout Reach	Power	Shipping WT. LBS
<b>LKB721C</b>	5-3/8"	AC/Battery	7



LKB721C

## ELECTRONIC WALL MOUNT

- Dual power AC and battery
- Adjustable sensor range
- Gooseneck spout
- 2.0 gpm laminar flow aerator
- Chrome plated finish
- Solid brass construction
- Vandal-resistant and water-resistant sensor control module
- Adjustable shut-off delay
- Adjustable time-out feature



Model Number	Spout Reach	Power	Shipping WT. LBS
<b>LKB722C</b>	5-3/8"	AC/Battery	8



LKB722C



LKMK462

## BACKSPLASH MOUNTING KIT

### LKMK462

For installation of wall-mount faucets onto stainless steel backsplash. Includes 2 ea. of 1/2" nipples, 1/2" NPT by 1/2" sweat elbows, washers and lock nuts. 1 lb.

## SENSOR OPERATED FAUCET ACCESSORIES

### Mixing Valves

#### LK723

Anti-scald thermostatic mixing valve with nickel plated brass body, 1/2" SWT inlets and outlet connections, check valves on inlets and mixed temperature range of 80°-120°F. Certified under ASSE 1016. Ship Wt. 2 lbs.



LK723



LK724

#### LK724

Mechanical mixing valve with C.P. brass body, 1/2" inlets and outlet connections, and check valves on inlets. Ship Wt. 1 lb.

## VALVES AND SPOUTS

### Knee Action and Foot Pedal Valves

#### LK397C

Chrome plated wall hung **knee operated valve**, 1/2" I.P.S. inlets and 3/8" IPS outlet, with enameled iron wall bracket and mounting package. Mounting package includes (2) stops, (2) valves and (2) wall flanges, tapped for 1/2" IPS inlets and outlets Ship Wt. 14 lbs.



LK397C

LK398C

#### LK398C

Chrome plated wall hung **double foot pedal valve** (14" from wall to tip of pedals), 1/2" IPS inlets and 3/8" IPS outlet, and mounting package. Mounting package includes (2) angle stops and wall flanges. Ship Wt. 9 lbs.



LK399A

#### LK399A

Rough chrome plated **floor mount double foot pedal valve**, tapped 1/2" IPS inlets and 1/2" IPS outlet. Pedals are CP and color indexed. Ship Wt. 3 lbs.

### Spouts for use with Knee Action and Foot Pedal Valves

#### LK395A

Chrome plated **back mount** swing 8-1/4" high gooseneck spout with vandal-resistant anti-hose aerator (4-7/8" from wall to outlet), and 1/2" IPS female flanged inlet. Furnished with 1/2" male thread by 1/2" SWT copper brass elbow, 1/2" nipple, washer, and locknut. Ship Wt. 3 lbs.



LK395A



LK396A

#### LK396A

Chrome plated **deck mount** rigid 10-3/4" high gooseneck spout with vandal-resistant anti-hose aerator (6-1/4" from base to spout outlet) and 1/2" ID coupling nut. Ship Wt. 3 lbs.



## 3-1/2" DRAIN FITTINGS

- LK2** Chrome plated brass with rubber stopper and 1-1/2" O.D. 4" chrome plated brass tailpiece. Ship Wt. 1 lb.
- LK18** Chrome plated with 3" perforated grid strainer and 1-1/2" O.D. 4" chrome plated brass tailpiece. Ship Wt. 1 lb.
- LK18B** Same as LK18, except with Type 304 stainless steel body, strainer and tailpiece. Ship Wt. 1 lb.
- LKAD18** Same as LK18, except with chrome plated brass offset 1-1/2" O.D. 4" tailpiece. ADAE Compliant. Ship Wt. 2 lbs.
- LKVR18** Same as LK18, except with 3" vandal-resistant perforated grid strainer. Ship Wt. 1 lb.
- LKVR18B** Same as LK18B, except with 3" vandal-resistant perforated grid strainer. Ship Wt. 1 lb.
- LK35** Strainer for **3-1/2" opening**, 4-1/2" top diameter. Stainless steel body, conical stainless steel basket strainer with flex stem and rubber stopper. Chrome plated brass 1-1/2" O.D. 4" tailpiece. Ship Wt. .5 lb.
- LK35B** All stainless steel duo strainer for **3-1/2" opening**, 4-1/2" top diameter. Stainless body, conical stainless steel basket strainer with flex stem and rubber stopper. Brass coupling nut and 1-1/2" O.D. 4" stainless steel tailpiece. Ship Wt. 1 lb.
- LKAD35** Similar to LK35, except comes with chrome plated brass offset drain, 1-1/2" O.D. 4" tailpiece. **ADA Compliant**. Ship Wt. 2.75 lbs.
- LK173** **Adjustable "P" trap** standard for **3-1/2" opening**, cast iron enameled inside, 3" iron pipe outlet with bronze cleanout plug and floor support flange with adjustable nipple. Chrome plated metal perforated grid strainer. Ship Wt. 20 lbs.
- LK335** Same as LK35B, except Type 316 stainless steel.
- LK372** Same as LK18B, except Type 316 stainless steel.



LK2



LK18



LKAD18



LK35



LKAD35



LK173



LK335



LK372



LK8



LK177



LK337

## 2" - 2-3/8" DRAIN FITTINGS

### LK8

Chrome plated stamped brass drain outlet fitting for **2" opening**, 3" top diameter with 2" perforated grid strainer and 1-1/2" O.D. 4" tailpiece. Ship Wt. .75 lb.

### LK9

Same as LK8, except with 1-1/4" O.D. tailpiece. Ship Wt. .75 lb.

### LK177

Chrome plated brass beehive strainer for **2" opening** with 1-1/2" O.D. 4" brass tailpiece. Ship Wt. 1.5 lbs.

### LK337

Same as LK8, except Type 316 stainless steel. Ship Wt. .75 lb.



LKAD174



LK174



LK174-CU

## 1-1/2" - 1-5/8" DRAIN FITTINGS

### LKAD174

Chrome plated brass lavatory drain outlet fitting with perforated grid. Arranged for overflow. **1-1/2" opening** and 1-1/4" overall diameter. Comes with chrome plated cast brass elbow and 1-1/4" O.D. chrome plated brass offset tailpiece. **ADA-Compliant.** Ship Wt. 1.25 lbs.

### LKAD174LO

Same as LKAD174 except not arranged for overflow. Ship Wt. 1 lb.

### LK174

Chrome plated brass lavatory drain outlet fitting, arranged for overflow, **1-1/2" opening** with perforated grid and 1-1/4" O.D. 6" tailpiece. Ship Wt. 1 lb.

### LK174LO

Same as LK174 except not arranged for overflow. Ship Wt. 1 lb.

### LK174-CU

CuVerro® antimicrobial copper lavatory drain outlet fitting, arranged for overflow, **1-1/2" opening** with perforated grid and 1-1/4" O.D. 6" tailpiece. Ship Wt. 1 lb.

### LK174LO-CU

Same as LK174LO except made with CuVerro®, antimicrobial copper. Not arranged for overflow. Ship Wt. 1 lb.

### LK175

Chrome plated brass drain outlet fitting, arranged for overflow, **1-1/2" opening** with rubber stopper, ring, chain and 1-1/4" O.D. 5" tailpiece. Ship Wt. 1 lb.



LK175



LK99

## 3-1/2" DRAIN FITTING

### LK99

Drain outlet fitting, removable conical basket for **3-1/2" opening**, 4-1/8" O.D. top stainless steel flange

## 3-1/2" DRAIN FITTINGS with LEVER HANDLE

### LK24RT

Rotary lever operated drain outlet fitting for **3-1/2" opening**, 4-1/8" O.D. top stainless steel flange with brass body, stainless steel perforated grid, chrome plated brass 1-1/2" O.D. 4" tailpiece and stainless steel lever arm. Ship Wt. 4 lbs.

### LK25RT

Same as LK24RT, except with chrome plated brass 2" O.D. 4" tailpiece. Ship Wt. 4 lbs.

### LK27

Lever operated drain outlet fitting for **3-1/2" opening**, 4-1/2" O.D. top stainless steel flange with brass body, conical stainless steel basket strainer with flex stem and rubber stopper, and chrome plated brass, 1-1/2" O.D. 4" tailpiece. Ship Wt. 3 lbs.



LK27



LK24RT



LK86RT

## 3-1/2" DRAIN FITTINGS with LEVER HANDLE and OVERFLOW

### LK86RT

Same as LK24RT, except with 1-1/4" O.D. chrome plated brass connected overflow with stainless steel overflow faceplate. Ship Wt. 6 lbs.

### LK87RT

Same as LK86RT, except with chrome plated brass 2" O.D. 4" tailpiece. Ship Wt. 6 lbs.

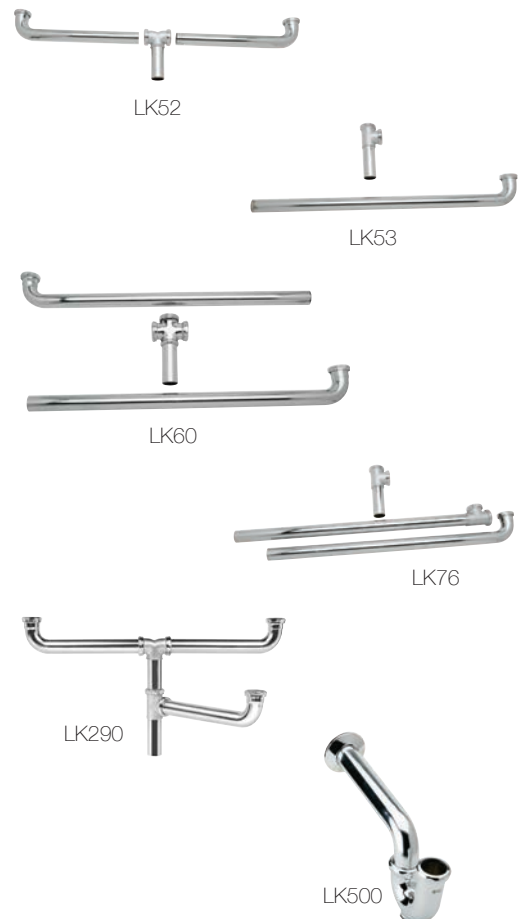
## DRAIN FITTINGS with STANDPIPE OVERFLOW

- LK20** Chrome plated brass drain fitting for **3-1/2" opening**, 4-1/2" O.D. top diameter with 1-1/2" O.D. 11" high standpipe, rubber stopper, and 1-1/2" O.D. 4" tailpiece. Ship Wt. 2 lbs.
- LK273** Stainless steel drain fitting for **2" opening**, 2-13/16" O.D. top diameter with 1-1/2" O.D. 13-1/8" high stainless steel standpipe, rubber stopper and 1-1/2" O.D. chrome plated brass 4" tailpiece. Ship Wt. 2 lbs.
- LK373** Type 304 stainless steel drain outlet fitting with rubber stopper for **3-1/2" opening** with overall flange size of 4-1/2", 1-1/2" O.D. tailpiece and 5-1/4" removable stand pipe with "O" ring. Ship Wt. 2 lbs.



## CONTINUOUS WASTE DRAIN CONNECTIONS

- LK52** Chrome plated brass 1-1/2" O.D. continuous waste for two compartment sinks (30" center to center sink outlets) with center outlet, brass coupling nuts and 1-1/2" O.D. 4" tailpiece. Ship Wt. 2.75 lbs.
- LK53** Same as LK52, except end outlet. Ship Wt. 2.5 lbs.
- LK60** Chrome plated brass 1-1/2" O.D. continuous waste for three compartment sinks (30" center to center to center sink outlets) with center outlet, brass coupling nuts and 1-1/2" O.D. 4" tailpiece. Ship Wt. 5 lbs.
- LK76** Same as LK60, except with end outlet. Ship Wt. 4.5 lbs.
- LK290** Chrome plated brass tubing and tailpiece. Center outlet. For triple bowl sinks with offset center drain. 1-1/2" O.D. Ship Wt. 5 lbs.
- LK500** Chrome plated cast brass 1-1/2" O.D. "P" trap with cleanout plug, 1-1/2" O.D. tubing waste arm to wall and wall flange. Ship Wt. 1.5 lbs.





LK34



LK43



LK80



LK350



LK363



LK364



LK402



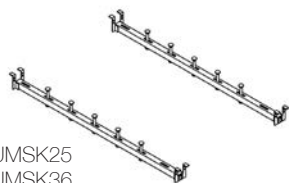
LK403



LK404



LKUCLIP8


LKUMSK25  
LKUMSK36

## ACCESSORIES

### LK34

Sink restoration kit. Assorted abrasives to assist in blending scratches into the finish. Ship Wt. ??? lbs.

### LK43

5-1/2" stainless steel dome/flat grid strainer for **EFS Floor Service Sink**. Ship Wt. 2 lbs.

### LK80

Stainless Steel Soap Dish for back/wall mounting, 3-1/2" x 6". Ship Wt. 1 lb.

### LK350

Screwdriver with special head design and extra long shank to fit installation screws. Ship Wt. 1/2 lb.

### LK363

Set of 14 extra long screws and clips for top mount installation of U-channel models. For countertops up to 1-1/2" thick. Ship Wt. 1/2 lb.

### LK364

Set of 14 extra long screws for top mount installation of U-channel models. For countertops up to 1-1/2" thick. Ship Wt. 1/2 lb.

### LK402

Black Heavy Duty Rubber Hose, 36" length for **EFS Floor Service Sink**. Standard female hose connection on one end. Ship Wt. 1 lb.

### LK403

Wall mount, 3 station, Stainless Steel Mop Holder for **EFS Floor Service Sink**. Ship Wt. 2 lbs.

### LK404

Hose Hanger, stainless steel for **EFS Floor Service Sink**. Ship Wt. 1 lb.

### LKUCLIP8

Set of 8 undermount clips designed to attach undermount sinks to a solid surface countertop. Ship Wt. 1 lb.

### LKUMSK25

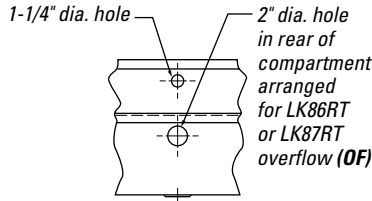
Undermount support kit can be cut to the desired length as required. Designed to support sinks from the cabinet walls. 25" long. Ship Wt. 2 lbs.

### LKUMSK36

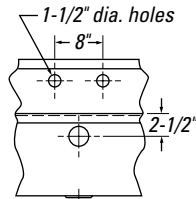
Undermount support kit can be cut to the desired length as required. Designed to support sinks from the cabinet walls. 36" long. Ship Wt. 3 lbs.

# Sturdibilt® and Weldbilt® Scullery Sinks with Non-Standard Hole Configurations

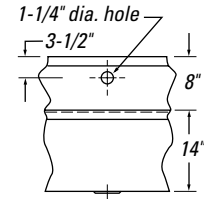
## Single Compartment Scullery Hole Chart



1-hole over compartment and 1 overflow hole (OF)  
(MODEL NUMBER)OF 1



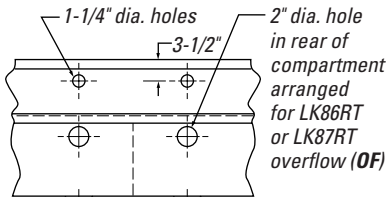
2-holes over compartment and 1 overflow hole (OF)  
(MODEL NUMBER)OF 2



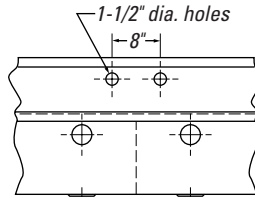
1-hole over compartment (MODEL NUMBER)1

Examples: SS 8124OF 2 and WNSF 8124OF 2

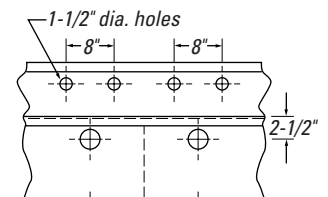
## Double Compartment Scullery Hole Chart



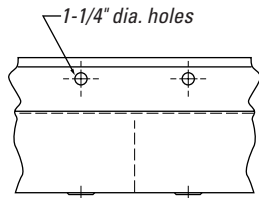
1-hole over each compartment and 2 overflow holes (OF)  
(MODEL NUMBER)OF \_



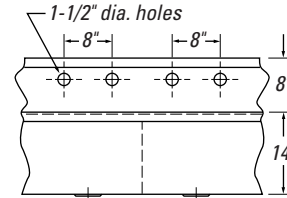
2-holes over partition and 2 overflow holes (OF)  
(MODEL NUMBER)OF 2



2-holes over each compartment and 2 overflow holes (OF)  
(MODEL NUMBER)OF 4



1-hole over each compartment  
(MODEL NUMBER)\_

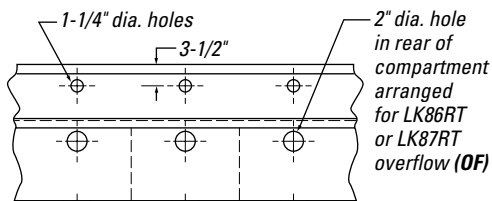


2-holes over each compartment  
(MODEL NUMBER)4

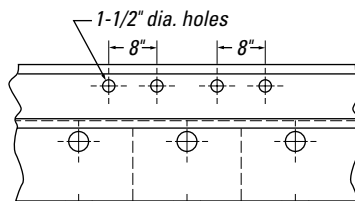
Examples: SS 8230OF\_ and WNSF 8230OF\_



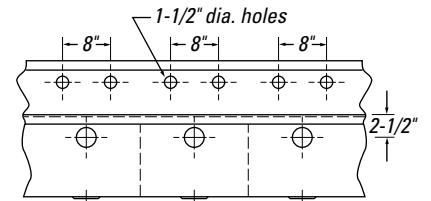
## Triple Compartment Scullery Hole Chart



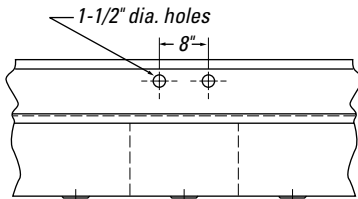
1-hole over each compartment and 3 overflow holes (OF)  
(MODEL NUMBER)OF 3



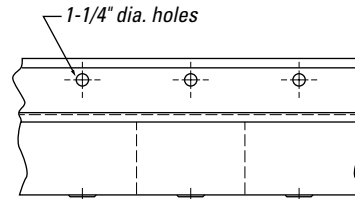
2-holes over partitions and 3 overflow holes (OF)  
(MODEL NUMBER)OF 4



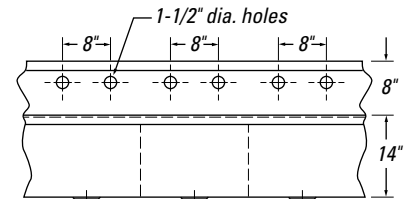
2-holes over each compartment and 3 overflow holes (OF)  
(MODEL NUMBER)OF 6



2-holes over center compartment  
(MODEL NUMBER)2



1-hole over each compartment  
(MODEL NUMBER)3



2-holes over each compartment  
(MODEL NUMBER)6

Examples: SS 8372 LOF 3 and WNSF 8372 ROF 3

## Elkay Values

- We are in business forever
- Our strength is in our people
- We value quality in all we do
- Knowledge empowers
- Making a profit is an honorable endeavor
- Our word is our bond

## American Pride. A Lifetime Tradition.

Like your family, the Elkay family has values and traditions that endure. For almost a century, Elkay has been an American-owned and operated company, providing thousands of jobs that support our families and communities. We are proud to say ELKAY USA.



# ELKAY®

## Coast-To-Coast Elkay Sales Network

Our national sales presence and extensive distributor base provide excellent service and convenience. For the name of your nearest Elkay sales rep or wholesaler:

- Visit the "Where to Buy" area on [elkay.com](http://elkay.com)
- Call our customer service department at 630.572.3192

## Elkay Technical Support

- Help is always just "One Call" away
- Trained factory technicians available during business hours, 5 days a week
- 98% of technical service inquiries handled on the first call

## Visit [elkay.com](http://elkay.com)

- Up-to-date product specification sheets
- Current catalog and pricing
- Local sales rep locator
- Warranty information
- Where to buy our products
- Service information
- How to contact Elkay

Throughout the birth and growth of the Elkay plumbing products group, the leadership and vision of Elkay's founders has always been maintained: provide better customer service, higher quality and more innovation than our competitors. Our sinks are no exception. We invite you to learn more about our products and services.

## Contact Information

Website: [elkay.com](http://elkay.com)

Corporate Headquarters:

630.574.8484

Customer Service: 630.572.3192

Fax: 630.574.5012

2222 Camden Court

Oak Brook, Illinois 60523