

**NOVAGUARD™ BENCH - VERTICAL SASH**

Designed to deliver competitive containment performance and energy efficiency. The NovaGuard™ operates with exhaust volumes significantly lower than conventional hoods. Providing the operator with a secure and reliable operation environment while providing considerable capital and operating cost savings. Suitable for Constant Air Volume (CAV) and Variable Air Volume (VAV) requirements. The NovaGuard™ bench mounted fume hood is supplied with the following standard features:



**Face Velocities** - Tested to both standard and modified ASHRAE procedures at face velocities as low as 50 fpm fully open.

**Baffle Design** - Downflow rear baffle is biased to the bottom, drawing fumes downward away from the user and counteracts the normal upward flow of vapors and prevents contaminated air build up behind the closed sash.

**Exhaust System** - Suitable for use in either Variable Volume or Constant Volume applications.

**Chain Drive Sash** - Chain and sprocket mechanism that delivers the easiest and most reliable sash operation available with an exceptionally long life span.

**Full Viewing Area** - Provides a clear and unobstructed side to side view of fume hood interior, with a 44-1/2" high viewing area. Rear mounted fixed tinted visor included.

**Self-Lowering Sash System** - Sash latch temporarily secures the sash in the full open position for setup and tear down operations. When the lock is freed, the sash automatically returns to the 18" open operational position which offers extra protection to the operator and helps reduce energy consumption. Below 18" the sash is equally balanced.

**Flush Sill Airfoil** - Low-profile hinged Type 316 powder coated stainless steel airfoil is flush with work surface to provide ergonomic and unobstructed access to the interior. Power cords can be run through the sill to the electrical outlets on the hood posts.

**Spill Trough** - Designed to provide secondary containment in the event a spill escapes the primary containment work top.

**Electrical and Plumbing** - Two UL/CSA approved duplex receptacles provided for 120 volt service. Built-in LED lighting and a corner post mounted UL/CSA approved switch provided. Fixture holes are not pre-punched and punched only as ordered (front post can accept five fixtures per side). Factory pre-plumbing is an available option as well as plumbing fixtures from a variety of manufacturers to meet most plumbing needs.

**Removable Panels** - Side panels are easily removed to access interior electrical or plumbing fixtures.

**Stainless Steel Exhaust Collar** - Wide rectangular exhaust duct connection improves airflow distribution across hood width.

**Agency Approvals** - UL 1805 Classified, CSA certified to UL 61010 and tested in accordance with ASHRAE 110-2016. Test results available upon request.

Vertical Raising Sash (Chain & Sprocket Sash System)					
Width	FRP	PVC	Epoxy	316 S/S Sq. Cor	316 S/S Rad. Cor
48"	72A1040	72A3040	72A6040	72A4040	72A5040
60"	73A1040	73A3040	73A6040	73A4040	73A5040
72"	74A1040	74A3040	74A6040	74A4040	74A5040
96"	75A1040	75A3040	75A6040	75A4040	74A5040

Exhaust Transition		
Width	Item Number	Duct Dia.
48"	EXT0036	10"
60"	EXT0036	10"
72"	EXT0036	10"
96"	EXT2336	12"

**Exhaust Transition**

- Fits over exhaust collar on NovaGuard™ hoods.
- Exhaust transitions (rectangular duct to round duct) are available in 18 gauge, type 316 stainless steel or powder coated galvanized steel and fits over vent collar.
- Base size 3" x 36".

**NOVAGUARD™ BENCH - VERTICAL SASH**

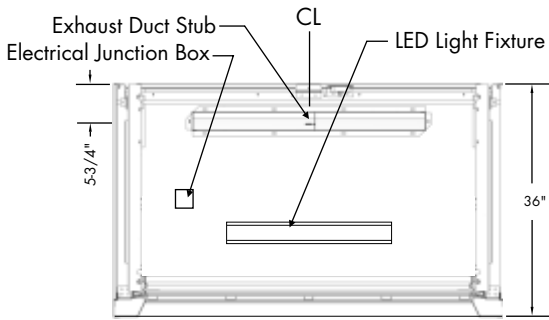
**Exhaust Parameters**

Hood Size	Duct Size	80 FPM 18" Max Sash Opening		80 FPM 28-1/2" Max*		60 FPM 18" Max Sash Opening		60 FPM 28-1/2" Max*		50 FPM 18" Max Sash Opening		50 FPM 28-1/2" Max*	
		CFM	SP**	CFM	SP**	CFM	SP**	CFM	SP**	CFM	SP**	CFM	SP**
48"	3" x 36"	385	0.05	610	0.07	289	0.04	457	0.06	241	0.03	381	0.05
60"	3" x 36"	505	0.05	800	0.11	379	0.04	600	0.06	316	0.03	500	0.05
72"	3" x 36"	625	0.07	990	0.17	469	0.04	742	0.10	391	0.03	618	0.07
96"	3" x 36"	865	0.13	1370	0.33	649	0.07	1027	0.19	541	0.05	856	0.13

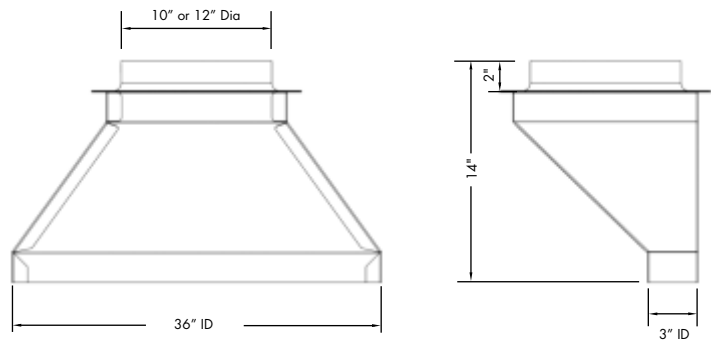
\*28-1/2" max sash opening is recommended for set-up and tear down only.

\*\* Does not include transition.

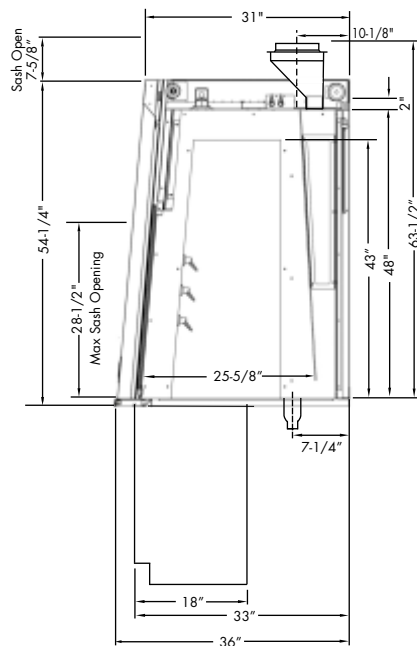
**Typical Roof Details**



**Optional Exhaust Transition Details**



**Side Section Details**



**Side Window Option**



WL - Glass end panels on left side - replaces solid end panel on left

WR - Glass end panel on right side - replaces solid end panel on right

WB - Glass end panels on both sides - replaces both solid end panels

**Alcove Shelving Option**



Alcove Shelving: Type 316, powder coated, perforated stainless steel

ASL - Alcove shelf on left side  
ASR - Alcove shelf on right side  
ASB - Alcove shelf on both sides

Note: Depending on shelf position, available plumbing service locations will be reduced. Contact Mott for details.