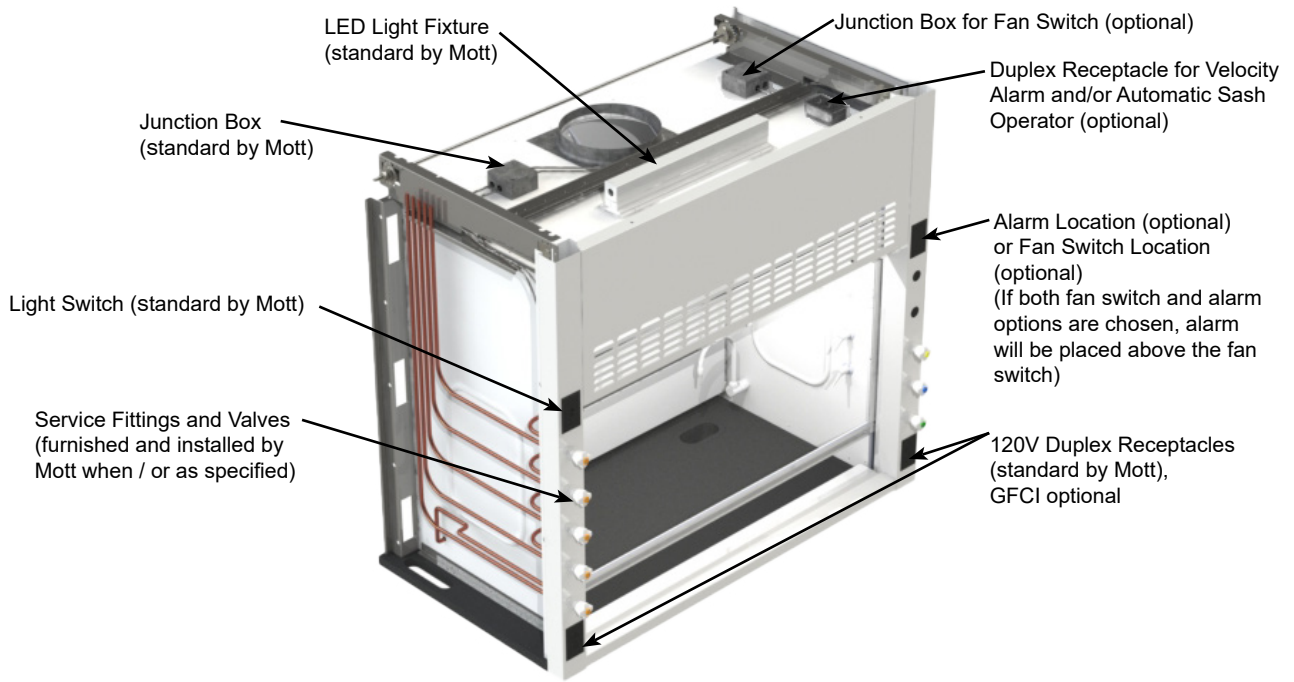


FUME HOOD ELECTRICAL DETAILS

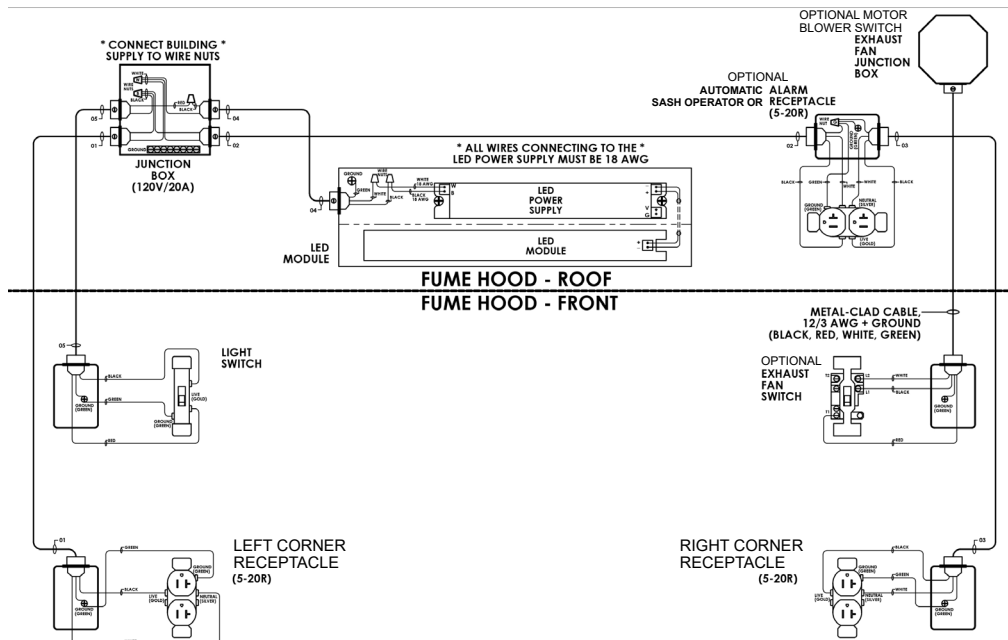
A full line of fume hood electrical fixtures are available to complete the installation of your new fume hood. Please refer to specific fume hoods to identify which fixtures are right for your hood. Fume hoods can be configured with additional options such as electrically classified lights, polarized and GFCI duplexes, switches and receptacles with various voltage requirements, variable transformers, kill switches and more. For area classifications, anti-arcing devices are available. Specify NEMA code when ordering. For more information please contact Mott Manufacturing.

Typical Fume Hood Electrical Details

This information applies to all fume hoods unless otherwise noted on the specific fume hood page



Typical fume hood wiring diagram showing optional fan switch and velocity alarm duplex.



Note: Fume hoods with standard electrical are generally powered from a single 120V/20A circuit breaker. Fume hoods do not include exhaust fans.

FUME HOOD SERVICE FIXTURES

A full line of fume hood fixtures are available from most manufacturers to complete the installation of your new fume hood. Service fixtures can be pre-plumbed at the factory, they can also be ordered loose to be implemented in existing hoods.

Front loaded and rod driven remote control valves with various outlet fittings are available with accessibility and safety features. Common services are: air, vacuum, nitrogen, argon, CO², oxygen, and natural gas with many others available. Natural gas is not available in all hoods and in all jurisdictions depending on code requirements. Contact Mott for more information.

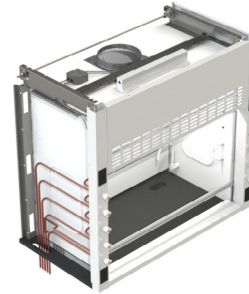
Typical Piping Supply Lines

.375" OD copper tubing for all services.
.375" schedule 40 black pipe for natural gas in USA only.
Note: .375" OD copper tube for Gas in Canada.

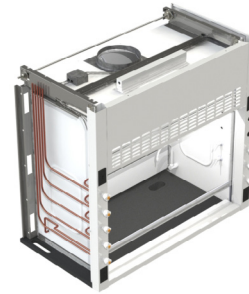
Service Fitting Colors & Index Symbols

Service	Index Color	Index Symbol
Air	Orange	AIR
Carbon Dioxide	Pink	CO2
Cold Water	Green	CW
Deionized Water	White	DW
Distilled Water	White	DI
Gas	Blue	GAS
Hot Water	Red	HW
Nitrogen	Brown	NIT
Oxygen	Lt. Green	OXY
Steam	Black	STM
Vacuum	Yellow	VAC

Typical Fume Hood Plumbing Details



Plumbing pre-piped down to bottom, routed to the rear of the fume hood.

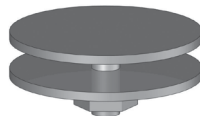


Plumbing pre-piped up to top, routed to the rear of the fume hood.

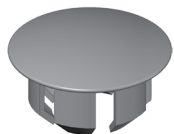
Fume Hood Fixture Hole Covers



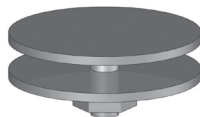
Front Load & Rod Type Exterior Plug Available In: Black or White



Front Load & Rod Type Exterior Plug Available In: Stainless Steel or Painted Stainless Steel



Interior Plug Available In: White



Interior Plug Available In: Stainless Steel or Painted Stainless Steel

Part Number	Hole Size / Diameter	Front Load Exterior Application
HCBFE00	1-1/4"	Black Plug for Plumbing Holes
HCWFE00	1-1/4"	White Plug for Plumbing Holes
HCSFE00	1-1/4"	Stainless Plug for Plumbing Holes
HCPFE00	1-1/4"	Painted Stainless Plug for Plumbing Holes

- These plugs are used to cover exterior fixture plumbing holes in various materials on a fume hood plumbed with front load fixtures

Part Number	Hole Size / Diameter	Rod Type Exterior Application
HCBRE00	11/16"	Black Plug for Plumbing Holes
HCWRE00	11/16"	White Plug for Plumbing Holes
HCSRE00	11/16"	Stainless Plug for Plumbing Holes
HCPRE00	11/16"	Painted Stainless Plug for Plumbing Holes

- These plugs are used to cover exterior fixture plumbing holes in various materials on a fume hood plumbed with rod type fixtures

Part Number	Hole Size / Diameter	Interior Application
HCWN100	3/4"	White Plug for Plumbing Holes
HCWA100	1"	White Plug for Alarm Holes
HCSN100	3/4" - 1"	Stainless Plug for Plumbing or Alarm Holes
HCPN100	3/4" - 1"	Painted Stainless Plug for Plumbing or Alarm Holes

- These plugs are used to cover interior fixture plumbing and alarm holes in various materials on any fume hood