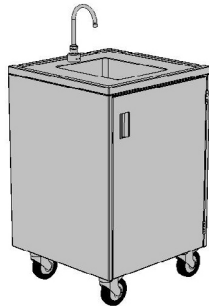


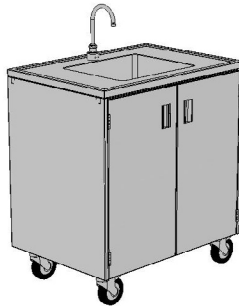
MOBILE SINK CABINETS

MOBILE SINK CABINET

Mobile Sink Cabinets

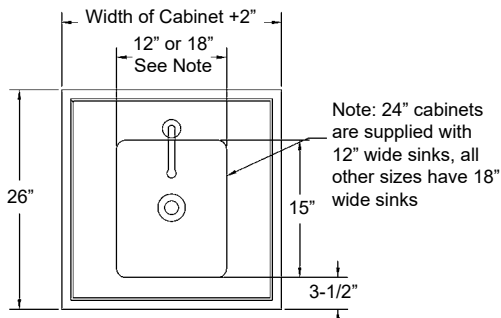


24" wide

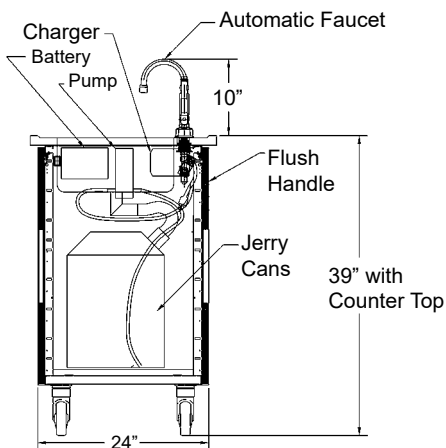


30" and wider

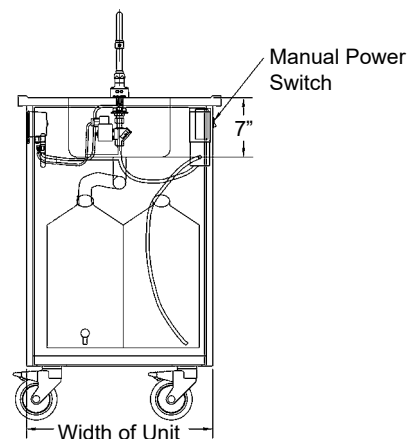
Top View of Work Top



Side View



Front View



Width	Right Hinged	Left Hinged	# of Doors
24"	MS24011	MS24111	1
30"	MS30011	-	2
36"	MS36011	-	2
42"	MS42011	-	2
48"	MS48011	-	2

This cabinet provides a flexible supply of water in any research, school or care facility and can be used all through the facility when access to water is not available.

- Available in either type 304 stainless steel or powder coated steel with protective Sigma Barrier™ coating.
- Durable stainless steel work top with raised perimeter marine edge with integrally welded sink allows for easy cleaning.
- Work top provides a 1" overhang on all four sides.
- Automatic faucet with infrared sensor provides hands-free operation.
- Plate mounted, non-marking 5" total lock swivel castors with santoprene rubber wheels allows the user to quickly and easily move to another work station, as tasks change.
- 5 US gallon fresh water container, 5 US gallon waste water container with drain spigot for easy release of waste water into the floor drain.
- Automatic pump provides up to 1.1 US gallons per minute with maximum current draw of 1.9 amperes at 12 volt.
- Onboard sealed 12volt battery and 1.5 amp automatic charger including 6' cord and plug. Manual power switch on cabinet side.
- Doors on front and back of cabinet provides convenient access for servicing.
- Shipped assembled and skidded.
- Use option code WS for supply hose to hook up with facility water supply, if fresh water tank and pump is not required.