

GLASSGUARD™ VENTILATION STATION

The GlassGuard™ table top ventilation station is a compact, easy to install solution for less demanding laboratory activities which require ventilation. It may be used for a variety of smaller scale activities including weighing and dispensing, package opening and various instructional activities.

The ventilation station uses considerably less exhaust air than a full-size chemical fume hood. Designed to mount on a suitable depth counter top. The GlassGuard™ is supplied with the following standard features:



Assembly - Table top fume hood is 32" high by 30" deep.

Exhaust Collar - 6" round plastic exhaust duct for connection to laboratory exhaust system or remote fan (not included).

Duct Connection - Exhaust duct connection may be changed on site to be exhausted up or down.

Pivoting Sash - The sash pivots upward to access work chamber providing a vertical opening height of 19".

User Friendly - Upward pivoting sash is sloped 20° to allow user to overlook the working area.

Laminated Safety Glass - Sides, top and sash provide a well-lit workspace with excellent visibility and impact resistance.

Sash Opening - When the sash is down for operation, the opening is 9".

Interior Workspace - Usable interior workspace depth is 23". Work top not included.

Airfoil - Compact raised airfoil across front of countertop directs air rearward.

Cord Pass-Through - Two utility ports allow equipment cords to pass through and be plugged in elsewhere.

Lighting - Optional LED lighting powered by an external low voltage power supply, delivers bright light to the workspace.

Base Configurations - Place on any suitably sized flat benchtop; Mott offers a full line of cabinets and tables that are designed as perfect base assemblies.

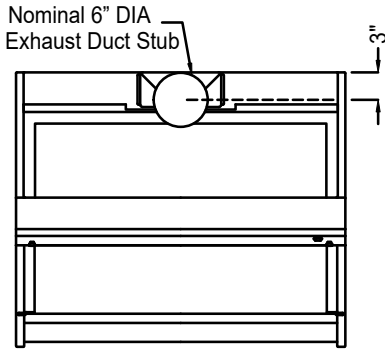
Performance - Factory tested to ASHRAE 110-2016 and exceeds industry standards for containment.

Part Numbers				
Width	With No Lights	With LED Lighting	Exhaust Volume*	Static Pressure
24"	GVS0024	GVS1024	160 CFM	0.15
30"	GVS0030	GVS1030	200 CFM	0.20
36"	GVS0036	GVS1036	250 CFM	0.25
48"	GVS0048	GVS1048	330 CFM	0.35

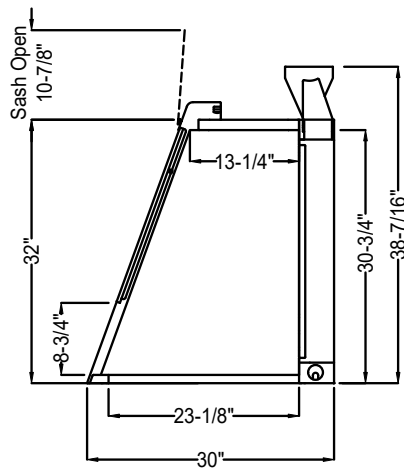
* Based on a face velocity of 100 FPM

GLASSGUARD™ VENTILATION STATION

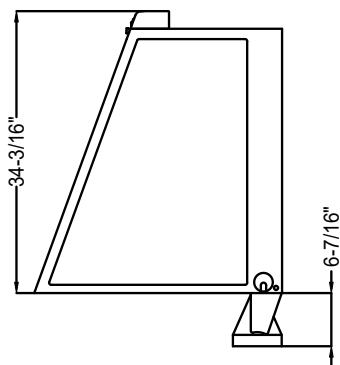
Typical Roof Details



Side Section Details - Duct Connection Up



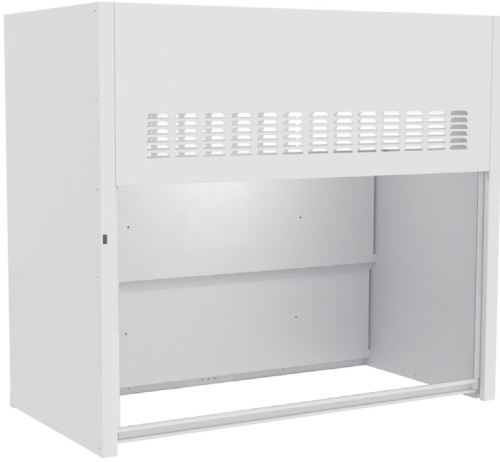
Side View Details Duct Connection Down



Note: Duct connection ships loose when duct connection is down.

SELECT VENTILATED WORKSTATION - VERTICAL SASH EXHAUST DEVICE

This cost effective ventilation workstation is designed to meet the requirements of some non-hazardous laboratory applications. Designed to mount on a 30" deep counter top. This hood meets basic laboratory Constant Air Volume (CAV) or Variable Air Volume (VAV) requirements. For VAV, use option S2 for restricted by-pass panel. The Select Ventilated bench mounted workstation is supplied with the following standard features:



Construction - 2" wide space saving thin wall construction. Counterbalance System - High quality stainless steel cable system provides economical and reliable operation; tested to 100,000 cycles with no failure.

Sash Design - 6mm laminated safety glass is provided with a stainless steel handle and side runners. Hoods are provided with a vertical rising sash. Note: sash closes 1" above the counter top.

Stainless Steel Type 316 Exhaust Collar - Round collar with radiused corners allows for direct connection to exhaust duct to reduce duct transition costs, minimize static pressure losses and exhaust noise levels.

Electrical - UL/CSA approved LED light module and switch provided.

Access Panels - Exterior side panels are removable.

Note: Unit is not UL or CSA approved.

Vertical Raising Sash

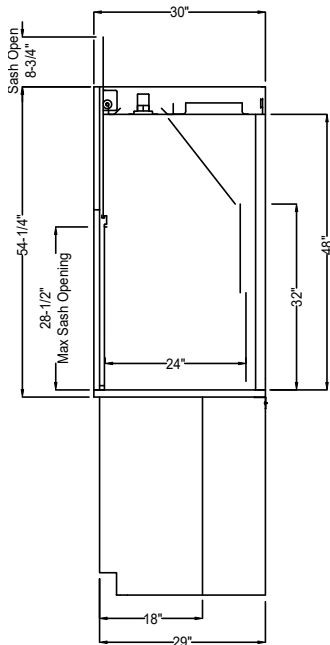
Width	Part Number
36"	VWS0036
48"	VWS0048
60"	VWS0060
72"	VWS0072
96"	VWS0096
1000mm	VWS000B
1513mm	VWS000C

Exhaust Parameters

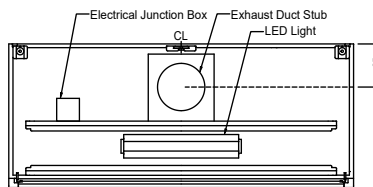
Hood Size	Duct Diameter	100 FPM 18" Max Sash Opening		100 FPM 28-1/2" Max* Sash Opening		80 FPM 18" Max Sash Opening		80 FPM 28-1/2" Max* Sash Opening	
		CFM	SP	CFM	SP	CFM	SP	CFM	SP
36"	10"	400	0.05	633	0.14	320	0.04	507	0.09
48"	10"	550	0.10	871	0.25	440	0.06	697	0.17
60"	12"	700	0.08	1109	0.20	560	0.05	887	0.13
72"	12"	850	0.12	1346	0.30	680	0.08	1077	0.19
96"	2 @ 10"	1150	0.12	1821	0.28	920	0.07	1457	0.18
1000mm	10"	442	0.07	700	0.17	354	0.05	560	0.10
1513mm	12"	693	0.08	1099	0.20	555	0.05	879	0.13

* 28-1/2" max sash opening is recommended for set-up and tear down only.

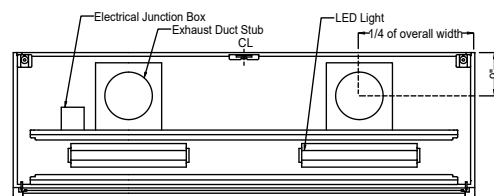
Side Section Details



Typical Roof Details

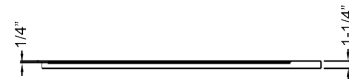
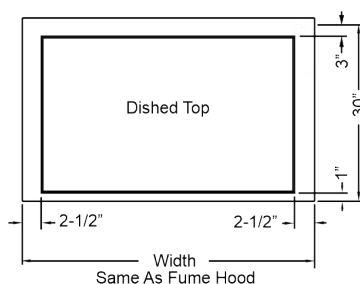


Single Collar Rough-In



Dual Collar Rough-In

Work Surface Details



SPRAY BOOTH

EXHAUST DEVICE

This spray booth is designed for simple nontoxic exhaust operations. Designed to mount on a 24" deep counter top, the hood is designed to be used with a Constant Air Volume exhaust system and does not include a fan. The spray booth bench mounted unit is supplied with the following standard features:



Construction - Steel, thin wall construction with laboratory grade powder coating. Supplied with integrated steel bottom for easier cleaning. Air filter provided.

Steel Exhaust Collar - Round collar allows for direct connection to exhaust duct.

Electrical - UL/CSA approved LED light module (24" wide unit supplied with a globe style LED light fixture). To be field wired to remote switch.

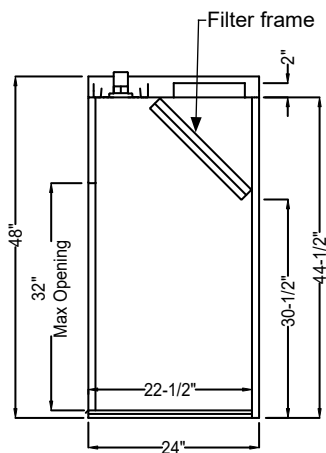
Note: Unit is not UL or CSA approved.

Spray Booth Width	Part Number
24"	8101000
30"	8201000
36"	8301000
48"	8401000
60"	8501000

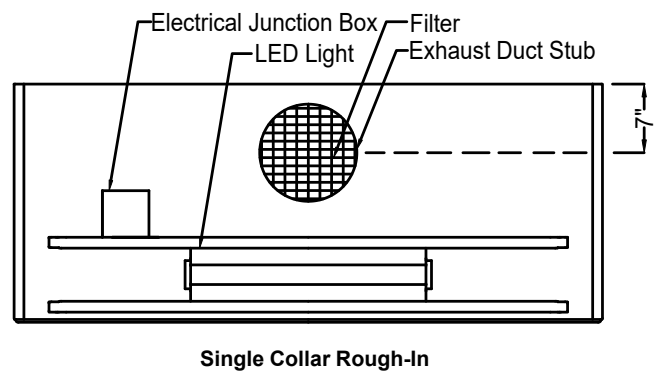
Exhaust Parameters

Hood Size	Duct Diameter	100 FPM 33" Max Opening	
		CFM	SP
24"	10"	505	0.05
30"	10"	642	0.80
36"	10"	780	0.80
48"	10"	1055	1.00
60"	10"	1330	1.00

Side Section Details



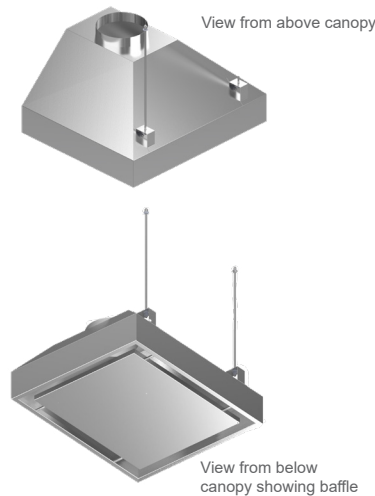
Typical Roof Details



WALL & ISLAND CANOPIES

EXHAUST DEVICE

Exhaust canopies are primarily used to exhaust steam, odors, and heat in a work area where the expense and capabilities of a fume hood are not justified.



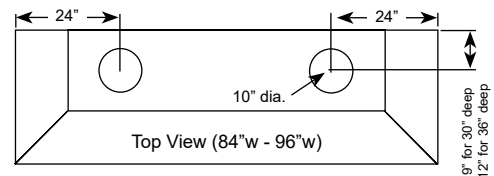
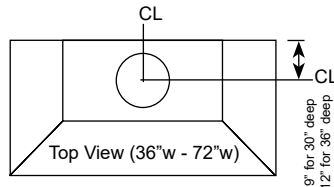
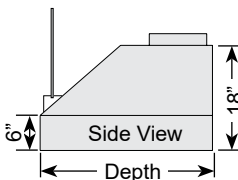
- Available in either wall or island configurations
- Available in powder coated steel, type 304 and 316 stainless steel
- Integrally welded construction
- Integral continuous condensation catch edge
- Integral duct stub
- Steel rod suspension
- Standard baffle is suspended on rods and is even with the bottom of the canopy providing a 2" wide perimeter airflow gap (not available with LED light option)
- Actual exhaust requirements should be calculated in accordance with ACGIH, taking into account the heat load and type of vapor being generated

Optional Light Fixture

- Use option code E6 for UL/CSA approved canopy LED light
- Baffle not available when ordering LED light
- Wire from light to junction box is not concealed

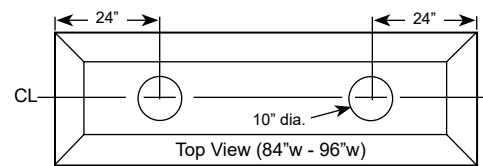
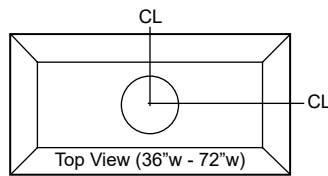
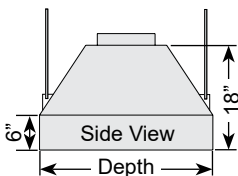
Wall Canopy Hoods

Width	Duct Diameter	30" Deep	36" Deep
36"	10"	CWP1236	CWP1336
48"	10"	CWP1248	CWP1348
60"	12"	CWP1260	CWP1360
72"	12"	CWP1272	CWP1372
84"	2 @ 10"	CWP1284	CWP1384
96"	2 @ 10"	CWP1296	CWP1396
1000mm	10"	CWP120A	CWP130A
1513mm	12"	CWP120B	CWP130B
2000mm	12"	CWP120C	CWP130C



Island Canopy Hoods

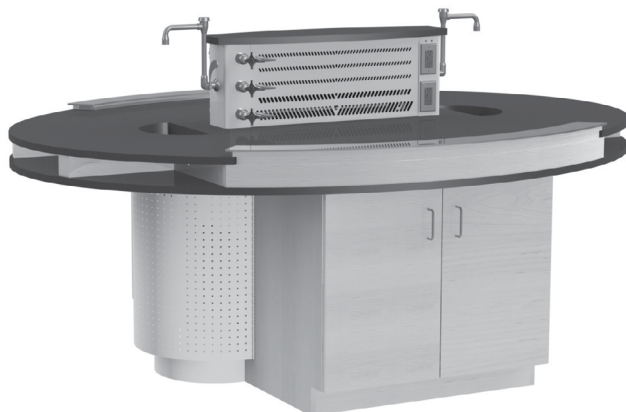
Width	Duct Diameter	30" Deep	36" Deep
36"	10"	CIP1236	CIP1336
48"	10"	CIP1248	CIP1348
60"	12"	CIP1260	CIP1360
72"	12"	CIP1272	CIP1372
84"	2 @ 10"	CIP1284	CIP1384
96"	2 @ 10"	CIP1296	CIP1396
1000mm	10"	CIP120A	CIP130A
1513mm	12"	CIP120B	CIP130B
2000mm	12"	CIP120C	CIP130C



OVAL AIR STATION

EXHAUST DEVICE

Oval Air Stations provide a ventilated downdraft workstation for student experiments. Workstations pull air, odors, vapors, and aerosols when connected to a building exhaust system.

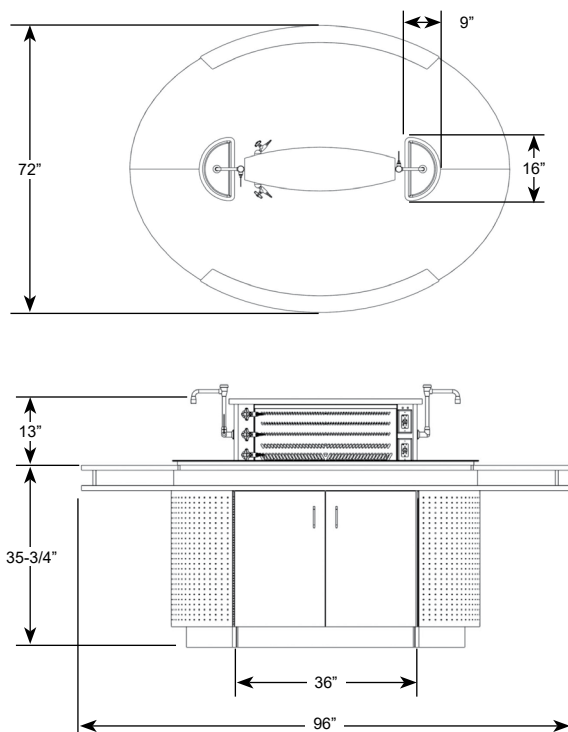


A HED vision, engineered by Mott

Exhaust Parameters

Duct Size	CFM	SP
3" x 10"	350	0.2

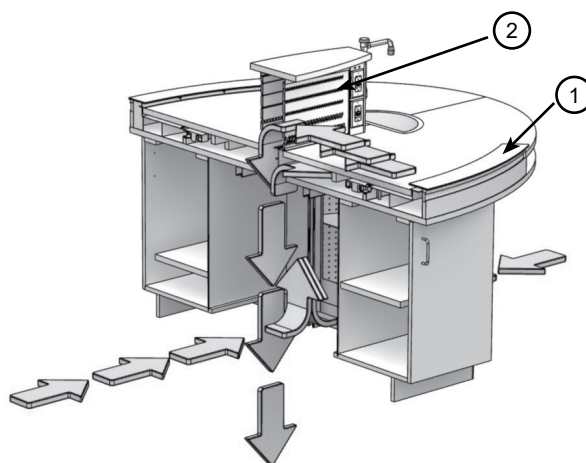
Details



Item Number

OAS1096

- Overall assembly is 96" wide x 72" deep x 48-3/4" high with work surface located at 35-3/4" high
- Two 36" wide Maple (with Natural stain) Full Flush Overlay door cabinets with removable backs provided. Each cabinet has one adjustable shelf. Stainless steel wire pulls and hinges provided. Powder coated steel cabinets are an available option.
- Push fan provides constant airflow and is housed in a drawer which is removable with push pin locks to allow for easy cleaning in case of a spill
- Removable type 304 stainless steel perforated access panels for easy accessibility to electrical and plumbing components, makes installation and maintenance easy
- Three fixtures (Vacuum, Air and Gas), plus cold water provided per side.
- Factory pre-wiring and pre-piping down is standard to utilities below
- 3 circuits is standard, one per 2 duplexes per side and one dedicated to the fans
- Two UL/CSA approved GFI 120v/20amp duplex receptacles provided per side; data an available option
- Indicator to alert users if main exhaust system shuts off
- Two single 16" long x 9" wide x 8" deep (ID), "D" shaped compartment sinks and two-tiered 1" thick black epoxy work surfaces provided
- 3" x 10" rectangular exhaust collar (exhaust transitions and dampers by others)
- Shipped unassembled



The push drawer (1) and exhaust housing (2) work together to capture fumes. The internal fan pushes air across the work surface towards the exhaust housing, then the exhaust housing pulls the supplied air down into the building exhaust system.

FORENSICS CABINET
EXHAUST DEVICE

Forensic cabinets provide protection from harmful fumes and odors generated during the treatment of evidence material. These cabinets provide a controlled environment for the processing of latent fingerprints on most nonporous surfaces while eliminating personnel exposure to hazardous cyanoacrylate fumes. The cabinets contain individually vented chambers of various sizes designed to minimize airflow. Reducing airflow makes the fuming process more effective.



*Lower base cabinet
ordered separately.

Construction Material - 45lb. density particle board core with chemical resistant high-pressure plastic laminate interior and exterior

Processing Chambers - Both counter top unit and floor mounted unit provide three chambers, each chamber can be operated separately

Security - Tamper proof self-latching stainless steel handles, type 304 stainless steel piano hinges and padlock hasp to protect evidence during the processing

Electrical - Cabinets are pre-wired to junction box located at top of unit. Four CSA/UL approved electrical outlets 120V 20AMP and one light switch. Power cord pass-throughs are provided in each chamber.

Lighting - Vapor proof LED lights

Safety - Chamber doors include laminated safety glass and vapor proof light fixtures in each chamber

Exhaust Venting - Counter top unit is provided with a 1-1/2" I.D. outlet and the floor unit is provided with a 2" I.D. outlet. Vent outlet protrudes 4" above the top of both cabinets at rear.

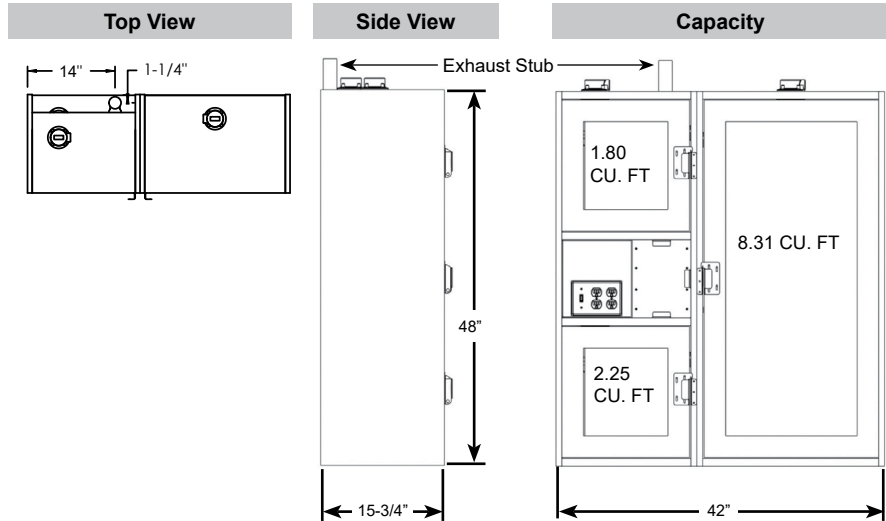
Convenience - Both cabinets include one adjustable type 304 stainless steel perforated shelf in larger chamber and a hanging rod in each chamber

FORENSICS CABINET

EXHAUST DEVICE

Counter Top Unit

Item Number	Capacity	Exhaust Volume	Exhaust Outlet Diameter
56F0030W	13 Cubic Feet	14 CFM	1.5" I.D.



Floor Mounted Unit

Item Number	Capacity	Exhaust Volume	Exhaust Outlet Diameter
66F0030W	31 Cubic Feet	31 CFM	2" I.D.

