



new england lab®
lab-tested furniture systems

STARSYS™

MOBILE, MODULAR
WORKCENTERS



Lab Solutions

We put space to work.™

METRO STARSYS™

Reinvent your lab.
Mobile, modular,
highly-adaptive system,
enhances lab productivity
and space efficiency by empowering
the end user with the ability to
easily reconfigure and
move units around the lab.



MOBILE, MODULAR WORKCENTERS



The Starsys™ Modular System creates flexible space.

No matter what you need — open, closed, short, tall, stationary, preconfigured workcenters, mobile units — Starsys has the elements for you. With Starsys, you choose from an array of modular units to fit the space and work specifications. It's that easy.

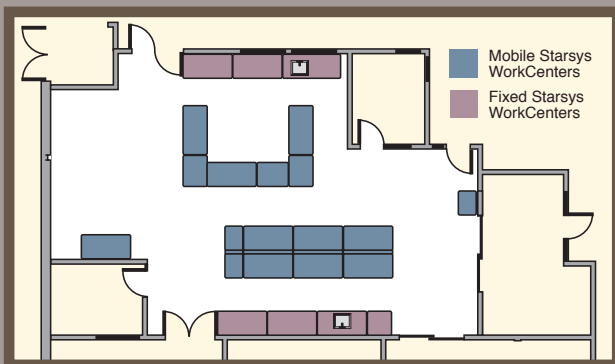
And that flexible.

Starsys Benefits:

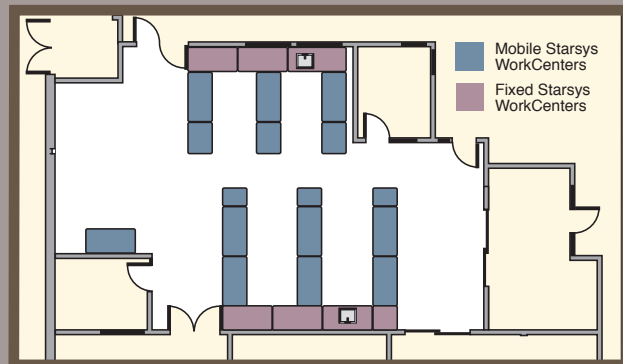
- Facilitates fast, efficient lab installation.
- The ability to easily reconfigure lab furniture layout as needs change.
- The ability to easily reconfigure unit design.
- Flexibility to design a storage solution to exact needs.
- Corrosion-proof polymer components for a contamination-free product.
- Durable, easy-to-clean, polymer enclosures that won't chip, peel, dent, or rust — ever.
- Rigid aluminum and coated metal substructure, combined with advanced polymers, provide a robust, stable work environment for even the most sensitive equipment.
- A high level of organization.
- Easy access to supplies.
- Greater storage density in a smaller footprint.



Research Lab . . .



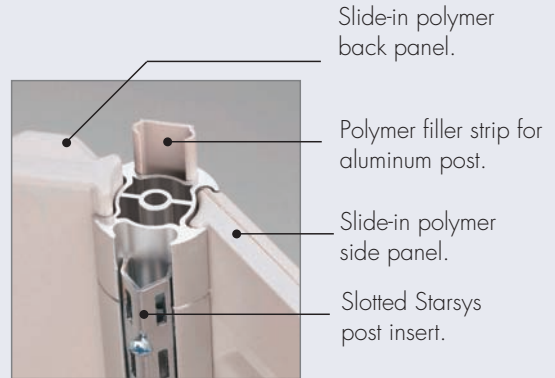
Research Lab, 5 minutes Later...



Note: The Starsys System features advanced polymer materials that offer excellent chemical resistance. To obtain a complete Starsys chemical resistance report, please contact your local Metro representative.

Starsys innovation

comes in the form of a unique material construction. Interior extruded aluminum posts and robust steel frame provide strength and durability. Exterior advanced polymer shell is chip, dent, rust resistant and easy to clean. Starsys is built to last the test of time.



“THE QUALITY OF THE MATERIALS IS EXCEPTIONAL—
WE ALWAYS GOT OUR
DOLLARS WORTH
WITH STARSYS.”



Starsys extruded aluminum posts for strength and durability.

Weighted base eliminates tipping hazard.

Epoxy-coated steel frame provides strength and durability.



Overhead cabinets can be configured with polymer or wire shelves, depending upon application requirements.

Robust aluminum uprights provide secure mounting for overhead cabinets.

Epoxy work surface rated at 900 lbs.

Advanced polymer shell is chip, dent, rust resistant and easy to clean.

“STARSYS IS PERFECT—IT’S A FLEXIBLE SOLUTION WHEN WE’RE DEALING WITH SO MANY UNKNOWNNS.”



Overhead cabinet shelves are removable, easy-to-clean, and are available in both solid polymer and epoxy-coated, open-wire shelf designs.

Starsys mobile workcenter units can be specified with or without overhead cabinets attached. Available overhead heights include 24", 27", 30", 36" and 48".

Overhead cabinet accessories include light fixture, cassette bins for small item storage and organization, and poly shelf dividers.

Overhead cabinets can be specified with a variety of available doors, clear or solid style, locking or non-locking. Contact your Metro representative for more information.

Epoxy resin counter tops come standard with Starsys mobile, pre-configured workcenter units. Other counter top materials such as stainless steel, colored laminates, phenolic, and hardwoods are also available on request.

Door handle detail is GMP compliant and can be accented with choice of 8 available colors.

Drawer pull is GMP compliant and can be accented with choice of 8 available colors.

Starsys Doors, available in multiple heights, can be specified with or without window, as well as locking and non-locking.

Starsys drawer options include choice of polymer drawers (3", 4½", 6", 7½", 9", 10½", and 12" heights) or heavy-duty drawers (3", 6", 9" and 12" heights), featuring stainless steel drawer interior, load-rated at 150 lbs. per drawer. Heavy-duty drawers are available in both single- and double-wide modules.

5" polyurethane plate casters, two with brakes, make unit easy to maneuver in tight lab spaces. Other caster options are shown below.

3" Total-Lock Caster:
Utilize 3" total-lock plate casters for limited mobile applications or when additional storage area is required.



5" Total-Lock, All-Polymer Caster:
Recommended for corrosive environments. All-polymer total-lock plate caster is an economical alternative to stainless casters.



Stabilizer/Leveling Caster:
Recommended for applications where bench top equipment demands unit stability and/or a level work surface. Engage caster foot for stability, release for mobility.



Note: The Starsys System features advanced polymer materials that offer excellent chemical resistance. To obtain a complete Starsys chemical resistance report, please contact your local Metro representative.

METRO Lab Solutions



Easy to clean advanced polymer material is a marked improvement over traditional metal carts: won't dent, chip, rust, flake or corrode.

Molded ergonomic handle is easy to grip.

Interchangeable 3", 6" and 9" (76, 150 and 230mm) drawers with removable totes can be fully extended for easy access.

Side storage allows easy customization of a wide variety of accessories from trash can and Sharps container to storage bins and shelves.

Label holders available to quickly identify drawer contents.

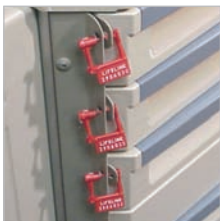
The convenient overbridge can be fitted with a wide selection of baskets, shelves, and bins to keep necessary items within reach.

Swing-out Side Storage units increase work surface up to 135%.

Color-coded drawer pulls are available in an array of choices to fit any system or decor.

5" (127mm) polyurethane casters with easily accessed toe brake make for easy rolling.

G R E A T E R S E C U R I T Y



Passive security is provided by security seals which provide the visual assurance that the cart's contents have not been compromised.



Cart security can be maintained manually with key locks, allowing only authorized personnel access to drawers. Key lock allows for key alike/different scenarios and features a removable core to allow security updates.



Optional touchpad-operated security system electronically unlocks the cart drawers without keys. Programmable features include access code, and user-defined time intervals for automatic locking and tamper resistance.



For an added level of security, this locking drawer assembly is available in 3", 6" and 9" (76, 150 and 230mm) heights.

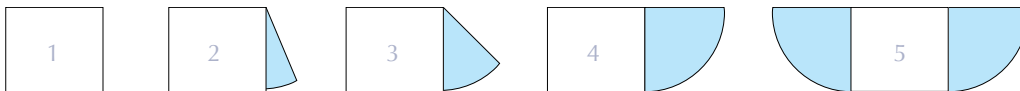


SIDE STORAGE UNITS

We've tried to think of practically everything. Even a revolutionary way to gain workspace and create easier access almost out of thin air.

The small unit footprint maximizes storage, yet takes up less floor space. Notice the revolutionary side storage units. They conveniently swing out when needed, then close back into the cart reducing the footprint and providing a handle for maneuverability.

Overhead view of how to create 135% more work-top space and gain greater access to storage.



Handy tilt-out bins fitted to side storage units can be prestocked with lab supplies.

“WE PLAN FOR CHANGE—STARSYS IS A SYSTEM THAT CAN ADAPT TO MY NEEDS—TODAY, AND DOWN THE LINE.”

METRO Lab Solutions



Here's a brief sampling of our
Mobile WorkCenters.

To find more information,
to view the entire selection
of available standard units, or to
design a unit

for your unique application, visit
www.starsysconfigurator.com



Starsys WorkCenters
are designed to be reconfigured.
Modular components —
doors, drawers, adjustable shelves,
full extension shelves, even colors
and accessories, can be interchanged
to create a highly adaptable solution.
One that works.



“METRO IS A RELIABLE COMPANY—THEY SURE HIT
THE FRONT OF THE CURVE WITH POLYMERS AND
INNOVATIONS IN LAB DEVELOPMENT.”



Short or tall, narrow or wide,
polymer, wire or mixed configurations.
You can create the exact
cart to meet your exact needs. The
components are
interchangeable, they
support a high degree of change.



“THE VERSATILITY OF THE SYSTEM AND QUALITY
OF MATERIALS ARE OUTSTANDING—IT SEEMS LIKE
IT WILL LAST FOREVER.”



Wall-mounted overheads: Available in single- or double-wide, clear or solid doors, polymer or wire shelves, and can be easily relocated along wall rail.



Tambour door overhead in a single-wide module can be accessorized using tilt-out bin, shelves, and light.



Cassette storage is ideal for small items, and can be combined with cart or overhead cabinet options.



Full extension baskets and totes provide easy access and retrieval.



Overbridge and accessories keep work surface clear of supplies and equipment.



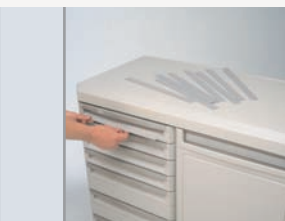
Sloped tops, single and double-wide, are available for wall-mounted and stationary applications.



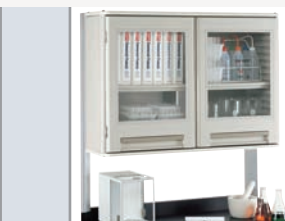
Roll-up tambour doors and adjustable shelves installed in side storage units allow storage of various size items.



Accessory handle is ergonomically designed to easily maneuver a cart.



Color-coded drawer pulls are available in an array of choices to fit any system or decor.



Clear doors provide visual access while protecting contents from environment.



Removable drawer totes allow for replenishment system.



Drawers are easily repositioned without tools.



Full extension drawers provide complete access to contents.



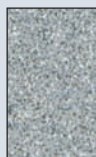
Drawer dividers are available to organize your supplies for easy access.



Polymer shelves are easy to clean and reposition.



Full extension shelves maximize storage capacity.



Slate Blue Laminate



Jade Laminate



Black Epoxy

Note: Requests for Stainless, solid surface, and other top materials can also be accommodated. Please contact your Metro Representative for additional information.

Starsys WorkCenter Counter Tops

Door/Drawer Handles The design selection includes:



Slate Blue



Jade



Mauve



Code Blue



Dark Taupe



Yellow



Black



Red

metrolabsolutions.com



We put space to work.™

InterMetro Industries Corporation
651 North Washington Street, Wilkes-Barre, PA 18705
570-825-2741 • 1-800-433-2232



ISO REGISTERED
9 0 0 1 - 9 0 0 2

© 2007 InterMetro Industries Corporation
Starsys is a Trademark of InterMetro Industries Corporation.

L03-190A
Rev. 2/07