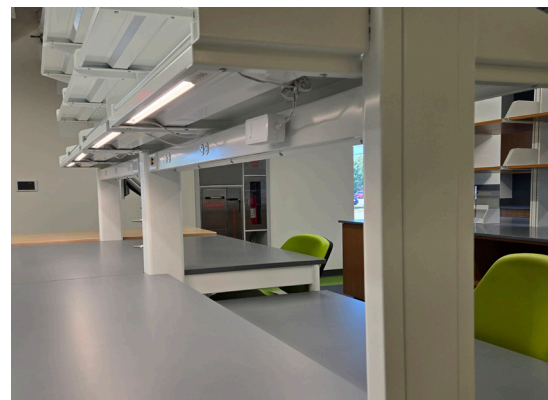


flexible illumination

advanced motion intelligence

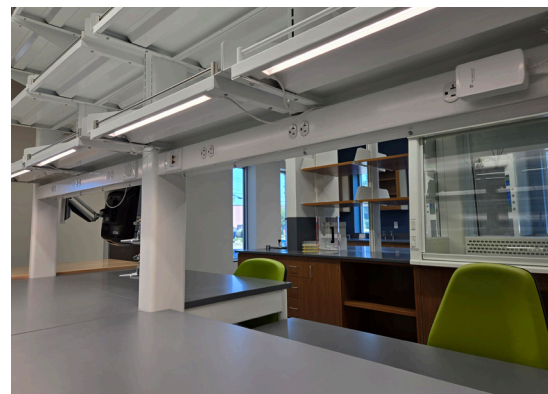
The Brightedge® Portable LED Lighting System is a task light designed to save energy as part of an ambient lighting solution. This light is designed for magnetic mounting to the underside of a lower lab bench shelf which allows for it to be moved around the lab as needed. It provides illumination that minimizes shadows with glare-free lighting that allows for more comfortable viewing of the research being conducted. The lighting has a high color rendering index (Typ 95 CRI) to help view colors as in natural sunlight. When used with the Advanced Occupancy Sensor, the system has built-in automation which in essence functions as both an occupancy and vacancy sensor to deliver extraordinary energy-saving control. Additionally, it has been designed with features like white cords and power supplies, magnetic wire management clips, and the ability to daisy-chain power and still maintain occupancy and dimming controls per unit. The Brightedge® Portable light fixture is designed specifically for the lab industry using feedback from our clients and is sure to meet your scientific task lighting requirements.



The high output LEDs are tightly spaced to reduce shadows



The Advanced Occupancy Sensor has programmable logic and can shut the light or itself off



Lights can be daisy chained and still maintain individual dimming and occupancy controls

flexible illumination

Light Housing

- Heavy-duty extruded aluminum with light cut-off, reflector and light lens/dust cover
- No visible fasteners, low profile
- Cords exit behind the fixture to hide connections
- Industrial grade finish
- Configurable length, maximized to shelf
- Magentic mounting

LED Lights

- High Quality custom LED arrays
- Tightly binned, highly efficient LEDs provide uniform color and brightness along the entire length of fixture and multiple fixtures
- LED tape assembled within housing to be maximized in length
- Close-pitch LED spacing to avoid shadows
- Delivers a minimum average of 50 fc to work surface located 20" below mounting position with uniform illuminance
- Maximum wattage: 4.5 watts per linear foot
- Light output from fixture: 435 lumens per linear foot
- Minimum Color Rendering Index (CRI): 95
- Correlated Color temperature to be 3500K, color shift over life of fixture to be maximum +/- 100K, other light temperatures available
- Minimum estimated life to 70% (TM-21) of light output: > 50,000 hours

Advanced Occupancy Sensor

- To work in conjunction with an on-board physical on/off switch
- When motion is detected, the LED light shall stay on
- When motion is not detected for 30 minutes, the light shall go off but turn on again with motion detection
- If motion is not sensed within 60 minutes, the motion sensor shuts off, requiring the physical switch to turn the light back on

Switching & Controls

- System can be purchased with the Advanced Occupancy Sensor and Dimming (BPOD), or with the physical switch only (BPSD)
- Non-switched fixtures can be ordered as "add-on units" when split shelving is utilized at the lab bench.
- When interconnecting fixtures, take care not to exceed the wattage rating of the selected power supply
- Dimming controls via two buttons, one that lowers and one that raises the light level
- Fixtures can have complex daisy chain options via two types of connection cords. One cord connects power only, and another cord connects power and controls.
- Daisy-chain feature uses up to 75% fewer outlets than other manufacturers typically require depending on lab bench layout. (even more savings with 90W power supply)

Power Supplies

- Fixture operates on 24VDC
- Fixtures can be purchased with a 60 Watt "Wall mount Style" or 90 Watt "Desktop Style" UL Listed power supply
- Wall mount style will be easier to hide/manage
- Fixtures can be daisy-chained up to the power supply wattage capacity

Additional Wattage

Shelf Length	Approximate Wattage
33"	12.4 Watts (4' Lab Benches) Daisy Chain up to 4 on 60W Power Supply
38"	14.3 Watts (5' Lab Benches split shelves) Daisy Chain up to 4 on 60W Power Supply
45"	16.9 Watts (5' Lab Benches) Daisy Chain up to 3 on 60W Power Supply
50"	18.8 Watts (6' Lab Benches split shelves) Daisy Chain up to 3 on 60W Power Supply
57"	21.4 Watts (6' Lab Benches) Daisy Chain up to 2 on 60W Power Supply

Configurations

Part Number BPOD-PW60-50.000		
		Length of Fixture (inches)
Switch Options	Power Options	XX= Watts
BPOD: Advanced Occupancy Sensor and Dimming	PW: Wall mount power supply included	60: Wall mount only
BPSD: On/off Switch and Dimming	PD: Desktop mount power supply included	90: Desktop style only
BPXX: No switch (controlled by BPOD or BPSD)	Daisy Chain Power Options	Cord Lengths
	2C: Power and Control Connection Cord	12: Cord Length in inches
	1C: Power only Connection Cord	18: Cord Length in inches

Timing Schedule

Turn Off Light	Turn Off Occupancy Sensor
30 min.	60 min.

Light Distribution Chart

