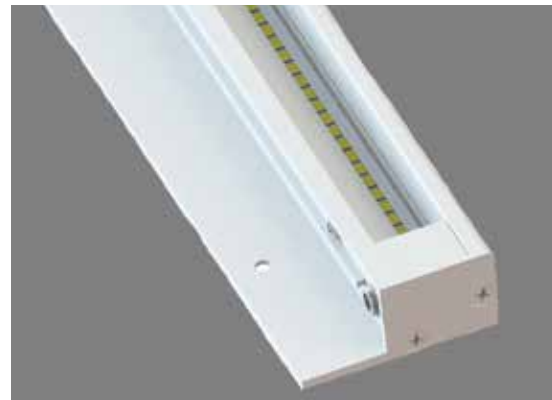


efficient illumination

advanced motion intelligence

The Brightedge® 2.0 LED Lighting System is a task light designed to save energy as part of an ambient lighting solution. This light is integrated into the entire front edge of an upper shelf to provide illumination that minimizes shadows with glare free lighting that allows for more comfortable viewing of the lab bench. The lighting has a high color rendering index (Typ 95 CRI) to help view colors as in natural sunlight. When used with the Advanced Occupancy Sensor, the system has built in automation which in essence functions as both an occupancy and vacancy sensor to deliver extraordinary energy saving control.



the high output LEDs are tightly spaced to reduce shadows



the Advanced Occupancy Sensor has programmable logic and can shut the light or itself off



the physical switch can be mounted on the bench at a variety of locations

efficient illumination

Light Housing:

- Two piece heavy-duty extruded aluminum with light cut-off, reflector and transparent light lens/dust cover
- No visible fasteners
- Industrial grade epoxy-urethane powder coat finish
- Length to match shelf length exactly, and 1" thickness

LED Lights

- High Quality custom LED arrays
- Tightly binned, highly efficient LEDs provide uniform color and brightness along the entire length of fixture and multiple fixtures
- LED tape assembled within housing to be maximized in length
- Close-pitch LED spacing to avoid shadows
- Delivers a minimum average of 50 fc to work surface located 4'-4" below mounting position with uniform illuminance
- Maximum wattage: 4.5 watts per linear foot
- Light output from fixture: 435 lumens per linear foot
- Minimum Color Rendering Index (CRI): 95
- Correlated Color temperature to be 3500K, color shift over life of fixture to be maximum +/- 100K
- Minimum estimated life to 70% (TM-21) of light output: > 50,000 hours
- All LEDs have equal light output regardless of bench/shelf length

Advanced Occupancy Sensor

- To work in conjunction with a physical on/off switch mounted in the bench as specified
- When motion is detected, the LED light shall stay on
- When motion is not detected for the specified preset length of time, the light shall go off but turn on again with motion detection
- First preset time interval can be field programmed to a minimum of 7 presets (see timing schedule below) which turns off the LED lights
- Second preset time interval can be field programmed to a minimum of 7 presets (see timing schedule below) which turns off the motion detector, requiring the physical switch to turn the light back on (vacancy timer)

Switching

- System can be purchased with the Advanced Occupancy Sensor (BOC2), with the physical switch only (BSW2), or can be non-switched (BSX2)
- Non-switched configuration can be plugged into a switched outlet by others (switched outlet can be controlled by a wall switch or a room occupancy sensor or any combination as designed by others)
- Non-switched configurations can be ordered as a "starter unit" and "add-on units" to reduce the number of power outlets required
- When interconnecting non-switched fixtures, take care not to exceed the wattage rating of the selected power supply

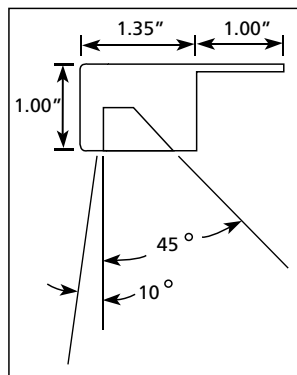
Power Supplies

- Fixture operates on 24VDC
- BOC2 and BSW2 come with a "Desktop Style" 36 Watt Class 2 UL Listed power supply
- BSX2 can be purchased with a 60 Watt "Wallmount Style" or 90 Watt "Desktop Style" Class 2 UL Listed power supply

Timing Schedule

Preset	Turn Off Light	Turn Off Occupancy Sensor
1	5 min.	18 min.
2	10 min.	27 min.
3	15 min.	40 min.
4	17 min.	45 min.
5	22 min.	58 min.
6	27 min.	67 min.
7	32 min.	85 min.

Light Distribution Chart



Configurations

Part Number		
BOC2-PD36-067.563		
Length of Fixture (inches)		
Switch Options	Power Options	PX= Watts
BOC2: Adv. Occ. Sensor & on/off switch	PD: Desktop mount Power supply included	36: BOC2 & BSW2 only
BSW2: On/off switch only	PW: Wall mount Power supply included	60: BSX2 wall mount only
BSX2: No switching/switching by others (starter units)		90: BSX2 desktop style only
BSX2: No switching/switching by others (add-on units)	IC: Interconnect cable only (indicates BSX2 add-on unit)	IC = Cord Length
		48: standard interconnect length in inches

Additional Wattage

Shelf Length	Approximate Wattage
30"	11.25W
36"	13.5W
42"	15.75W
48"	18W
54"	20.25W
60"	22.5W
66"	24.75W
72"	27W
78"	29.25W
84"	31.5W