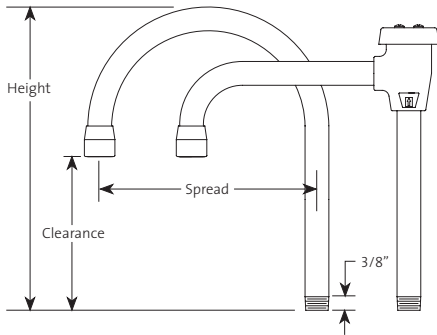


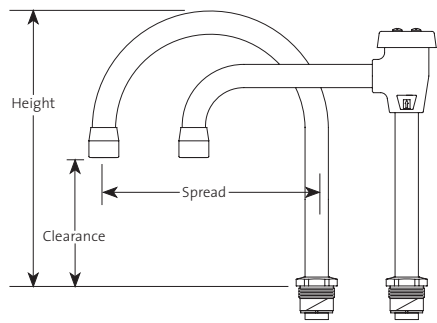
WaterSaver goosenecks are fabricated of 3/8" IPS heavy wall brass tubing for maximum strength and durability. Rigid goosenecks have a 3/8" NPT male inlet to thread directly into the top of the faucet body. Swing goosenecks have a braided PTFE packing with an adjustable packing nut. The packing nut has a 1"-22 thread to fit into faucet bodies machined with a mating female thread. Rigid / swing goosenecks have a union-style construction for field conversion from rigid to swing and vice versa.

Goosenecks are offered with integral vacuum breakers to prevent backflow. Vacuum breakers have an ultra-light float cup to prevent spillage under extreme low flow conditions. Vacuum breakers are certified to comply with ASSE Standard No. 1001 and CSA Standard CAN / CSA-864 Series – M88 and are covered U.S. patent number 6,123,095.



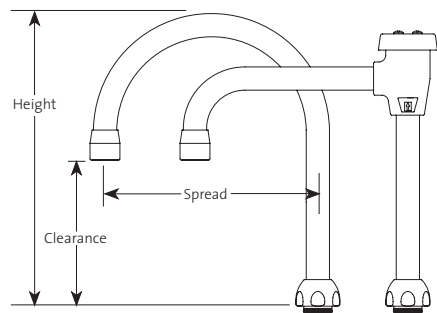
Rigid Goosenecks

	Spread	Height	Clearance
RG6	6" (152 mm)	8" (203 mm)	3-7/8" (98 mm)
RG8	8" (203 mm)	8-7/8" (225 mm)	3-7/8" (98 mm)
RG9	9" (229 mm)	8-7/8" (225 mm)	4-3/4" (121 mm)
RG10	10" (254 mm)	8-7/8" (225 mm)	4-3/4" (121 mm)
RG12	12" (305 mm)	8-7/8" (225 mm)	4-3/4" (121 mm)
RG6VB	6" (152 mm)	7-3/4" (197 mm)	4-1/8" (105 mm)
RG8VB	8" (203 mm)	7-3/4" (197 mm)	4-1/8" (105 mm)
RG9VB	9" (229 mm)	7-3/4" (197 mm)	4-1/8" (105 mm)
RG10VB	10" (254 mm)	7-3/4" (197 mm)	4-1/8" (105 mm)
RG12VB	12" (305 mm)	7-3/4" (197 mm)	4-1/8" (105 mm)



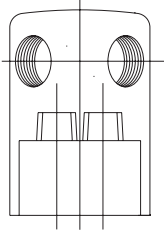
Swing Goosenecks

	Spread	Height	Clearance
SG6	6" (152 mm)	8" (203 mm)	3-7/8" (98 mm)
SG8	8" (203 mm)	8-7/8" (225 mm)	3-7/8" (98 mm)
SG9	9" (229 mm)	8-7/8" (225 mm)	4-3/4" (121 mm)
SG10	10" (254 mm)	8-7/8" (225 mm)	4-3/4" (121 mm)
SG12	12" (305 mm)	8-7/8" (225 mm)	4-3/4" (121 mm)
SG6VB	6" (152 mm)	7-3/4" (197 mm)	4-1/8" (105 mm)
SG8VB	8" (203 mm)	7-3/4" (197 mm)	4-1/8" (105 mm)
SG9VB	9" (229 mm)	7-3/4" (197 mm)	4-1/8" (105 mm)
SG10VB	10" (254 mm)	7-3/4" (197 mm)	4-1/8" (105 mm)
SG12VB	12" (305 mm)	7-3/4" (197 mm)	4-1/8" (105 mm)



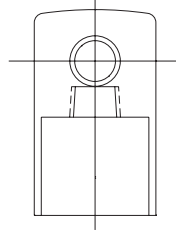
Rigid / Swing Goosenecks

	Spread	Height	Clearance
RS6	6" (152 mm)	8-1/2" (216 mm)	4-3/8" (111 mm)
RS8	8" (203 mm)	9-3/8" (238 mm)	4-3/8" (111 mm)
RS9	9" (229 mm)	9-3/8" (238 mm)	5-1/4" (133 mm)
RS10	10" (254 mm)	9-3/8" (238 mm)	5-1/4" (133 mm)
RS12	12" (305 mm)	9-3/8" (238 mm)	5-1/4" (133 mm)
RS6VB	6" (152 mm)	8-1/4" (210 mm)	4-5/8" (117 mm)
RS8VB	8" (203 mm)	8-1/4" (210 mm)	4-5/8" (117 mm)
RS9VB	9" (229 mm)	8-1/4" (210 mm)	4-5/8" (117 mm)
RS10VB	10" (254 mm)	8-1/4" (210 mm)	4-5/8" (117 mm)
RS12VB	12" (305 mm)	8-1/4" (210 mm)	4-5/8" (117 mm)



BI064-2A Deck mounted double service turret base. (2) 1/4" NPT female inlets, (2) 3/8" NPT female outlets at 90 degrees.

BI064-2S Same as above except outlets are at 180 degrees.

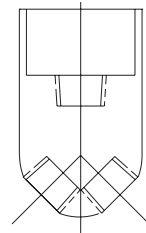


BI131 Deck mounted turret base. 3/8" NPT female inlet, single 3/8" NPT female outlet.

BI132A Same as above except with two outlets at 90 degrees.

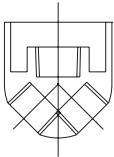
BI32S Same as above except with two outlets at 180 degrees.

BI134 Same as above except with four outlets.



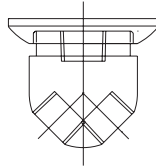
BI148 Overhead carrier/wall mounted turret base. 3/8" NPT female inlet, single 3/8" NPT female outlet.

BI148-2S Same as above except with two outlets at 180 degrees.



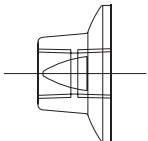
BI141 Panel mounted wye fitting. 3/8" NPT female inlet, (2) 3/8" NPT female outlets at 90 degrees.

BI141A Same as above except with single outlet.



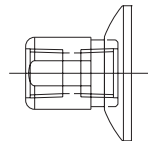
BI141FT Panel mounted wye fitting with floating escutcheon. 3/8" NPT female inlet, (2) 3/8" NPT female outlets at 90 degrees. Furnished with threaded escutcheon.

BI141A-FT Same as above except with single outlet.

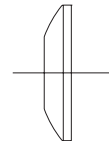


BI158 Panel mounted flange. 3/8" NPT female inlet and outlet.

BI159 Same as above except with 1/2" NPT female inlet and outlet.

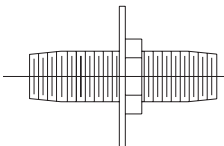


BI158FT Panel mounted flange with floating escutcheon. 3/8" NPT female inlet and outlet. Furnished with threaded escutcheon.



BI225 Threaded escutcheon. 3/8" IPS female thread.

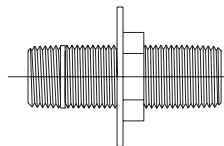
BI32S Same as above except with 1"-18 female thread.



BI136-02-08R 3/8" IPS mounting shank with locknut and washer. 3/8" IPS × 2-1/2" OAL.

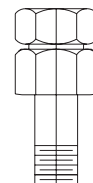
BI136-03-08R Same as above except 3-1/2" OAL.

BI136-04R Same as above except 4" OAL.



BI137-02-08R 1/2" IPS mounting shank with locknut and washer. 1/2" IPS × 2-1/2" OAL.

BI37-03-08R Same as above except 3-1/2" OAL.

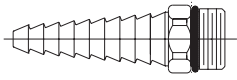


BI085AS Inlet fitting assembly. 3/8" NPT female adaptor with 1/4" IPS tailpiece and coupling nut.

BI085AS-TL Same as above except tin-lined for pure water.

BI086AS Same as above except with 1/2" NPT female adaptor.

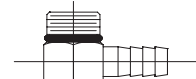
Outlet Fittings



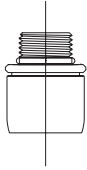
BO1405-G Straight ten serration hose end for gases. 3/8" NPS male inlet.



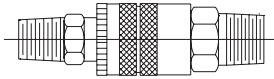
BO1405-W Anti-splash straight seven serration hose end for water. 3/8" NPS male inlet.



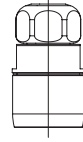
BO1275 Aspirator. 3/8" NPS male inlet.



BO055 Aerator. 3/8" NPS male inlet.



BO188 Quick connect fitting. 3/8" NPT male inlet, 1/4" NPT male outlet.

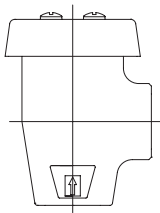


BO124 Splash eliminator for use with BO1275 aspirator.

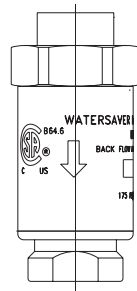
BO055FC Same as above except with internal flow control. Specify flow rate in GPM when ordering.

BO055VR Same as above except vandal-resistant.

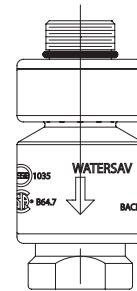
Vacuum Breakers



L100 Atmospheric vacuum breaker. ASSE-certified under Standard 1001. 3/8" NPT female inlet and outlet.

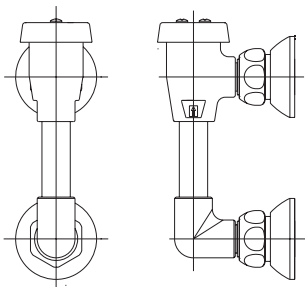


L108 Dual check backflow preventer. For continuous pressure applications. ASSE-certified under Standard 1024. 3/8" NPT female inlet and outlet.

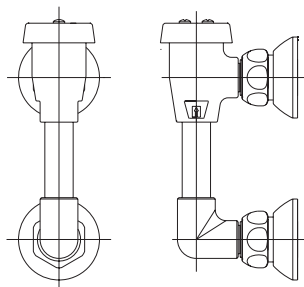


L110 Dual check vacuum breaker. ASSE-certified under Standard 1035. 3/8" NPS male inlet, 3/8" NPT female outlet.

L101 Same as above except with 1/2" NPT female inlet and outlet.



L102 Atmospheric vacuum breaker for panel or wall mounting. 1/2" NPT female inlet and outlet.



L112 Atmospheric vacuum breaker for panel or wall mounting. 3/8" NPT female inlet and outlet.

L102WSA Same as above except with 1/2" IPS × 2-1/2" OAL mounting shanks, locknuts and washers.

L112WSA Same as above except with 3/8" IPS × 2-1/2" OAL mounting shanks, locknuts and washers.