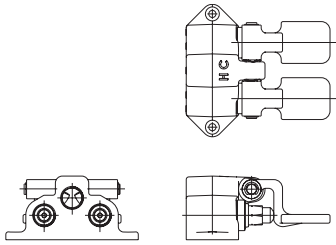


### L3001

Foot-Operated Mixing Valve



**Application:** Floor mounted foot-operated valve for hot and cold water.

**Body:** Forged brass with polished chrome plated finish.

**Valve Units:** Self-closing renewable units with stainless steel valve stems.

**Pedals:** Forged brass pedals mounted on hinged bracket.

**Inlets:** (2) 1/2" NPT female inlets.

**Outlet:** 1/2" NPT female outlet.

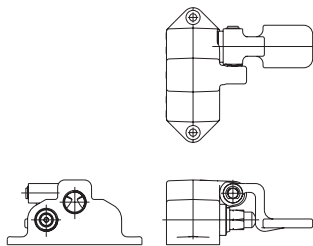
**Quality Assurance:** Valve is fully assembled and factory tested prior to shipment.

**Additional Model**

**L3001LP** Same as above except with extended pedals for ledge mounting.

### L3050

Foot-Operated Single Valve



**Application:** Floor mounted foot-operated valve for cold, hot or tempered water.

**Body:** Forged brass with polished chrome plated finish.

**Valve Unit:** Self-closing renewable unit with stainless steel valve stem.

**Pedal:** Forged brass pedal mounted on hinged bracket.

**Inlet:** 1/2" NPT female inlet (back).

**Outlet:** 1/2" NPT female outlet (top).

**Quality Assurance:** Valve is fully assembled and factory tested prior to shipment.

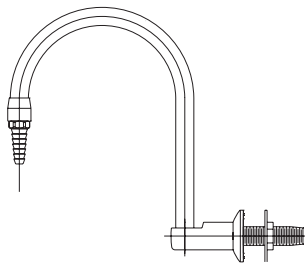
**Additional Models**

**L3050LP** Same as above except with extended pedal for ledge mounting.

**L3050TL** Same as above except tin-lined for use with pure water.

### L071WSA

Gooseneck, Panel Mounted



**Application:** Panel mounted gooseneck for use with foot-operated valve.

**Body:** Brass bar stock.

**Gooseneck:** 6" rigid gooseneck with 3/8" NPS female outlet and removable anti-splash serrated hose end.

**Inlet:** 3/8" NPT male inlet. Furnished complete with locknut and washer.

**Quality Assurance:** Fixture is fully assembled and factory tested prior to shipment.

**Additional Models**

**L072WSA** Same as above except with swing gooseneck.

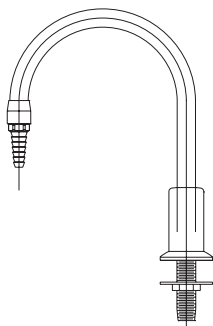
**L074WSA** Same as above except with convertible rigid / swing gooseneck.

**Note:** *If vacuum breaker is required, add suffix "VB".*

*If tin-lining for use with pure water is required, add suffix "TL".*

### L081WSA

Gooseneck, Deck Mounted



**Application:** Deck mounted gooseneck for use with foot-operated valve.

**Body:** Brass bar stock.

**Gooseneck:** 6" rigid gooseneck with 3/8" NPS female outlet and removable anti-splash serrated hose end.

**Inlet:** 3/8" NPT male inlet. Furnished complete with locknut and washer.

**Quality Assurance:** Fixture is fully assembled and factory tested prior to shipment.

**Additional Models**

**L082WSA** Same as above except with swing gooseneck.

**L084WSA** Same as above except with convertible rigid / swing gooseneck.

**Note:** *If vacuum breaker is required, add suffix "VB".*

*If tin-lining for use with pure water is required, add suffix "TL".*

**Options for Goosenecks:**

**Gooseneck.** 8" spread gooseneck in place of 6" (add suffix "8"). For other gooseneck spreads and heights, please refer to page 54.

**Outlet.** BO055 aerator in place of serrated hose end (add suffix "55").