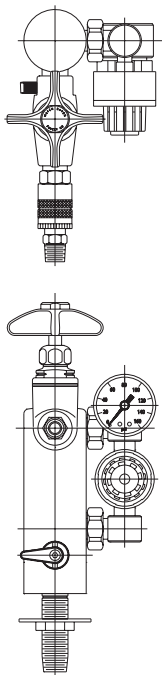


### L2873-771WSA

Pressure Regulator Fixture,  
Deck Mounted



**Application:** Point-of-use regulation of high purity gases. Used for compressed air and inert high purity gases, including nitrogen, helium, argon and oxygen. Pressure regulator has elastomer diaphragm and O-ring seals.

**Mounting:** Special tall turret with 3/8" IPS male heavy duty shank (assembled), locknut and washer. Pressure regulator mounts on side of turret to conserve counter space.

**Shut-off Valve:** Plug valve with lever handle on inlet of fixture for on / off control of service.

**Regulator:** Non-relieving type with brass body and neoprene diaphragm.

**Metering Valve:** Fine control needle valve for precise flow control. Valve has forged brass body, floating tapered stainless steel needle and replaceable stainless steel seat.

**Inlet Pressure Range:** 5-300 PSI.

**Outlet Pressure Range:** 5-125 PSI.

**Inlet:** 3/8" NPT male inlet.

**Outlet:** Removable quick connect fitting with 1/4" NPT male plug.

**Cleaning:** Fixture is specially cleaned, lubricated, assembled and packaged for use with high purity gases, including oxygen.

**Quality Assurance:** Fixture is fully assembled and factory tested prior to shipment.

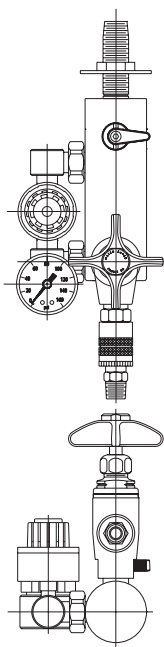
**Additional Models**

**L2873-771-2SWSA** Same as above except with two regulators and valves at 180 degrees.

**L2873-771-2AWSA** Same as above except with two regulators and valves at 90 degrees.

### L3173-771WSA

Pressure Regulator Fixture,  
Overhead Mounted



**Application:** Point-of-use regulation of high purity gases. Used for compressed air and inert high purity gases, including nitrogen, helium, argon and oxygen. Pressure regulator has elastomer diaphragm and O-ring seals.

**Mounting:** Overhead mounted tall turret base with 3/8" IPS male stainless steel shank (assembled), locknut and washer.

**Shut-off Valve:** Plug valve with lever handle on inlet of fixture for on / off control of service.

**Regulator:** Non-relieving type with brass body and neoprene diaphragm.

**Metering Valve:** Fine control needle valve for precise flow control. Valve has forged brass body, floating tapered stainless steel needle and replaceable stainless steel seat.

**Inlet Pressure Range:** 5-300 PSI.

**Outlet Pressure Range:** 5-125 PSI.

**Inlet:** 3/8" NPT male inlet.

**Outlet:** Removable quick connect fitting with 1/4" NPT male plug.

**Cleaning:** Fixture is specially cleaned, lubricated, assembled and packaged for use with high purity gases, including oxygen.

**Quality Assurance:** Fixture is fully assembled and factory tested prior to shipment.

**Additional Models**

**L3173-771-2SWSA** Same as above except with two regulators and valves at 180 degrees.

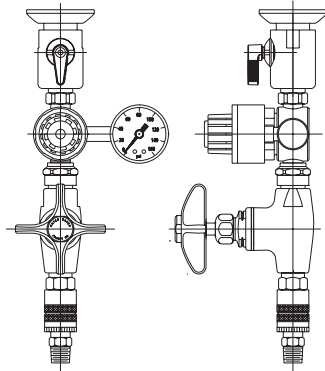
**L3173-771-2AWSA** Same as above except with two regulators and valves at 90 degrees.

**Options for Pressure Regulator Fixtures:**

**Outlet.** 1/4" OD compression fitting on outlet in place of quick connect (specify L2874 or L3174 valve).

### L2873-366V-758WS

Pressure Regulator Fixture,  
Panel / Overhead Mounted



**Application:** Point-of-use regulation of high purity gases. Used for compressed air and inert high purity gases, including nitrogen, helium, argon and oxygen. Pressure regulator has elastomer diaphragm and O-ring seals.

**Mounting:** Fixture is designed for vertical mounting on panel or overhead service carrier. Inlet flange has female inlet and floating escutcheon. Flange can be threaded onto nipple stubbed out of panel. Threaded escutcheon is then backed up to panel to secure fixture and conceal pipe. Alternatively, fixture can be secured to panel with 3/8" IPS heavy duty mounting shank, locknut and washer.

**Shut-Off Valve:** Plug valve with lever handle on inlet of pressure regulator for on / off control of service.

**Regulator:** Non-relieving type with brass body and neoprene diaphragm.

**Metering Valve:** Fine control needle valve for precise flow control. Valve has forged brass body, floating tapered stainless steel needle and replaceable stainless steel seat.

**Inlet Pressure Range:** 5-300 PSI.

**Outlet Pressure Range:** 5-125 PSI.

**Inlet:** 3/8" NPT inlet.

**Outlet:** Removable quick connect fitting with 1/4" NPT male plug.

**Cleaning:** Fixture is specially cleaned, lubricated, assembled and packaged for use with high purity gases, including oxygen.

**Quality Assurance:** Fixture is fully assembled and factory tested prior to shipment.

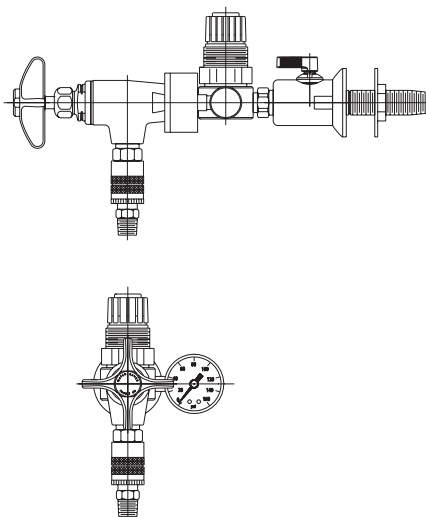
**Additional Model**

**L2873-366H-758WS** Same as above except for horizontal mounting.

*Note: If fixture for pipe mounting is desired, delete suffix "758WS." Fixture will be furnished with 3/8" NPT male inlet.*

### L3173-366-758WS

Pressure Regulator Fixture,  
Panel Mounted



**Application:** Point-of-use regulation of high purity gases. Used for compressed air and inert high purity gases, including nitrogen, helium argon and oxygen. Pressure regulator has elastomer diaphragm and O-ring seals.

**Mounting:** Fixture is designed for horizontal mounting on wall or panel. Inlet flange has female inlet and floating escutcheon. Flange can be threaded onto nipple stubbed out of wall. Threaded escutcheon is then backed up to panel to secure fixture and conceal pipe. Alternatively, fixture can be secured to panel with 3/8" IPS heavy duty mounting shank, locknut and washer.

**Shut-Off Valve:** Plug valve with lever handle on inlet of pressure regulator for on / off control of service.

**Regulator:** Non-relieving type with brass body and neoprene diaphragm.

**Metering Valve:** Fine control needle valve for precise flow control. Valve has forged brass body, floating tapered stainless steel needle and replaceable stainless steel seat.

**Inlet Pressure Range:** 5-300 PSI.

**Outlet Pressure Range:** 5-125 PSI.

**Inlet:** 3/8" NPT inlet.

**Outlet:** Removable quick connect fitting with 1/4" NPT male plug.

**Cleaning:** Fixture is specially cleaned, lubricated, assembled and packaged for use with high purity gases, including oxygen.

**Quality Assurance:** Fixture is fully assembled and factory tested prior to shipment.

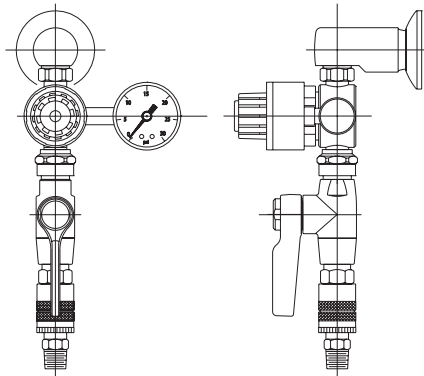
**Additional Model**

**L3173-366-741WS** Same as above except with two regulators and valves in panel mounted wye fitting.

*Note: If fixture for pipe mounting is desired, delete suffix "758WS." Fixture will be furnished with 3/8" NPT male inlet.*

### L4203-364-178FT

Pressure Regulator Fixture, Low Pressure / Carbon Dioxide, Wall Mounted Single



**Application:** Low pressure point-of-use regulation of carbon dioxide and high purity gases. Used for supplying CO2 to incubators, low pressure compressed air applications and low pressure inert high purity gases, including nitrogen, helium, argon and oxygen.

**Mounting:** Fixture is designed for vertical mounting on wall. Inlet flange has female inlet and floating escutcheon. Flange can be threaded onto nipple stubbed out of wall. Threaded escutcheon is then backed up to panel to secure fixture and conceal pipe. Alternatively, fixture can be secured to panel with 3/8" IPS heavy duty mounting shank, locknut and washer.

**Regulator:** Non-relieving type with brass body and neoprene diaphragm.

**Valve:** Ball valve for on / off control of flow. Valve has forged brass body, chrome plated brass ball and molded PTFE seals.

**Inlet Pressure Range:** 5-300 PSI.

**Outlet Pressure Range:** 1-30 PSI.

**Inlet:** 3/8" NPT female inlet.

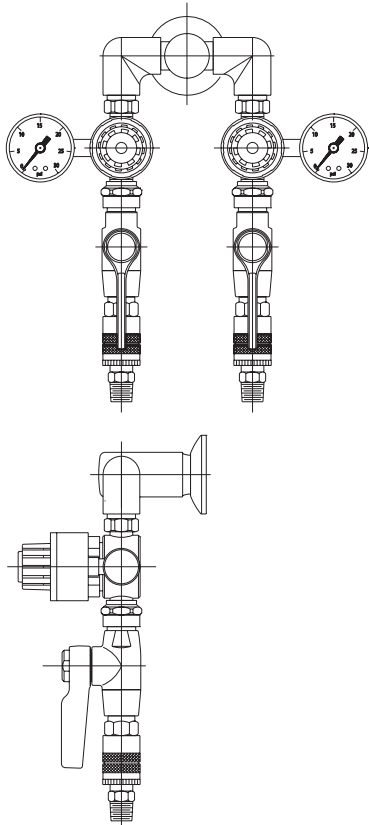
**Outlet:** Removable quick connect fitting with 1/4" NPT male plug.

**Cleaning:** Fixture is specially cleaned, lubricated, assembled and packaged for use with high purity gases, including oxygen.

**Quality Assurance:** Fixture is fully assembled and factory tested prior to shipment.

### L4203-364EL-179FT

Pressure Regulator Fixture, Low Pressure / Carbon Dioxide, Wall Mounted Double



**Application:** Low pressure point-of-use regulation of carbon dioxide and high purity gases. Used for supplying CO2 to incubators, low pressure compressed air applications and low pressure inert high purity gases, including nitrogen, helium, argon and oxygen.

**Mounting:** Fixture is designed for vertical mounting on wall. Inlet flange has female inlet and floating escutcheon. Flange can be threaded onto nipple stubbed out of wall. Threaded escutcheon is then backed up to panel to secure fixture and conceal pipe. Alternatively, fixture can be secured to panel with 3/8" IPS heavy duty mounting shank, locknut and washer.

**Regulator:** Non-relieving type with brass body and neoprene diaphragm.

**Valves:** Ball valve for on / off control of flow. Valve has forged brass body, chrome plated brass ball and molded PTFE seals.

**Inlet Pressure Range:** 5-300 PSI.

**Outlet Pressure Range:** 1-30 PSI.

**Inlet:** 3/8" NPT female inlet.

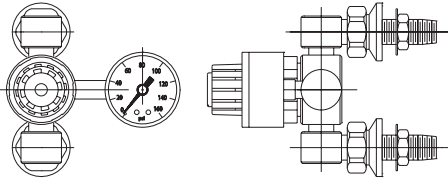
**Outlet:** Removable quick connect fitting with 1/4" NPT male plug.

**Cleaning:** Fixture is specially cleaned, lubricated, assembled and packaged for use with high purity gases, including oxygen.

**Quality Assurance:** Fixture is fully assembled and factory tested prior to shipment.

## L774VR

Pressure Regulator Fixture, Fume Hood Mounted



**Application:** Point-of-use regulation of high purity gases for installation on fume hoods. Used for compressed air and inert high purity gases, including nitrogen, helium, argon and oxygen.

**Mounting:** Pressure regulator / gauge assembly is surface mounted on front face of fume hood. Regulator assembly, valve and outlet fitting are piped together behind face of hood (pipe and fittings are not supplied). Gauge is installed on right side of regulator.

**Regulator:** Non-relieving type with brass body and neoprene diaphragm. Regulator assembly is furnished with 1/4" IPS mounting shanks, locknuts and washers.

**Inlet Pressure Range:** 5-300 PSI.

**Outlet Pressure Range:** 5-125 PSI.

**Cleaning:** Fixture is specially cleaned, lubricated, assembled and packaged for use with high purity gases, including oxygen.

**Quality Assurance:** Regulator assembly, valve and outlet are fully assembled and factory tested prior to shipment.

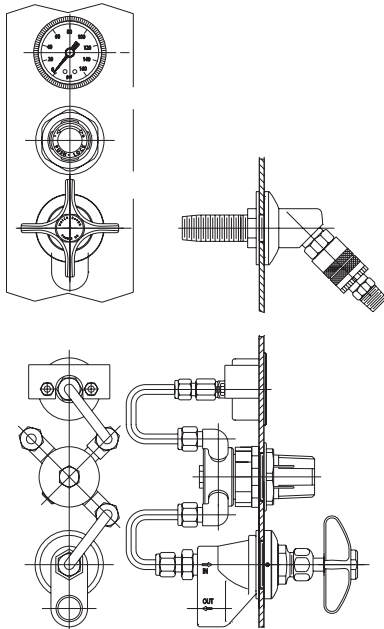
### Additional Model

**L774VL** Same as above except with gauge on left side.

**Note:** This pressure regulator fixture may be used with any WaterSaver remote control fine control needle valve and outlet fitting. Refer to pages 44-49 for information. Valve and outlet fitting must be ordered separately.

## L740FCN-784-QR

Pressure Regulator Fixture, Fume Hood Mounted



**Application:** Point-of-use regulation of high purity gases for installation on fume hoods. Used for compressed air and inert high purity gases, including nitrogen, helium, argon and oxygen.

**Mounting:** Pressure regulator, gauge and valve are recess mounted on front face of fume hood. Regulator, gauge and valve are furnished complete with all tube and fittings required to install in hood.

**Regulator:** Panel mounted non-relieving type with brass body and neoprene diaphragm.

**Valve:** Panel mounted fine control needle valve for precise flow control. Valve has forged brass body, floating tapered stainless steel needle and replaceable stainless steel seat.

**Outlet Fitting:** Outlet fitting for installation inside hood has removable quick connect with 1/4" NPT male plug.

**Inlet Pressure Range:** 5-300 PSI.

**Outlet Pressure Range:** 5-125 PSI.

**Cleaning:** Fixture is specially cleaned, lubricated, assembled and packaged for use with high purity gases, including oxygen.

**Quality Assurance:** Pressure regulator, gauge, valve and outlet fitting are fully assembled and factory tested prior to shipment.

### Additional Model

**L740FCN-784-MR** Same as above except with 1/4" OD compression fitting outlet inside fume hood.

**Note:** This pressure regulator assembly may be used with any WaterSaver remote control fine control needle valve (ex: L739FCN, L751FCN, etc.) and outlet fitting. Refer to pages 44-49 for information. Insert model number of desired valve and outlet fitting in fixture number shown above.