



Item # \_\_\_\_\_

Job \_\_\_\_\_

## SUPER ERECTA SHELF® POST-TYPE AND DIRECT WALL MOUNTS

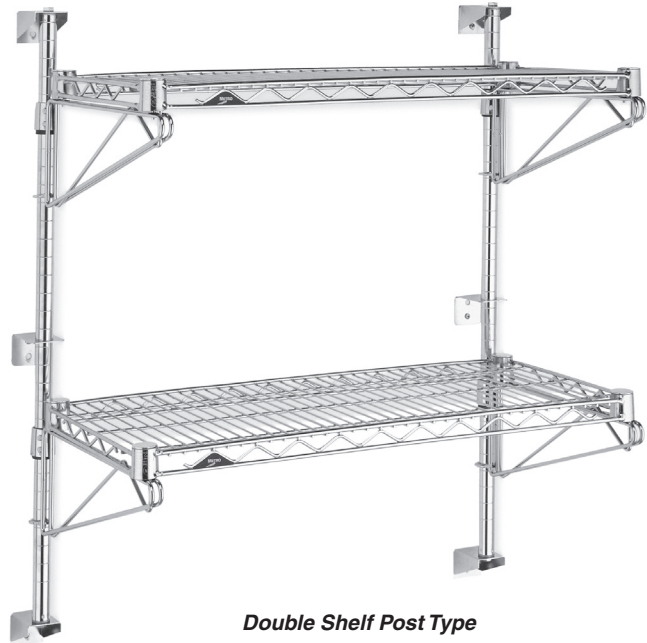
- **Ideal for Storing** items conveniently overhead or above work surfaces.
- **Versatile:** Can accommodate Super Erecta wire and solid shelves, Super Erecta Pro, MetroMax Q, and MetroMax i shelves.  
**Note:** For MetroMax i shelves, order (1) M9997-4 adapter kit per shelf.
- **Single and Double Supports:** Double support used for mounting adjacent shelves; single supports at the ends of the shelving tier. Available in nickel chrome, Metroseal 3 or Type 304 stainless steel.

### Post-Type Mounts

- **Versatile:** Metro's post-type mounting system can meet your exact needs for wall shelving. Posts and supports are available to hold anything from a single small shelf to many tiers of shelving running continuously along a wall.
- **Fast, Secure Assembly:** Post has rolled, circular grooves along its entire height at 1" (25mm) intervals. Tapered, plastic split-sleeve locks around any groove, and matching taper in opening on shelf support provides secure positioning.
- **Adjustable:** Shelf supports and shelves can be positioned or repositioned on the post in 1" (25mm) increments.
- **For Easy Ordering:** "End Unit" and "Mid Unit" models are available to meet a wide range of wall-shelving requirements. Just add shelves.

### Direct Mounts

- **Convenient, single storage level.**
- **Two-Piece:** Support is held by mounting plate, which attaches directly to the wall.
- **Conserve Space:** Back of shelf is within a fraction of an inch from the wall.



Double Shelf Post Type



Direct Mount



Single



Double



888.635.2080 | newenglandlab.com



Super Erecta Shelf® Post-Type & Direct Wall Mounts

10.40



# SUPER ERECTA SHELF® POST-TYPE AND DIRECT WALL MOUNTS

## Post Type Wall Mounts — Preconfigured Models. Just add shelves.

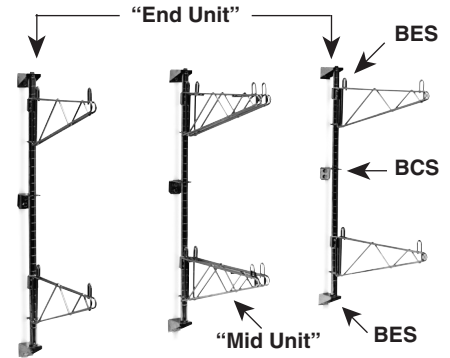
Post-type wall mounts are available in preconfigured "End Units" and "Mid Units," complete with all needed components except wall bolts or screws, which must be selected according to type of wall.\* Components are chrome-plated.

"End Unit" consists of two posts with brackets, and two single supports for each shelf.

"Mid Unit" consists of one post with brackets and a double support for each tier.

### Guide

Single unit	(1) End Unit	—
Two units connected end-to-end	(1) End Unit	(1) Mid Unit
Three units connected end-to-end	(1) End Unit	(2) Mid Units
Four units connected end-to-end	(1) End Unit	(3) Mid Units
Five units connected end-to-end	(1) End Unit	(4) Mid Units



Number of Tiers	Post Number	Model No. 14" (460mm) Shelf Width		Model No. 18" (457mm) Shelf Width		Model No. 21" (533mm) Shelf Width		Model No. 24" (610mm) Shelf Width	
		End Unit	Mid Unit	End Unit	Mid Unit	End Unit	Mid Unit	End Unit	Mid Unit
1 Shelf	13PDF	SW21C	AW21C	SW31C	AW31C	SW41C	AW41C	SW51C	AW51C
2 Shelf	33PDF	SW23C	AW23C	SW33C	AW33C	SW43C	AW43C	SW53C	AW53C
3 Shelf	54PDF	SW25C	AW25C	SW35C	AW35C	SW45C	AW45C	SW55C	AW55C
4 Shelf	63PDF	SW26C	AW26C	SW36C	AW36C	SW46C	AW46C	SW56C	AW56C

Order shelves from sheets #10.01, 10.20, 10.80, 9.20, 9.21. For MetroMax i shelves, order one M9997-4 adapter kit per shelf.

## Posts & Brackets

Post Height (in.)	Post Height (mm)	Description	Model No. Plated	Model No. Metroseal 3	Model No. Stainless	Approx. Pkd. Wt. (lbs.) (kg)	
13 <sup>7</sup> / <sub>8</sub>	350	Post for 1 tier	13PDF	13PDFK3	13PDFS	1.25	0.6
33 <sup>5</sup> / <sub>8</sub>	854	Post for 2 tiers	33PDF	33PDFK3	33PDFS	2.75	1.2
54	1370	Post for 3 or more tiers	54PDF	54PDFK3	54PDFS	5.0	2.3
62	1573	Post for 4 or more tiers	63PDF	63PDFK3	63PDFS	6.0	2.7
		End Bracket	BES	BESK3	SBES	0.5	0.2
		Intermediate Bracket	BCS	BCSK3	SBCS	0.5	0.2

## To Order By Components

**Posts & Brackets** — Two end brackets (BES), are supplied with each of these double-footed posts. One intermediate bracket (BCS) is supplied with 33PDF posts and two are supplied with 54PDF and 63PDF posts.

Posts and brackets can be used to mount 12" (305mm) cantilever shelves (sheet #10.06) rather than shelf supports.

BCS brackets can also be used to attach freestanding shelving to wall.

## Shelf Supports — Post Mounting

Shelf Width (in.)	Shelf Width (mm)	SINGLE			DOUBLE		
		Model No. Chrome	Model No. Metroseal 3	Model No. Stainless	Model No. Chrome	Model No. Metroseal 3	Model No. Stainless
14	360	1WS14C	1WS14K3	1WS14S	2WS14C	2WS14K3	2WS14S
18	457	1WS18C	1WS18K3	1WS18S	2WS18C	2WS18K3	2WS18S
21	533	1WS21C	—	1WS21S	2WS21C	—	2WS21S
24	610	1WS24C	1WS24K3	1WS24S	2WS24C	2WS24K3	2WS24S

Order shelves from sheets #10.01, 10.20, 10.80, 9.20, 9.21. For MetroMax i shelves, order one M9997-4 adapter kit per shelf.  
**Load Rating:** 250 lbs. (113kg) per system.

**Direct Wall Mounts** — Each consists of one shelf support and mounting plate, with two caps. Use single support at shelf ends; double support for adjoining shelves. Select wall bolts or screws according to type of wall.\*

\*User should determine that wall material and method of mounting are suitable to support the shelves and their contents.

## Direct Wall Mounts

Shelf Width (in.)	Shelf Width (mm)	SINGLE			DOUBLE		
		Model No. Chrome	Model No. Metroseal 3	Model No. Stainless	Model No. Chrome	Model No. Metroseal 3	Model No. Stainless
14	360	1WD14C	1WD14K3	1WD14S	2WD14C	2WD14K3	2WD14S
18	457	1WD18C	1WD18K3	1WD18S	2WD18C	2WD18K3	2WD18S
21	533	1WD21C	1WD21K3	1WD21S	2WD21C	2WD21K3	2WD21S
24	610	1WD24C	1WD24K3	1WD24S	2WD24C	2WD24K3	2WD24S

**Load Rating:** 200 lbs. (91kg) per system.

All Metro Catalog Sheets are available on our Web Site: [www.metro.com](http://www.metro.com)



888.635.2080 | [newenglandlab.com](http://newenglandlab.com)

L02-021  
Printed in U.S.A. Rev. 4/11

Information and specifications are subject to change without notice. Please confirm at time of order.

Copyright © 2011 InterMetro Industries Corp.

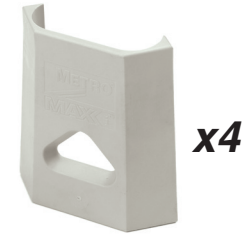
# MetroMax<sup>®</sup> i POLYMER SHELVING



We put space to work.<sup>®</sup>

## Material Specifications:

- **Longitudinal Beams and Posts:** Pultrusions — continuous glass fibers and thermoset resin composite with built-in Microban<sup>®</sup> antimicrobial product protection.
- **End Beams, Adjustable Foot and Socket, Shelf Wedge Connector:** reinforced nylon.
- **Shelf Mats:** Polypropylene with built-in Microban antimicrobial product protection.
- **Post Cap and Center Beam Cap:** High-density polyethylene.
- **“S” Hook Tab Hole Plug:** Vinyl.
- **Collar and “S” Hook:** Type 304 Stainless Steel.
- **Bonding of Longitudinal Beams to End Beams:** High temperature polyamide adhesive and stainless steel screws.
- **Continuous Temperature** — MetroMax i<sup>®</sup> can be used continuously within a range of -20/120° F (-29/49° C) with intermittent exposure to 212° F (100° C) for cleaning. Visit metro.com/service-support for cleaning guidelines.



**Replacement MetroMax i Wedges**  
Cat. No. MX9985  
Bag of 4 wedges  
(included with each shelf)

## Standard Shelves

- Part number includes shelf with removable mats and one bag of wedges.

Shelf with Grid Mats Model No.	Approx. Pkd. Wt.		Shelf with Solid Mat Model No.	Approx. Pkd. Wt.		Nominal Size			Actual Size				
	(lbs.)	(kg)		(lbs.)	(kg)	Width (in.)	Width (mm)	Length (in.)	Length (mm)	Width (in.)	Width (mm)	Length (in.)	Length (mm)
MX1824G	8.7	4.0	MX1824F	12.7	5.8	18	457	24	610	18 <sup>1</sup> / <sub>4</sub>	464	23 <sup>11</sup> / <sub>16</sub>	602
MX1830G	10.5	4.7	MX1830F	14.5	6.6	18	457	30	762	18 <sup>1</sup> / <sub>4</sub>	464	29 <sup>1</sup> / <sub>16</sub>	754
MX1836G	12.2	5.5	MX1836F	17.2	7.8	18	457	36	914	18 <sup>1</sup> / <sub>4</sub>	464	35 <sup>1</sup> / <sub>16</sub>	907
MX1842G	13.9	6.3	MX1842F	20.1	9.1	18	457	42	1067	18 <sup>1</sup> / <sub>4</sub>	464	41 <sup>1</sup> / <sub>16</sub>	1059
MX1848G	15.7	7.1	MX1848F	23.1	10.5	18	457	48	1219	18 <sup>1</sup> / <sub>4</sub>	464	47 <sup>1</sup> / <sub>16</sub>	1211
MX1854G	17.5	7.9	MX1854F	21.5	9.7	18	457	54	1372	18 <sup>1</sup> / <sub>4</sub>	464	53 <sup>1</sup> / <sub>16</sub>	1364
MX1860G	19.2	8.7	MX1860F	23.2	10.5	18	457	60	1524	18 <sup>1</sup> / <sub>4</sub>	464	59 <sup>1</sup> / <sub>16</sub>	1516
MX1872G	22.5	10.2	MX1872F	27.5	12.5	18	457	72	1829	18 <sup>1</sup> / <sub>4</sub>	464	71 <sup>1</sup> / <sub>16</sub>	1821
MX2424G	12.2	5.5	MX2424F	14.2	6.4	24	610	24	610	24 <sup>1</sup> / <sub>4</sub>	616	23 <sup>1</sup> / <sub>16</sub>	602
MX2430G	13.9	6.3	MX2430F	15.9	7.2	24	610	30	762	24 <sup>1</sup> / <sub>4</sub>	616	29 <sup>1</sup> / <sub>16</sub>	754
MX2436G	15.6	7.1	MX2436F	19.6	8.9	24	610	36	914	24 <sup>1</sup> / <sub>4</sub>	616	35 <sup>1</sup> / <sub>16</sub>	907
MX2442G	17.5	7.9	MX2442F	21.5	9.8	24	610	42	1067	24 <sup>1</sup> / <sub>4</sub>	616	41 <sup>1</sup> / <sub>16</sub>	1059
MX2448G	19.3	8.7	MX2448F	25.3	11.5	24	610	48	1219	24 <sup>1</sup> / <sub>4</sub>	616	47 <sup>1</sup> / <sub>16</sub>	1211
MX2454G	21.0	9.5	MX2454F	25.0	11.3	24	610	54	1372	24 <sup>1</sup> / <sub>4</sub>	616	53 <sup>1</sup> / <sub>16</sub>	1364
MX2460G	22.8	10.3	MX2460F	26.8	12.1	24	610	60	1524	24 <sup>1</sup> / <sub>4</sub>	616	59 <sup>1</sup> / <sub>16</sub>	1516
MX2472G	26.0	11.8	MX2472F	31.0	14.1	24	610	72	1829	24 <sup>1</sup> / <sub>4</sub>	616	71 <sup>1</sup> / <sub>16</sub>	1821

## Heavy-Duty Dunnage Shelves

- Weight capacity per shelf evenly distributed: 1,200 lbs. (544kg) on shelves up to and including 48" (1220mm) long; 900 lbs. (408kg) for shelves 60" (1524mm) long.
- Dunnage shelves are recommended for use on units with four posts, not as part of an add-on unit with two posts.

Shelf with Grid Mat Model No.	Nominal Size		Approx. Pkd. Wt. (lbs.) (kg)
	Width (in.) (mm)	Length (in.) (mm)	
MHP2436G	24	610	36 914 21 9.5
MHP2448G	24	610	48 1220 27 12.2
MHP2460G	24	610	60 1524 33 15.0

## Stationary Posts

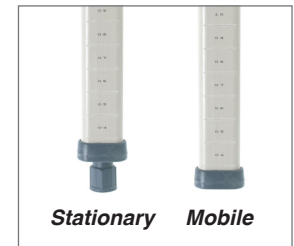
Model No.	Nominal Height		Actual Height*		Approx. Pkd. Wt.	
	(in.)	(mm)	(in.)	(mm)	(lbs.)	(kg)
MX13P	13	370	14 <sup>3</sup> / <sub>16</sub>	360	0.5	0.2
MX27P	27	685	28 <sup>3</sup> / <sub>16</sub>	716	0.9	0.4
MX33P	33	875	34 <sup>3</sup> / <sub>16</sub>	868	1.0	0.5
MX54P	54	1370	54 <sup>3</sup> / <sub>16</sub>	1376	1.6	0.7
MX63P	63	1585	62 <sup>3</sup> / <sub>16</sub>	1580	1.8	0.8
MX74P	74	1890	74 <sup>3</sup> / <sub>16</sub>	1884	2.2	1.0
MX86P	86	2195	86 <sup>3</sup> / <sub>16</sub>	2189	3.0	1.4

\*Actual Height with leveling foot completely tightened. Leveling foot can be adjusted up to 1" (25mm) to compensate for uneven floors.

## Mobile Posts — for use with stem casters

Model No.	Nominal Height		Actual Height		Approx. Pkd. Wt.	
	(in.)	(mm)	(in.)	(mm)	(lbs.)	(kg)
MX9UP	9	228	9 <sup>3</sup> / <sub>16</sub>	233	0.3	0.15
MX13UP	13	370	13 <sup>3</sup> / <sub>16</sub>	335	0.5	0.2
MX27UP	27	685	27 <sup>3</sup> / <sub>16</sub>	691	0.9	0.4
MX33UP	33	875	33 <sup>3</sup> / <sub>16</sub>	843	1.0	0.5
MX54UP	54	1370	53 <sup>3</sup> / <sub>16</sub>	1351	1.6	0.7
MX63UP	63	1585	61 <sup>3</sup> / <sub>16</sub>	1554	1.8	0.8
MX74UP	74	1890	73 <sup>3</sup> / <sub>16</sub>	1859	2.2	1.0
MX86UP	86	2195	85 <sup>3</sup> / <sub>16</sub>	2164	3.0	1.4

Consult spec sheet 9.25 for stem casters.



Note: For special height cut posts, consult your Metro representative.

MICROBAN<sup>®</sup> and the MICROBAN<sup>®</sup> symbol are registered trademarks of the Microban<sup>®</sup> Products Company, Huntersville, NC. Microban<sup>®</sup> product protection does not by itself protect a user from food borne illness. Product must be routinely cleaned.

an Ali Group Company



The Spirit of Excellence



888.635.2080 | newenglandlab.com





# MetroMax Q<sup>®</sup> POLYMER / WIRE SHELVING

We put space to work.™

## Standard Interchangeable Shelves

Part number includes shelf with removable mats and one bag of wedges

Shelf with Grid Mat Model No.	Nominal Size		Actual Size		Approx. Pkd. Wt.					
	Width (in.)	Length (mm)	Width (mm)	Length (mm)	(lbs.)	(kg)				
MQ1824G	18	457	24	610	18 <sup>3</sup> / <sub>16</sub>	467	23 <sup>13</sup> / <sub>16</sub>	605	6.2	2.8
MQ1830G	18	457	30	762	18 <sup>3</sup> / <sub>16</sub>	467	29 <sup>13</sup> / <sub>16</sub>	757	8.0	3.6
MQ1836G	18	457	36	914	18 <sup>3</sup> / <sub>16</sub>	467	35 <sup>13</sup> / <sub>16</sub>	910	9.7	4.4
MQ1842G	18	457	42	1067	18 <sup>3</sup> / <sub>16</sub>	467	41 <sup>13</sup> / <sub>16</sub>	1062	11.4	5.2
MQ1848G	18	457	48	1219	18 <sup>3</sup> / <sub>16</sub>	467	47 <sup>13</sup> / <sub>16</sub>	1215	13.2	6.0
MQ1854G	18	457	54	1372	18 <sup>3</sup> / <sub>16</sub>	467	53 <sup>13</sup> / <sub>16</sub>	1367	15.0	6.8
MQ1860G	18	457	60	1524	18 <sup>3</sup> / <sub>16</sub>	467	59 <sup>13</sup> / <sub>16</sub>	1519	16.7	7.6
MQ1872G	18	457	72	1829	18 <sup>3</sup> / <sub>16</sub>	467	71 <sup>13</sup> / <sub>16</sub>	1824	20.0	9.1
MQ2124G	21	530	24	610	21 <sup>3</sup> / <sub>16</sub>	543	23 <sup>13</sup> / <sub>16</sub>	605	8.0	3.6
MQ2130G	21	530	30	762	21 <sup>3</sup> / <sub>16</sub>	543	29 <sup>13</sup> / <sub>16</sub>	757	9.7	4.4
MQ2136G	21	530	36	914	21 <sup>3</sup> / <sub>16</sub>	543	35 <sup>13</sup> / <sub>16</sub>	910	11.4	5.2
MQ2142G	21	530	42	1067	21 <sup>3</sup> / <sub>16</sub>	543	41 <sup>13</sup> / <sub>16</sub>	1062	12.8	5.8
MQ2148G	21	530	48	1219	21 <sup>3</sup> / <sub>16</sub>	543	47 <sup>13</sup> / <sub>16</sub>	1215	14.5	6.6
MQ2154G	21	530	54	1372	21 <sup>3</sup> / <sub>16</sub>	543	53 <sup>13</sup> / <sub>16</sub>	1367	16.7	7.6
MQ2160G	21	530	60	1524	21 <sup>3</sup> / <sub>16</sub>	543	59 <sup>13</sup> / <sub>16</sub>	1519	18.5	8.4
MQ2172G	21	530	72	1829	21 <sup>3</sup> / <sub>16</sub>	543	71 <sup>13</sup> / <sub>16</sub>	1824	21.7	9.9
MQ2424G	24	610	24	610	24 <sup>3</sup> / <sub>16</sub>	619	23 <sup>13</sup> / <sub>16</sub>	605	9.7	4.4
MQ2430G	24	610	30	762	24 <sup>3</sup> / <sub>16</sub>	619	29 <sup>13</sup> / <sub>16</sub>	757	11.4	5.2
MQ2436G	24	610	36	914	24 <sup>3</sup> / <sub>16</sub>	619	35 <sup>13</sup> / <sub>16</sub>	910	13.1	6.0
MQ2442G	24	610	42	1067	24 <sup>3</sup> / <sub>16</sub>	619	41 <sup>13</sup> / <sub>16</sub>	1062	14.1	6.4
MQ2448G	24	610	48	1219	24 <sup>3</sup> / <sub>16</sub>	619	47 <sup>13</sup> / <sub>16</sub>	1215	15.8	7.1
MQ2454G	24	610	54	1372	24 <sup>3</sup> / <sub>16</sub>	619	53 <sup>13</sup> / <sub>16</sub>	1367	18.5	8.4
MQ2460G	24	610	60	1524	24 <sup>3</sup> / <sub>16</sub>	619	59 <sup>13</sup> / <sub>16</sub>	1519	20.3	9.2
MQ2472G	24	610	72	1829	24 <sup>3</sup> / <sub>16</sub>	619	71 <sup>13</sup> / <sub>16</sub>	1824	23.5	10.7

## Heavy-Duty Dunnage Shelves

- Weight capacity per shelf evenly distributed: 1,200 lbs. (544kg) on shelves up to and including 48" (1219mm) long; 900 lbs. (408kg) for shelves 54" (1370mm) and longer.
- Dunnage shelves are recommended for use on units with four posts, not on an add-on unit with two posts.

Grid Mat Model No.	Nominal		Approx. Pkd. Wt.			
	Width (in.)	Length (mm)	(lbs.)	(kg)		
MHP2436G	24	610	36	914	21	9.5
MHP2448G	24	610	48	1220	27	12.2
MHP2454G	24	610	54	1370	29	13.2
MHP2460G	24	610	60	1524	33	15.0

## Material Specifications:

- **Shelf Mats:** Injection-molded polypropylene with exclusive built-in Microban<sup>®</sup> antimicrobial product protection.
- **Shelf frames:** Steel with electroplated substrate and highly durable, abrasion-resistant epoxy finish.
- **Epoxy-coated posts:** Steel with electroplated substrate and highly durable, abrasion-resistant epoxy finish. Epoxy finish has built-in Microban antimicrobial product protection. The adjustable foot is reinforced nylon.
- **Temperature range:** -20°F (-29°C) to 125°F (52°C) continuous use, with intermittent exposure to 200°F (93°C) for cleaning. Visit [metro.com/service-support](http://metro.com/service-support) for cleaning guidelines.

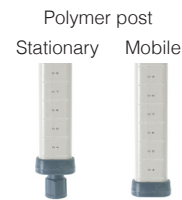
## Rust Proof Polymer Posts - Lifetime warranty against rust.

### Stationary - with leveling foot

Epoxy-Coated Steel Model No.	Approx. Pkd. Wt. (lbs.)	Approx. Pkd. Wt. (kg)	Nominal Height (in.)	Nominal Height (mm)	Actual Height (in.)	Actual Height (mm)
MX13P	0.5	0.2	13	370	14 <sup>3</sup> / <sub>16</sub>	360
MX27P	0.9	0.4	27	685	28 <sup>3</sup> / <sub>16</sub>	716
MX33P	1.0	0.5	33	875	34 <sup>3</sup> / <sub>16</sub>	868
MX54P	1.6	0.7	54	1370	54 <sup>3</sup> / <sub>16</sub>	1376
MX63P	1.8	0.8	63	1585	62 <sup>3</sup> / <sub>16</sub>	1580
MX74P	2.3	1.0	74	1690	74 <sup>3</sup> / <sub>16</sub>	1884
MX86P	2.5	1.4	86	2195	86 <sup>3</sup> / <sub>16</sub>	2189

### Mobile - for stem casters

Polymer Model No.	Approx. Pkd. Wt. (lbs.)	Approx. Pkd. Wt. (kg)	Nominal Height (in.)	Nominal Height (mm)	Actual Height (in.)	Actual Height (mm)
MX13UP	0.5	0.2	13	370	14 <sup>3</sup> / <sub>16</sub>	360
MX27PE	2.0	0.9	27	685	28 <sup>3</sup> / <sub>16</sub>	716
MX33UP	1.0	0.5	33	875	34 <sup>3</sup> / <sub>16</sub>	868
MX54UP	1.6	0.7	54	1370	54 <sup>3</sup> / <sub>16</sub>	1376
MX63UP	1.8	0.8	63	1585	62 <sup>3</sup> / <sub>16</sub>	1580
MX70UP	2.0	0.9	70	1778	69 <sup>3</sup> / <sub>16</sub>	1757
MX74UP	2.3	1.0	74	1690	74 <sup>3</sup> / <sub>16</sub>	1884
MX86UP	3.0	1.4	86	2195	86 <sup>3</sup> / <sub>16</sub>	2189



**Shelf Wedge Connector:**  
Reinforced nylon. Replacement MetroMax Q Wedges Cat. No. MQ9985 (Bag of 4)

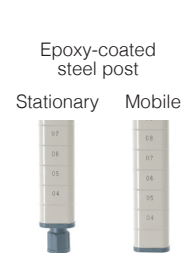
## Epoxy Coated Steel Posts - For heavy-duty mobile applications. 15 year limited rust warranty.

### Stationary - with leveling foot

Polymer Model No.	Approx. Pkd. Wt. (lbs.)	Approx. Pkd. Wt. (kg)	Nominal Height (in.)	Nominal Height (mm)	Actual Height (in.)	Actual Height (mm)
MQ13PE	1.0	0.5	13	370	14 <sup>3</sup> / <sub>16</sub>	360
MQ27PE	2.0	0.9	27	685	28 <sup>3</sup> / <sub>16</sub>	716
MQ33PE	2.5	1.1	33	875	34 <sup>3</sup> / <sub>16</sub>	868
MQ54PE	4.0	1.8	54	1370	54 <sup>3</sup> / <sub>16</sub>	1376
MQ63PE	4.5	2.0	63	1585	62 <sup>3</sup> / <sub>16</sub>	1580
MQ74PE	5.5	2.5	74	1690	74 <sup>3</sup> / <sub>16</sub>	1884
MQ86PE	6.5	2.9	86	2195	86 <sup>3</sup> / <sub>16</sub>	2189

### Mobile - for stem casters

Epoxy-Coated Steel Model No.	Approx. Pkd. Wt. (lbs.)	Approx. Pkd. Wt. (kg)	Nominal Height (in.)	Nominal Height (mm)	Actual Height (in.)	Actual Height (mm)
MQ13UPE	1.0	0.5	13	370	14 <sup>3</sup> / <sub>16</sub>	360
MQ27UPE	2.0	0.9	27	685	28 <sup>3</sup> / <sub>16</sub>	716
MQ33UPE	2.5	1.1	33	875	34 <sup>3</sup> / <sub>16</sub>	868
MQ54UPE	4.0	1.8	54	1370	54 <sup>3</sup> / <sub>16</sub>	1376
MQ63UPE	4.5	2.0	63	1585	62 <sup>3</sup> / <sub>16</sub>	1580
MQ70UPE	2.0	0.9	70	1778	69 <sup>3</sup> / <sub>16</sub>	1757
MQ74UPE	5.5	2.5	74	1690	74 <sup>3</sup> / <sub>16</sub>	1884
MQ86UPE	6.5	2.9	86	2195	86 <sup>3</sup> / <sub>16</sub>	2189



an Ali Group Company



The Spirit of Excellence



888.635.2080 | [newenglandlab.com](http://newenglandlab.com)





## SUPER ERECTA SHELF® WIRE SHELVING

### Super Wide Shelving

- **High-density Storage:** Super Wide™ shelves have a greater storage area for holding large quantities of supplies, especially large, bulky objects, providing maximum storage in minimum space.
- **Load Capacity** (evenly distributed) per shelf:  
Depths: 30" and 36" (760 and 914mm)  
600 lbs. (272kg) for lengths 48" (1219mm) or shorter.  
400 lbs. (181kg) for lengths 54" (1370mm) or longer.



Model No. Chrome	Model No. Metroseal 3 with Microban	Model No. Stainless Steel	Nominal Width/Length		Approx. Pkd. Wt.	
			(in.)	(mm)	(lbs.)	(kg)
3036NC	3036NK3	3036NS	30x36	760x914	15	6.8
3048NC	3048NK3	3048NS	30x48	760x1219	21	9.5
3060NC	3060NK3	3060NS	30x60	760x1524	26 <sup>1</sup> / <sub>2</sub>	11.8
3072NC	3072NK3	3072NS	30x72	760x1829	31	14.0
3636NC	3636NK3	3636NS	36x36	910x914	18	8.2
3648NC	3648NK3	3648NS	36x48	910x1219	23	10.4
3660NC	3660NK3	3660NS	36x60	910x1524	29	13.1
3672NC	3672NK3	3672NS	36x72	910x1829	34 <sup>1</sup> / <sub>2</sub>	15.4

### Foot Plates

- Use to bolt units to the floor, or when a broader, more stable foot is desired. Foot plates also help to protect floors by distributing the point load of the shelving unit across a larger contact point.
- Foot plates (completely tightened) add 1/8" (3mm) to the specified heights of each stationary post on the table.  
Zinc Cat. No. 9993Z  
Stainless Steel Cat. No. 9993S



### "S" Hook

- Used to add on shelving units with only two posts required. Order two per shelf level.  
Cat. No. 9995Z



All Metro Catalog Sheets are available on our Web Site: [www.metro.com](http://www.metro.com)



L02-006  
Printed in U.S.A. Rev. 11/08

Information and specifications are subject to change without notice. Please confirm at time of order.

Copyright © 2008 InterMetro Industries Corp.



# SUPER ERECTA SHELF® SOLID SHELVING (18-Gauge)

We put space to work.®

Galvanized shelves have uncoated, cast aluminum corners. Standard Type 304 Stainless Steel shelves have black epoxy-coated corners. Autoclavable/cart washable Type 304 Stainless Steel shelves have stainless corners.

Nominal Width/Length (in.) (mm)	Approx. Pkd. Wt. (lbs.) (kg)	GALVANIZED		STAINLESS STEEL		Autoclavable Cart Washable Stainless Steel Flat Stainless
		Flat Galvanized	Louvered/ Embossed Galvanized	Flat Stainless	Louvered/ Embossed Stainless	
14x24 355x610	10 4.5	1424FG	1424LG	1424FS	1424LS	1424NFS
14x30 355x760	12 5.4	1430FG	1430LG	1430FS	1430LS	1430NFS
14x36 355x914	14 6.4	1436FG	1436LG	1436FS	1436LS	1436NFS
14x42 355x1066	15 6.8	1442FG	1442LG	1442FS	1442LS	1442NFS
14x48 355x1219	17 7.7	1448FG	1448LG	1448FS	1448LS	1448NFS
14x60 355x1524	22 9.9	1460FG	1460LG	1460FS	1460LS	1460NFS
18x24 457x610	11 5.0	1824FG	1824LG	1824FS	1824LS	1824NFS
18x30 457x760	14 6.4	1830FG	1830LG	1830FS	1830LS	1830NFS
18x36 457x914	16 7.3	1836FG	1836LG	1836FS	1836LS	1836NFS
18x42 457x1066	18 8.2	1842FG	1842LG	1842FS	1842LS	1842NFS
18x48 457x1219	20 9.1	1848FG	1848LG	1848FS	1848LS	1848NFS
18x60 457x1524	24 10.9	1860FG	1860LG	1860FS	1860LS	1860NFS
18x72 457x1829	29 13.2	1872FG	—	1872FS	—	*
21x24 530x610	13 5.9	2124FG	2124LG	2124FS	2124LS	2124NFS
21x30 530x760	15 6.8	2130FG	2130LG	2130FS	2130LS	2130NFS
21x36 530x914	18 8.2	2136FG	2136LG	2136FS	2136LS	2136NFS
21x42 530x1066	21 9.5	2142FG	2142LG	2142FS	2142LS	2142NFS
21x48 530x1219	23 10.4	2148FG	2148LG	2148FS	2148LS	2148NFS
21x60 530x1524	26 11.8	2160FG	2160LG	2160FS	2160LS	2160NFS
24x24 610x610	15 6.8	2424FG	2424LG	2424FS	2424LS	2424NFS
24x30 610x760	17 7.7	2430FG	2430LG	2430FS	2430LS	2430NFS
24x36 610x914	19 8.6	2436FG	2436LG	2436FS	2436LS	2436NFS
24x42 610x1066	21 9.5	2442FG	2442LG	2442FS	2442LS	2442NFS
24x48 610x1219	24 10.9	2448FG	2448LG	2448FS	2448LS	2448NFS
24x60 610x1524	29 14.0	2460FG	2460LG	2460FS	2460LS	2460NFS
24x72 610x1829	33 15.0	2472FG	—	2472FS	—	*

\*Contact your Metro representative for availability.



### SiteSelect Posts for Super Erecta® Solid Shelving

Stationary posts are fitted with adjustable leveling bolts to compensate for uneven surfaces. Mobile posts will accept stem casters (see Cat. Sheet 11.20). Height for stationary units includes leveling bolt and cap.

Actual Height* (in.) (mm)	STATIONARY*		MOBILE		Approx. Pkd. Wt. (lbs.) (kg)	
	Model No. Plated	Model No. Stainless	Model No. Plated	Model No. Stainless		
7 <sup>3</sup> / <sub>8</sub> 187	7P	—	6 <sup>3</sup> / <sub>4</sub> 171	7UP	—	1/2 0.3
14 <sup>3</sup> / <sub>8</sub> 365	13P	13PS	13 <sup>3</sup> / <sub>4</sub> 349	13UP	13UPS	1 0.5
28 <sup>3</sup> / <sub>8</sub> 720	27P	27PS	27 <sup>3</sup> / <sub>4</sub> 704	27UP	27UPS	1 <sup>3</sup> / <sub>4</sub> 0.75
34 <sup>3</sup> / <sub>8</sub> 873	33P	33PS	33 <sup>3</sup> / <sub>4</sub> 857	33UP	33UPS	2 0.9
54 <sup>7</sup> / <sub>16</sub> 1382	54P	54PS	53 <sup>13</sup> / <sub>16</sub> 1366	54UP	54UPS	3 1.4
62 <sup>7</sup> / <sub>16</sub> 1585	63P	63PS	61 <sup>13</sup> / <sub>16</sub> 1570	63UP	63UPS	3 <sup>1</sup> / <sub>2</sub> 1.6
—	—	—	69 <sup>3</sup> / <sub>4</sub> 1771	70UP	—	3 <sup>3</sup> / <sub>4</sub> 1.7
74 <sup>1</sup> / <sub>2</sub> 1892	74P	74PS	73 <sup>7</sup> / <sub>8</sub> 1876	74UP	74UPS	4 1.8
86 <sup>1</sup> / <sub>2</sub> 2197	86P	86PS	85 <sup>7</sup> / <sub>8</sub> 2181	86UP	86UPS	4 <sup>1</sup> / <sub>2</sub> 2.0
96 <sup>1</sup> / <sub>2</sub> 2450	96P	—	—	—	—	5 <sup>1</sup> / <sub>2</sub> 2.5

\*Actual height for the stationary post includes the post cap and the leveling bolt completely tightened.

### SiteSelect Posts for Autoclavable/ Cart-Washable Applications



Designed for use with stem casters and fitted with swaged aluminum post caps.

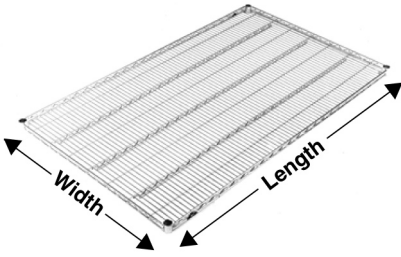
**9986S**

Actual Height (in.) (mm)	Approx. Pkd. Wt. (lbs.) (kg)	Model No. Stainless Steel
33 <sup>3</sup> / <sub>4</sub> 857	2 0.9	33UPS-SW
53 <sup>13</sup> / <sub>16</sub> 1366	3 1.4	54UPS-SW
61 <sup>13</sup> / <sub>16</sub> 1570	3 <sup>1</sup> / <sub>2</sub> 1.6	63UPS-SW

Order aluminum split sleeves with stainless "C" rings or corrosive, high-temperature autoclave or cart washing applications.  
Model No. **9986S**  
One bag required per shelf.



## Wire Shelves



Split Sleeve



Aluminum Split Sleeve

- **Metroseal 3:** Metro's proprietary epoxy coating contains Microban® antimicrobial product protection. Microban antimicrobial protects the epoxy coating from bacteria, mold, mildew, and fungus that cause odors, stains, and product degradation.
- See spec sheet 10.14 for epoxy color options.
- Plastic split sleeves are included with each shelf  
Replacements are available: Cat. No. 9985 (bag of 4)
- Aluminum split sleeves are recommended for abusive mobile applications and autoclave applications.  
Cat. No. 9986Z (bag of 4 with zinc C-rings)  
Cat. No. 9986S (bag of 4 with stainless steel C-rings)
- Load capacity (evenly distributed) per shelf  
Depths: 14" to 24" (355 to 610mm)  
800 lbs. (363kg) for lengths of 18" to 48" (457 to 1219mm)  
600 lbs. (272kg) for lengths of 54" (1370mm) or longer
- Load capacity (evenly distributed) per unit.  
Stationary shelving units have a maximum load capacity (evenly distributed) of 2,000 lbs. (907kg)  
Mobile units have a maximum capacity of three times the caster load rating up to but not exceeding 1,000 lbs. (453kg) total. Consult the Metro catalog for caster load ratings
- SUPER ERECTA SHELF meets Government Specifications MIL-S-40144E.

Model No. Super Erecta Brite	Model No. Chrome	Model No. Metroseal 3 with Microban®	Model No. Stainless	Nominal Width/Length (in.) (mm)	Approx. Pkd. Wt. (lbs.) (kg)
1424BR	1424NC	1424NK3	1424NS	14x24 355x610	6 2.7
1430 BR	1430NC	1430NK3	1430NS	14x30 355x760	7 3.2
1436BR	1436NC	1436NK3	1436NS	14x36 355x914	8 3.6
1442BR	1442NC	1442NK3	1442NS	14x42 355x1066	9 1/2 4.3
1448BR	1448NC	1448NK3	1448NS	14x48 355x1219	10 1/2 4.7
1460BR	1460NC	1460NK3	1460NS	14x60 355x1524	14 6.3
1472BR	1472NC	1472NK3	1472NS	14x72 355x1829	17 7.7
1824BR	1824NC	1824NK3	1824NS	18x24 457x610	7 3.2
1830BR	1830NC	1830NK3	1830NS	18x30 457x760	8 3.6
1836BR	1836NC	1836NK3	1836NS	18x36 457x914	9 1/2 4.3
1842BR	1842NC	1842NK3	1842NS	18x42 457x1066	11 5.0
1848BR	1848NC	1848NK3	1848NS	18x48 457x1219	12 5.4
1854BR	1854NC	1854NK3	1854NS	18x54 457x1370	14 1/2 6.6
1860BR	1860NC	1860NK3	1860NS	18x60 457x1524	17 7.7
1872BR	1872NC	1872NK3	1872NS	18x72 457x1829	20 9.1
2124BR	2124NC	2124NK3	2124NS	21x24 530x610	8 3.6
2130BR	2130NC	2130NK3	2130NS	21x30 530x760	9 4.1
2136BR	2136NC	2136NK3	2136NS	21x36 530x914	11 5.0
2142BR	2142NC	2142NK3	2142NS	21x42 530x1066	12 5.4
2148BR	2148NC	2148NK3	2148NS	21x48 530x1219	14 6.4
2154BR	2154NC	2154NK3	2154NS	21x54 530x1370	16 7.3
2160BR	2160NC	2160NK3	2160NS	21x60 530x1524	18 8.2
2172BR	2172NC	2172NK3	2172NS	21x72 530x1829	24 10.9
2424BR	2424NC	2424NK3	2424NS	24x24 610x610	9 4.1
2430BR	2430NC	2430NK3	2430NS	24x30 610x760	11 5.0
2436BR	2436NC	2436NK3	2436NS	24x36 610x914	13 5.9
2442BR	2442NC	2442NK3	2442NS	24x42 610x1066	15 6.8
2448BR	2448NC	2448NK3	2448NS	24x48 610x1219	16 7.3
2454BR	2454NC	2454NK3	2454NS	24x54 610x1370	19 8.6
2460BR	2460NC	2460NK3	2460NS	24x60 610x1524	21 9.5
2472BR	2472NC	2472NK3	2472NS	24x72 610x1829	26 11.8

**Note:** 14" (355mm) deep units.  
Free-standing units: Foot plates should be used and secured to the floor.  
Mobile units: maximum allowable post height is 54" (1370mm).

## SiteSelect™ Posts

### Stationary Posts

Stationary posts are equipped with a leveling bolt to account for uneven floors.

- Height includes leveling bolt (completely tightened) and post cap. Leveling bolt can be adjusted 1/2" (13mm).
- Foot plates may be ordered separately and installed in place of leveling foot.
- Replacement leveling bolts  
Zinc Cat. No. RPF04-004 Stainless Steel Cat. No. RPF04-004C
- Replacement post cap for standard posts  
Black Cat. No. RPC06-035



**SiteSelect Posts feature double grooves every 8" (203mm) to aid assembly.**

Model No. Chrome	Model No. Metroseal 3 with Microban	Model No. Stainless Steel	Height		Approx. Pkd. Wt.	
			(in.)	(mm)	(lbs.)	(kg)
7P			7 <sup>3</sup> / <sub>8</sub>	187	1/2	0.3
13P	13PK3	13PS	14 <sup>3</sup> / <sub>8</sub>	365	1	0.5
27P		27PS	28 <sup>3</sup> / <sub>8</sub>	720	1 <sup>3</sup> / <sub>4</sub>	0.75
33P	33PK3	33PS	34 <sup>3</sup> / <sub>8</sub>	873	2	0.9
54P	54PK3	54PS	54 <sup>7</sup> / <sub>16</sub>	1382	3	1.4
63P	63PK3	63PS	62 <sup>7</sup> / <sub>16</sub>	1585	3 <sup>1</sup> / <sub>2</sub>	1.6
74P	74PK3	74PS	74 <sup>1</sup> / <sub>2</sub>	1892	4	1.8
86P	86PK3	86PS	86 <sup>1</sup> / <sub>2</sub>	2197	5	2.3
*96P			96 <sup>1</sup> / <sub>2</sub>	2450	5 <sup>1</sup> / <sub>2</sub>	2.5

\*96P should not be used on units less than 24" (610mm) deep. Consult Metro Engineering for alternate recommendations.

### Mobile Posts (For use with Stem Casters)

- Height includes post cap.

Model No. Chrome	Model No. Metroseal 3 with Microban	Model No. Stainless Steel	Height		Approx. Pkd. Wt.	
			(in.)	(mm)	(lbs.)	(kg)
27UP		27UPS	27 <sup>3</sup> / <sub>4</sub>	704	1 <sup>3</sup> / <sub>4</sub>	0.75
33UP	33UPK3	33UPS	33 <sup>3</sup> / <sub>4</sub>	857	2	0.9
54UP	54UPK3	54UPS	53 <sup>13</sup> / <sub>16</sub>	1366	3	1.4
63UP	63UPK3	63UPS	61 <sup>13</sup> / <sub>16</sub>	1570	3 <sup>1</sup> / <sub>2</sub>	1.6
	70UPK3		69 <sup>3</sup> / <sub>4</sub>	1771	3 <sup>3</sup> / <sub>4</sub>	1.7
74UP	74UPK3	74UPS	73 <sup>7</sup> / <sub>8</sub>	1876	4	1.8
86UP	86UPK3	86UPS	85 <sup>7</sup> / <sub>8</sub>	2181	4 <sup>1</sup> / <sub>2</sub>	2.0

### Staked Posts (For use with Truck Dollies)

- Each post connects to the truck dolly through the stem receptacle. The stem receptacle is staked into the bottom of the post to ensure a durable connection in abusive mobile applications.
- Each includes a leveling/connecting bolt.

Model No. Chrome	Model No. Stainless Steel	Height		Approx. Pkd. Wt.	
		(in.)	(mm)	(lbs.)	(kg)
54P-STKD	54PS-STKD	54 <sup>7</sup> / <sub>16</sub>	1382	3	1.4
63P-STKD	63PS-STKD	62 <sup>7</sup> / <sub>16</sub>	1585	3 <sup>1</sup> / <sub>2</sub>	1.6
74P-STKD	74PS-STKD	74 <sup>1</sup> / <sub>2</sub>	1892	4	1.8

### Swedged Posts (For use with Stem Casters in Cart Wash Applications)

- Each post has an aluminum cap swedged into the top of the post.

Model No. Stainless Steel	Height		Approx. Pkd. Wt.	
	(in.)	(mm)	(lbs.)	(kg)
33UPS-SW	33 <sup>3</sup> / <sub>4</sub>	857	2	0.9
54UPS-SW	53 <sup>13</sup> / <sub>16</sub>	1366	3	1.4
63UPS-SW	61 <sup>13</sup> / <sub>16</sub>	1570	3 <sup>1</sup> / <sub>2</sub>	1.6

**Special Length Posts**  
Special length cut posts are available. Consult your Metro representative for more information.



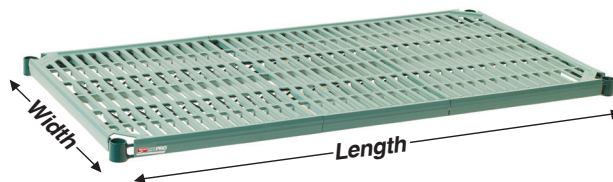


# Super Erecta Pro® Shelves

We put space to work.™

## Specifications

- **Shelf frames:** Carbon steel with Metroseal 3 epoxy coating.
  - **Polymer Shelf mats:** polypropylene.
  - **Microban antimicrobial product protection** is built into the polymer shelf mats and Metroseal 3 epoxy coating.
  - **NSF listed for all environments.**
  - **Continuous Temperature:** Super Erecta Pro Shelves can be used continuously within a range of -20/120° F (-29/49° C) with intermittent exposure to 200° F (93° C).
- NOTE:** Not suitable for cart wash applications.



**Actual Dimensions:** Width: Add 1/4" (6mm) to nominal size.  
Length: Subtract 1/4" (6mm) from nominal size.

**Note:** Polymer Shelf mats are designed to fit Super Erecta Pro shelves and cannot be retrofitted to Super Erecta wire shelves.

**Replacement Split Sleeves**  
**Model No. 9985** Bag of four sets.

## Standard Shelves

- Part number includes shelf with removable polymer shelf mats and one bag of split sleeves

Nominal Width/Length (in.) (mm)	Approx. Pkd. Wt. (lbs.) (kg)	Model No. Super Erecta Pro Metroseal 3
18x24	457x610 6.0 2.7	PR1824NK3
18x30	457x760 7.8 3.5	PR1830NK3
18x36	457x914 9.5 4.2	PR1836NK3
18x42	457x1060 11.3 5.0	PR1842NK3
18x48	457x1219 13.0 5.8	PR1848NK3
18x54	457x1372 14.8 6.6	PR1854NK3
18x60	457x1524 16.5 7.4	PR1860NK3
18x72	457x1829 19.8 8.8	PR1872NK3
21x24	530x610 8.0 3.6	PR2124NK3
21x30	530x760 9.5 4.2	PR2130NK3
21x36	530x914 11.3 5.0	PR2136NK3
21x42	530x1060 12.5 5.6	PR2142NK3
21x48	530x1219 14.3 6.4	PR2148NK3
21x54	530x1372 16.5 7.4	PR2154NK3
21x60	530x1524 18.3 8.1	PR2160NK3
21x72	530x1829 21.5 9.6	PR2172NK3
24x24	610x610 9.5 4.2	PR2424NK3
24x30	610x760 11.3 5.0	PR2430NK3
24x36	610x914 13.0 5.8	PR2436NK3
24x42	610x1060 14.0 6.3	PR2442NK3
24x48	610x1219 15.5 6.9	PR2448NK3
24x54	610x1372 18.3 8.1	PR2454NK3
24x60	610x1524 20.0 8.9	PR2460NK3
24x72	610x1829 23.3 10.4	PR2472NK3

## SiteSelect Posts

Stationary post height includes leveling bolt.

**NOTE:** Special length posts are available. Consult your Metro representative.

## STATIONARY

Actual Height (in.)	(mm)	Approx. Pkd. Wt. (lbs.) (kg)	Model No. Metroseal 3	Model No. Stainless
14 1/2	370	1.0 0.5	13PK3	13PS
34 1/2	875	2.0 0.9	33PK3	33PS
54 9/16	1385	3.0 1.4	54PK3	54PS
62 9/16	1590	3.5 1.6	63PK3	63PS
—	—	—	—	—
74 5/8	1895	4.0 1.8	74PK3	74PS
86 5/8	2200	5.0 2.3	86PK3	86PS

## MOBILE (For use with stem casters)

Actual Height (in.)	(mm)	Approx. Pkd. Wt. (lbs.) (kg)	Model No. Metroseal 3	Model No. Stainless
13 3/4	349	1.0 0.5	13UPK3	13UPS
33 3/4	857	2.0 0.9	33UPK3	33UPS
53 13/16	1366	3.0 1.4	54UPK3	54UPS
61 13/16	1570	3.5 1.6	63UPK3	63UPS
69 3/4	1772	3.8 1.7	70UPK3	—
73 7/8	1876	4.0 1.8	74UPK3	74UPS
85 7/8	2181	5.0 2.3	86UPK3	86UPS

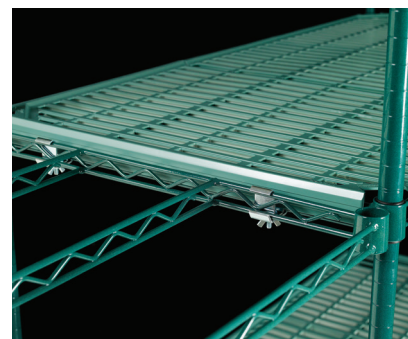
## KITS (Four shelves and four split posts ship in one carton)

Nominal Width/Length (in.) (mm)	Height (lbs.) (kg)	Approx. Pkd. Wt. (lbs.) (kg)	Model No.
18x36 457x914	74-5/8 1895	58.0 26.3	EZPR1836NK3-4
18x48 457x1219	74-5/8 1895	73.0 33.1	EZPR1848NK3-4
24x36 610x914	74-5/8 1895	72.0 32.6	EZPR2436NK3-4
24x48 610x1219	74-5/8 1895	83.0 37.6	EZPR2448NK3-4

**“S” Hook:** Used to “add on” one or multiple Super Erecta Pro shelving units while eliminating the cost of two posts per unit. Can be used to join units end-to-end, back-to-back, at right angles, etc. Two “S” hooks are required for each shelf. **Model No. Q9995Z**

## Notes about “add-on” units.

- Add-on (Adjacent) units must be configured entirely of one style of shelf. (Example: Adjacent unit may be configured entirely of Super Erecta Pro OR entirely of Super Erecta Wire/Super Adjustable shelves.)
- To connect an adjacent Super Erecta or Super Adjustable Super Erecta wire shelving unit to a Super Erecta Pro unit using S-hooks, the adjacent unit must use S-hook model number Q9995Z.
- A mixed shelving unit having a combination of Super Erecta Pro, Super Erecta wire, and Super Adjustable cannot be connected to another unit with “S” Hooks.



an Ali Group Company



The Spirit of Excellence



888.635.2080 | newenglandlab.com