

## STEEL CASEWORK HANDLE & HINGE OPTIONS

### Door/Drawer Pulls

\*Available at an additional charge

There are several different styles of door/drawer handles that are offered to suit specific customer requirements. Please use the option numbers below to specify the handle of your choice.



**OPTION 60**  
4" Black Nylon Pull



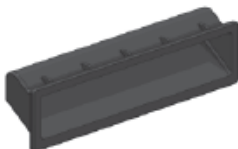
**\*OPTION 61**  
4" Stainless Steel Wire Pull  
**OPTION 68**  
4" Aluminum Wire Pull



**OPTION 62 - Standard**  
4" Brushed Aluminum Pull



**OPTION 63**  
4" Chrome Pull



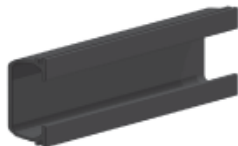
**OPTION 64**  
4" Black Flush ABS Pull



**OPTION 65**  
4" Flush Aluminum Pull  
For Sliding Doors



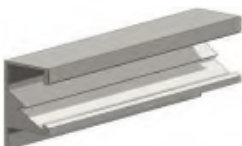
**OPTION 65**  
4" Flush Aluminum Pull  
For Doors and Drawers



**OPTION 66**  
4" Black Flush PVC Pull  
For Sliding Doors



**OPTION 66**  
4" Black Flush PVC Pull  
For Doors and Drawers



**\*OPTION 67**  
Flush Full Width Pull

### Door Hinges

\*Available at an additional charge

Mott cabinets come with durable 14 gauge five knuckle hinges. The hinges are available in black powder coat, chrome plated or stainless steel finishes. Please use the option numbers below to specify the hinge of your choice.



**OPTION 21 - Standard**  
Chrome Hinge  
**OPTION 22**  
Black Hinge  
**\*OPTION 23**  
Stainless Steel Hinge



**\*OPTION 20**  
Dull Chrome Overlay Hinge  
**\*OPTION 24**  
Stainless Steel Overlay Hinge